

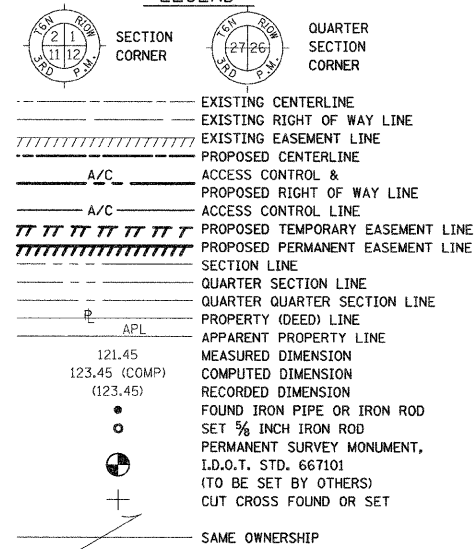
PART OF THE SW 1/4 OF SECTION 10 & NW 1/4 SECTION 15, T6N, R10W, OF THE 3RD PM, MADISON COUNTY, ILLINOIS

BEARINGS SHOWN HEREON ARE BASED ON SURVEY CONTROL DATA AS PROVIDED BY THE ILLINOIS DEPARTMENT OF TRANSPORTATION.

FAP ROUTE	SECTION	COUNTY	TOTAL SHEETS	SHEET NO.
310	60-16	MADISON	662	143

STA. 121+00 TO STA. 145+00

LEGEND



STAKING OF PROPOSED RIGHT OF WAY. SET 3/8 INCH METAL ROD WITH DIVISION OF HIGHWAY SURVEY MARKER TO MONUMENT THE POSITION SHOWN, IDENTIFIED BY INSCRIPTION DATA AND SURVEYORS REGISTRATION NUMBER.

STAKING OF PROPOSED RIGHT OF WAY IN CULTIVATED AREAS. SET 3/8 INCH METAL ROD WITH DIVISION OF HIGHWAY SURVEY MARKER 20 INCHES BELOW GROUND SURFACE TO MONUMENT THE POSITION SHOWN, IDENTIFIED BY INSCRIPTION DATA AND SURVEYORS REGISTRATION NUMBER.

STATE OF ILLINOIS )  
COUNTY OF ) SS

THIS IS TO CERTIFY THAT I, JEFFREY B. MEYER AN ILLINOIS PROFESSIONAL LAND SURVEYOR, HAS SURVEYED THE PLAT OF HIGHWAYS SHOWN HEREON IN SECTION 10, TOWNSHIP 6 NORTH, RANGE 10 WEST, OF THE THIRD PRINCIPAL MERIDIAN, MADISON COUNTY, THAT THE SURVEY IS TRUE AND COMPLETE AS SHOWN TO THE BEST OF MY KNOWLEDGE AND BELIEF, THAT THE PLAT CORRECTLY REPRESENTS SAID SURVEY, THAT ALL MONUMENTS FOUND AND ESTABLISHED ARE OF PERMANENT QUALITY AND OCCUPY THE POSITIONS SHOWN THEREON AND THAT THE MONUMENTS ARE SUFFICIENT TO ENABLE THE SURVEY TO BE RETRACED. MADE FOR THE DEPARTMENT OF TRANSPORTATION, STATE OF ILLINOIS.

DATED \_\_\_\_\_

JEFFREY B. MEYER, PLS No. 035-002977  
LICENSE EXPIRES NOVEMBER 30, 2010

PARCEL	STATION	POINT OF ACCESS	TYPE
8701102	LT. STA. 125+86 (FAP 310)		
8701103	LT. STA. 125+86 (FAP 310)		
8701115	LT. STA. 125+86 (FAP 310)		
8701116	LT. STA. 125+86 (FAP 310)		
8701041	LT. STA. 130+80 (FAP 310)		
8701101	LT. STA. 130+80 (FAP 310)		
8701099	RT. STA. 136+80 (FAP 310)		
8701100	LT. STA. 141+15 (FAP 310)		
8701045	LT. STA. 141+97 (FAP 310)		
8701045	LT. STA. 143+08 (FAP 310)		
8701045	LT. STA. 144+28 (FAP 310)		

THE EXISTING CORRECT ACCESS ENTRANCE AT THE DESIGNATED STATION SHOWN HEREON SHALL REMAIN IN EFFECT AND OPERATOR SHALL MAINTAIN AS SHOWN FOR THE PURPOSES OF THE ONE-SINGLE FAMILY RESIDENCE. EXISTING PROPOSED ACCESS TO A COMMERCIAL ENTERPRISE OTHER THAN FARMING, ON BOTH AND SO LONG AS SAID DISTANCE IS NOT USED FOR ACCESS TO A COMMERCIAL ENTERPRISE OTHER THAN FARMING.

140 E. TREMONT STREET  
P.O. BOX 180  
HILLSBORO, ILLINOIS 62340  
TEL: 618-939-9600 FAX: 618-939-9600

PROFESSIONAL DESIGN FIRM No. 184-000298

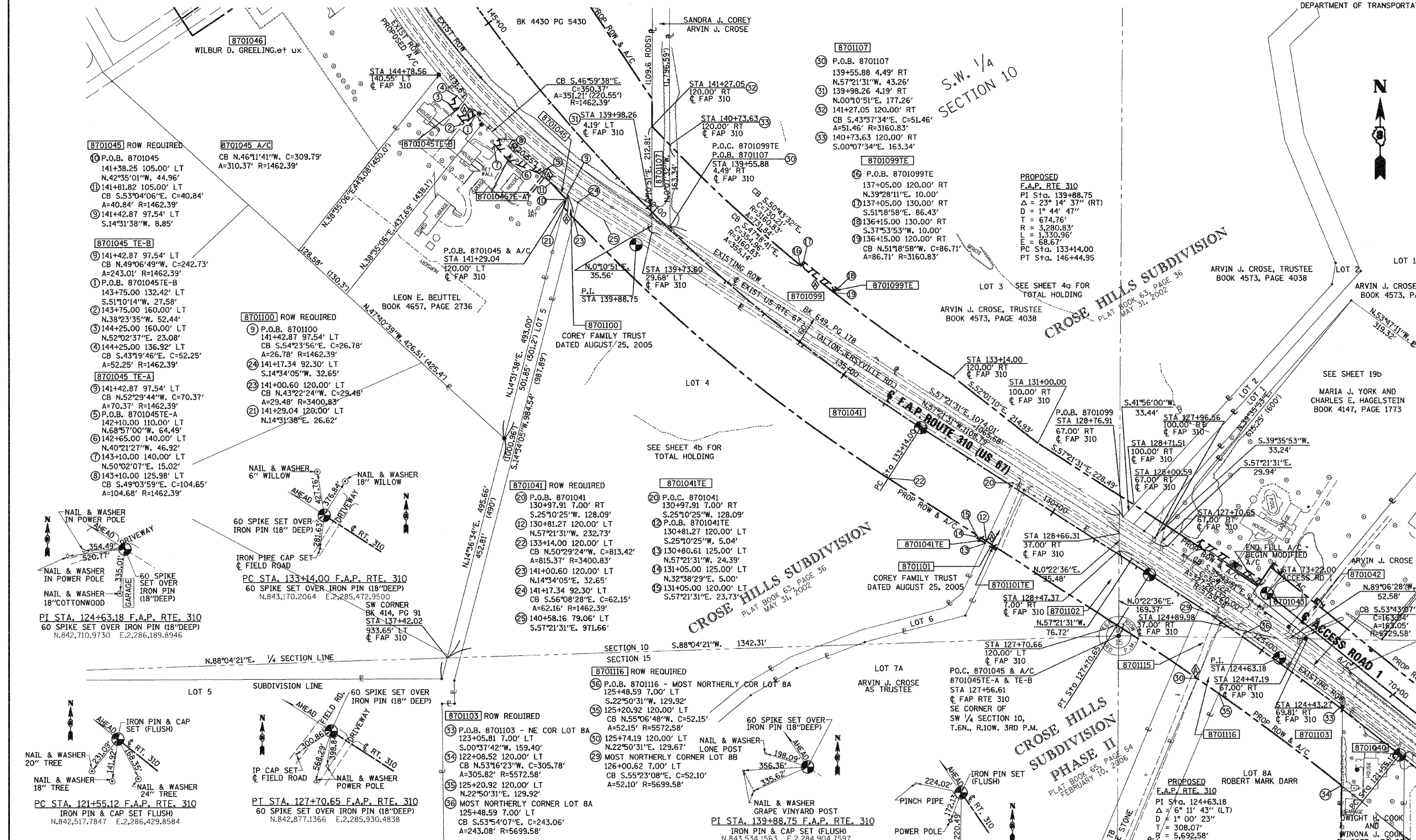
ILLINOIS DEPARTMENT OF TRANSPORTATION  
PLAT OF HIGHWAYS  
FAP ROUTE 310 (US 67)  
SECTION 60-16  
MADISON COUNTY  
JOB NO. R-98-001-97

STATION 121+00 TO STATION 145+00

SCALE: 1" = 100'

SHEET 20 OF 29

ILLINOIS DEPARTMENT OF TRANSPORTATION  
DIVISION OF HIGHWAYS/DISTRICT 8  
1102 EASTPORT PLAZA DRIVE  
COLLINSVILLE, ILLINOIS 62234-6198



PARCEL NO.	OWNER	TOTAL HOLDING	R.O.W. REQUIRED	PREVIOUSLY DEDICATED	REMAINDER	EASEMENTS		PERMANENT TAX NUMBER	PROPERTY ACQUIRED BY
						TEMP	TEMP		
8701041	JON H. COREY & SANDRA B. COREY, TRUSTEES OF THE COREY FAMILY TRUST DATED AUGUST 25TH, 2005 MA-1374	823,444 SF 18,9037 AC	105,199 SF 2.4100 AC	N/A	718,245 SF 16,4887 AC	TE 120 SF 0.0028 AC	ENTRANCE CONST	24-2-01-15-00-000-013 24-2-01-10-00-000-019	
8701045	LEON E. BEUTTEL MA-1402	199,187 SF 4,5727 AC	163 SF 0.0037 AC	N/A	199,024 SF 4,569 AC	TE-A 1,435 SF 0.0329 AC	ENTRANCE CONST	24-1-01-10-00-000-013 24-1-01-10-00-000-014	
8701099	ARVIN J. CROSE AS TRUSTEE MA-3148.0	1,811,909 SF 41,5957 AC	69,307 SF 1.5911 AC	N/A	1,742,602 SF 40,0046 AC	883 SF 0.0203 AC	ENTRANCE CONST	24-2-01-10-00-000-018	
8701100	JON H. COREY & SANDRA B. COREY, TRUSTEES OF THE COREY FAMILY TRUST DATED AUG 25TH, 2005 MA-3149.0	1,898,528 SF 43,5842 AC	740 SF 0.0170 AC	N/A	1,897,788 SF 43,5672 AC	N/A	N/A	24-2-01-15-00-000-014	
8701103	ROBERT MARK DARR MA-3152.0	775,688 SF 17,807 AC	34,842 SF 0.8000 AC	N/A	740,846 SF 17,007 AC	N/A	N/A	24-2-01-15-00-000-025	
8701107	ARVIN J. CROSE MA-3373.0	56,662 SF 1.3008 AC	6,124 SF 0.1406 AC	N/A	50,538 SF 1,1602 AC	N/A	N/A	24-2-01-10-00-000-017(p) 24-2-01-10-00-000-018(p)	
8701116	ROBERT MARK DARR MA-4018.0	94,535 SF 2.1702 AC	6,620 SF 0.1520 AC	N/A	87,915 SF 2,0182 AC	N/A	N/A	24-2-01-15-00-000-026	

COORDINATE TABLE

STATION	OFFSET	NORTH	EAST
141+81.82	105.00' LT	843,658.3996	2,284,734.4480
141+38.25	105.00' LT	843,625.2966	2,284,764.8710
141+42.87	97.54' LT	843,633.8631	2,284,767.0910
141+29.04	120.00' LT	843,608.0936	2,284,760.4130
133+14.00	120.00' LT	843,069.1613	2,285,408.2210
127+70.66	120.00' LT	842,776.0958	2,285,865.7480
121+08.52	120.00' LT	842,456.9009	2,286,313.7360
123+05.81	7.00' RT	842,616.2871	2,286,315.4840
123+27.99	37.00' RT	842,653.6434	2,286,315.8940
125+20.92	120.00' LT	842,639.7582	2,286,068.6550
125+48.59	7.00' RT	842,759.4906	2,286,119.0893

COORDINATES SHOWN HEREON ARE BASED ON SURVEY CONTROL DATA AS PROVIDED BY THE ILLINOIS DEPARTMENT OF TRANSPORTATION.

STATION	OFFSET	NORTH	EAST
124+89.98	37.00' RT	842,750.1227	2,286,184.4640
124+71.19	67.00' RT	842,749.3039	2,286,237.0370
127+70.65	67.00' RT	842,933.5551	2,285,966.6220
128+00.59	67.00' RT	842,949.7030	2,285,941.4120
127+96.56	100.00' RT	842,975.3193	2,285,962.6020
131+00.00	100.00' RT	843,138.9885	2,285,707.0860
133+14.00	120.00' RT	843,271.2565	2,285,537.6720
141+27.05	120.00' RT	843,770.7569	2,284,936.8910
139+98.26	4.19' LT	843,830.7518	2,284,547.7320

STATION	OFFSET	NORTH	EAST
139+73.60	29.68' LT	845,249.0026	2,283,542.7720
128+66.31	37.00' RT	842,959.8885	2,285,869.8910
128+47.37	7.00' RT	842,924.4111	2,285,869.6580
140+58.16	79.06' LT	843,583.6434	2,284,840.4790
122+08.52	120.00' LT	842,456.9009	2,286,313.7360
136+20.92	136.20' LT	842,755.0429	2,285,868.5443
130+81.27	120.00' LT	842,943.6302	2,285,604.1969
140+00.60	120.00' LT	843,733.5046	2,284,972.3987
141+00.60	120.00' LT	843,586.6677	2,284,780.6556