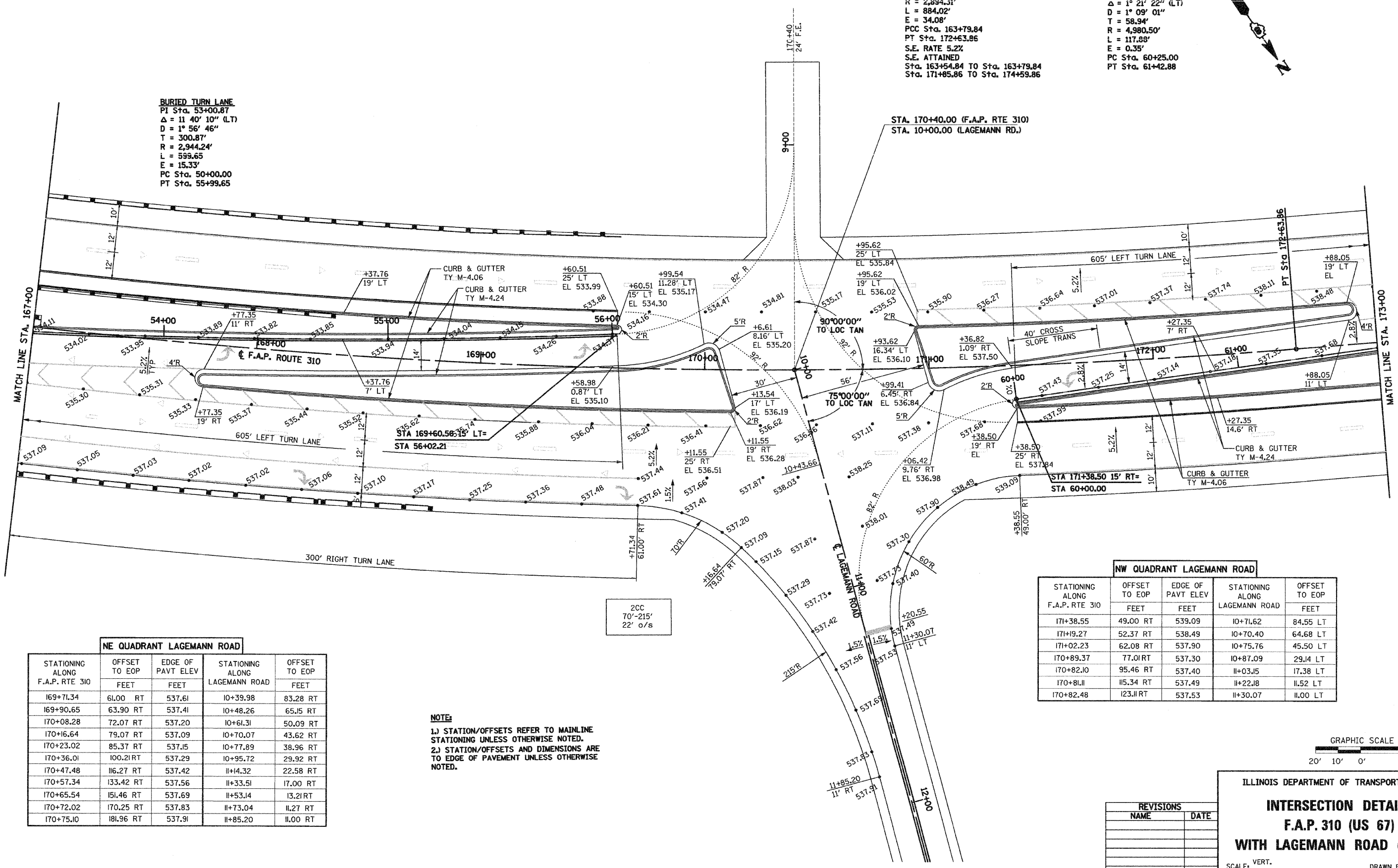


F.A. RTE.	SECTION	COUNTY	TOTAL SHEETS	SHEET NO.
310	60-16	MADISON	662	157
STA.		TO STA.		
FED. ROAD DIST. NO. 8		ILLINOIS FED. AID PROJECT		CONTRACT NO. 76311

PI Sta. 168+25.32
 $\Delta = 17^\circ 30' 00''$ (LT)
 $D = 1^\circ 58' 47''$
 $T = 445.48'$
 $R = 2,894.31'$
 $L = 884.02'$
 $E = 34.08'$
 PCC Sta. 163+79.84
 PT Sta. 172+63.86
 S.E. RATE 5.2%
 S.E. ATTAINED
 Sta. 163+54.84 TO Sta. 163+79.84
 Sta. 171+85.86 TO Sta. 174+59.86

BURIED TURN LANE
 PI Sta. 60+83.95
 $\Delta = 1^\circ 21' 22''$ (LT)
 $D = 1^\circ 09' 01''$
 $T = 58.94'$
 $R = 4,980.50'$
 $L = 117.88'$
 $E = 0.35'$
 PC Sta. 60+25.00
 PT Sta. 61+42.88

BURIED TURN LANE
 PI Sta. 53+00.87
 $\Delta = 11^\circ 40' 10''$ (LT)
 $D = 1^\circ 56' 46''$
 $T = 300.87'$
 $R = 2,944.24'$
 $L = 599.65'$
 $E = 15.33'$
 PC Sta. 50+00.00
 PT Sta. 55+99.65

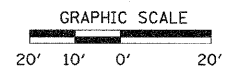


2CC
70'-215'
22' o/s

STATIONING ALONG F.A.P. RTE 310	OFFSET TO EOP FEET	EDGE OF PAVT ELEV FEET	STATIONING ALONG LAGEMANN ROAD	OFFSET TO EOP FEET
169+71.34	61.00 RT	537.61	10+39.98	83.28 RT
169+90.65	63.90 RT	537.41	10+48.26	65.15 RT
170+08.28	72.07 RT	537.20	10+61.31	50.09 RT
170+16.64	79.07 RT	537.09	10+70.07	43.62 RT
170+23.02	85.37 RT	537.15	10+77.89	38.96 RT
170+36.01	100.21 RT	537.29	10+95.72	29.92 RT
170+47.48	116.27 RT	537.42	11+14.32	22.58 RT
170+57.34	133.42 RT	537.56	11+33.51	17.00 RT
170+65.54	151.46 RT	537.69	11+53.14	13.21 RT
170+72.02	170.25 RT	537.83	11+73.04	11.27 RT
170+75.10	181.96 RT	537.91	11+85.20	11.00 RT

NOTE:
 1.) STATION/OFFSETS REFER TO MAINLINE STATIONING UNLESS OTHERWISE NOTED.
 2.) STATION/OFFSETS AND DIMENSIONS ARE TO EDGE OF PAVEMENT UNLESS OTHERWISE NOTED.

STATIONING ALONG F.A.P. RTE 310	OFFSET TO EOP FEET	EDGE OF PAVT ELEV FEET	STATIONING ALONG LAGEMANN ROAD	OFFSET TO EOP FEET
171+38.55	49.00 RT	539.09	10+71.62	84.55 LT
171+19.27	52.37 RT	538.49	10+70.40	64.68 LT
171+02.23	62.08 RT	537.90	10+75.76	45.50 LT
170+89.37	77.01 RT	537.30	10+87.09	29.14 LT
170+82.10	95.46 RT	537.40	11+03.15	17.38 LT
170+81.11	115.34 RT	537.49	11+22.18	11.52 LT
170+82.48	123.11 RT	537.53	11+30.07	11.00 LT



NAME	DATE

ILLINOIS DEPARTMENT OF TRANSPORTATION

INTERSECTION DETAILS

F.A.P. 310 (US 67)

WITH LAGEMANN ROAD (CH 36)

SCALE: VERT. HORIZ. DATE: 09-04-09

DRAWN BY: T.W.C. CHECKED BY: J.J.C.