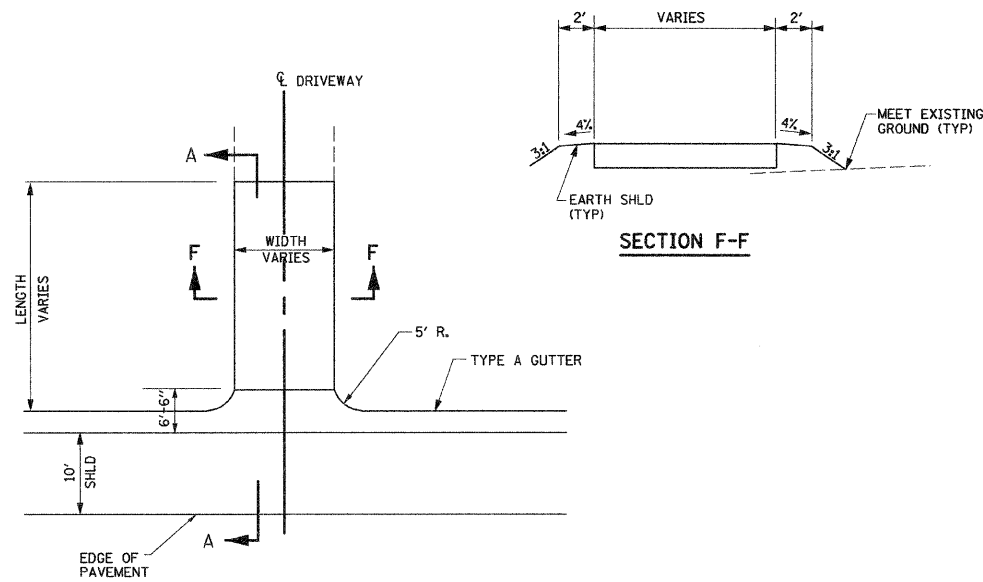
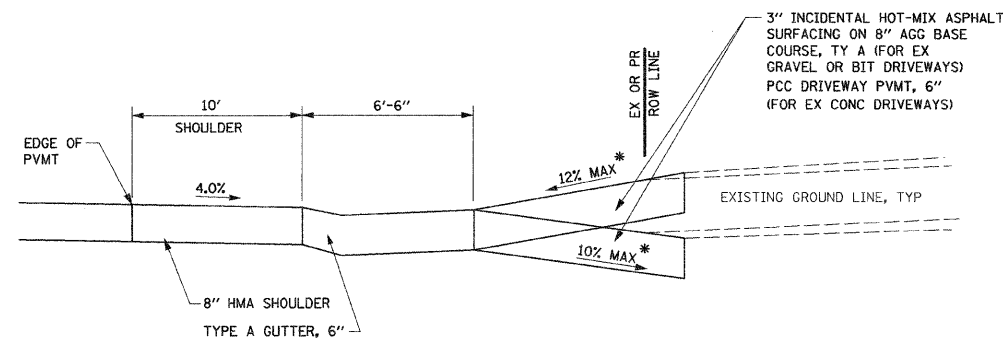


F.A.P. RTE.	SECTION	COUNTY	TOTAL SHEETS	SHEET NO.
310	60-16	MADISON	662	210
STA.		TO STA.		
FED. ROAD DIST. NO. 8 ILLINOIS FED. AID PROJECT				
CONTRACT NO. 76311				

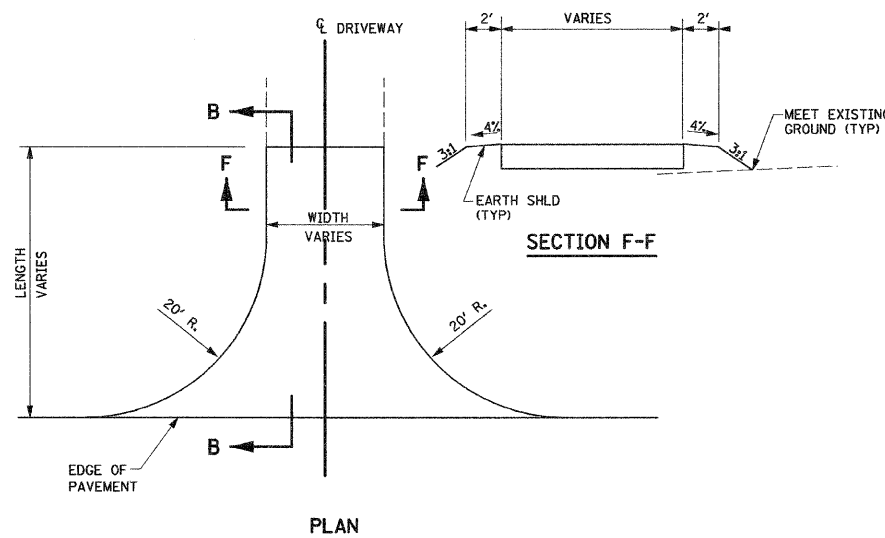


PLAN
PRIVATE ENTRANCE WITH TYPE A GUTTER

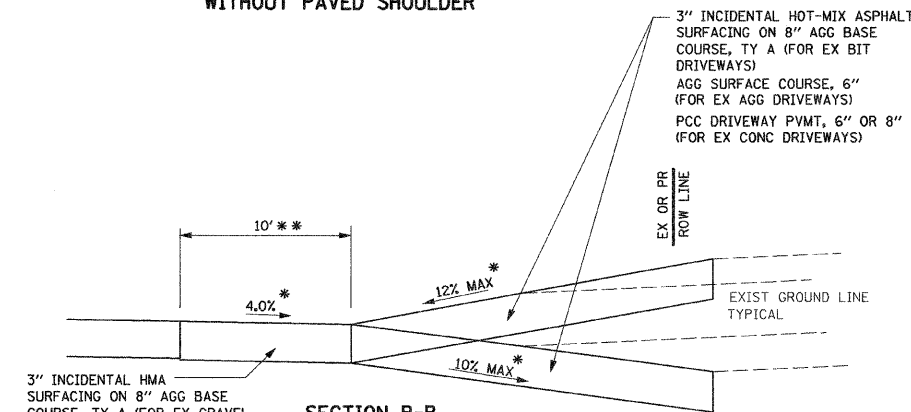


SECTION A-A

* SEE X-SECTIONS, ENTRANCE SCHEDULE AND PLAN VIEW FOR FURTHER DETAILS



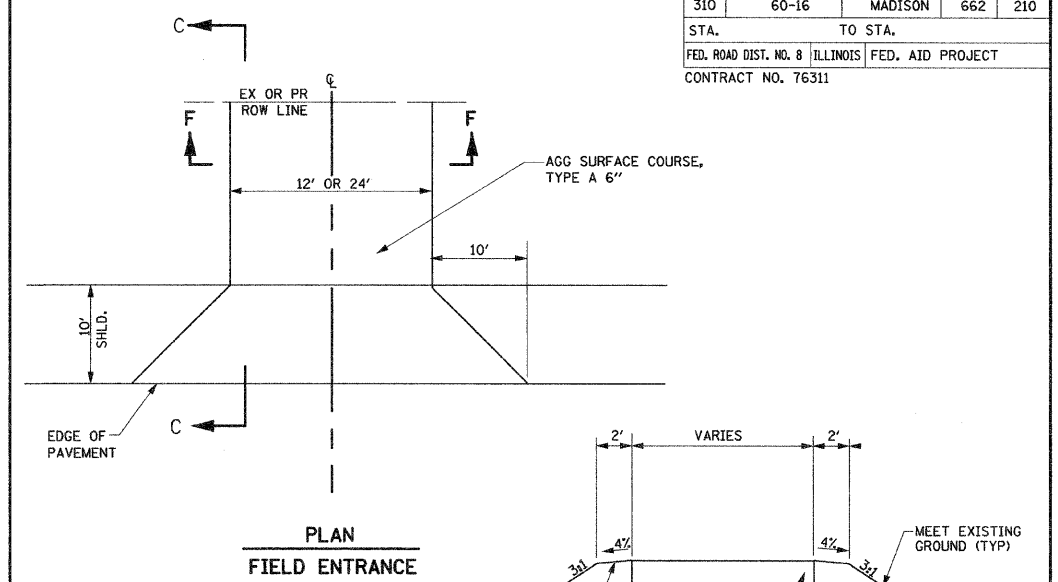
PLAN
PRIVATE ENTRANCE, SERVICE DRIVE OR COMMERCIAL ENTRANCE WITHOUT PAVED SHOULDER



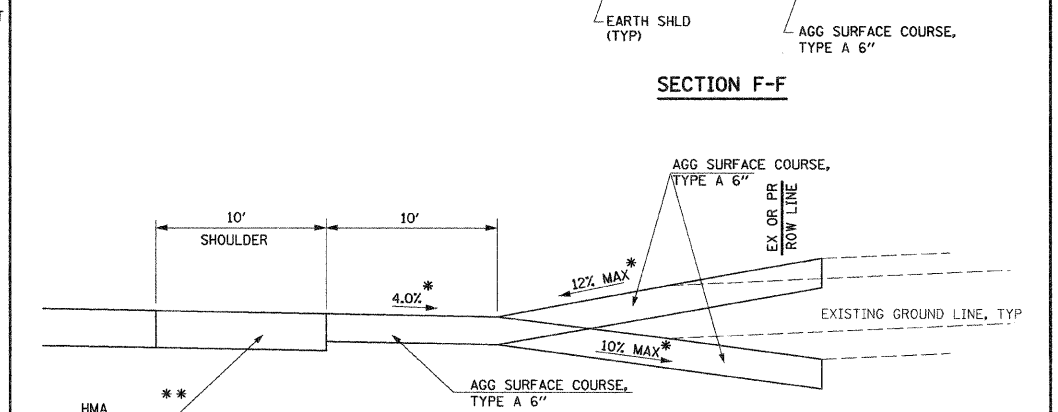
SECTION B-B

3" INCIDENTAL HMA SURFACING ON 8" AGG BASE COURSE, TY A (FOR EX GRAVEL OR BIT DRIVEWAYS)
PCC DRIVEWAY PVMT, 6" OR 8" (FOR EX CONC DRIVEWAYS)

* SEE X-SECTIONS, ENTRANCE SCHEDULE AND PLAN VIEW FOR FURTHER DETAILS
** (4') FOR ENTRANCES OFF OF LAGEMANN ROAD

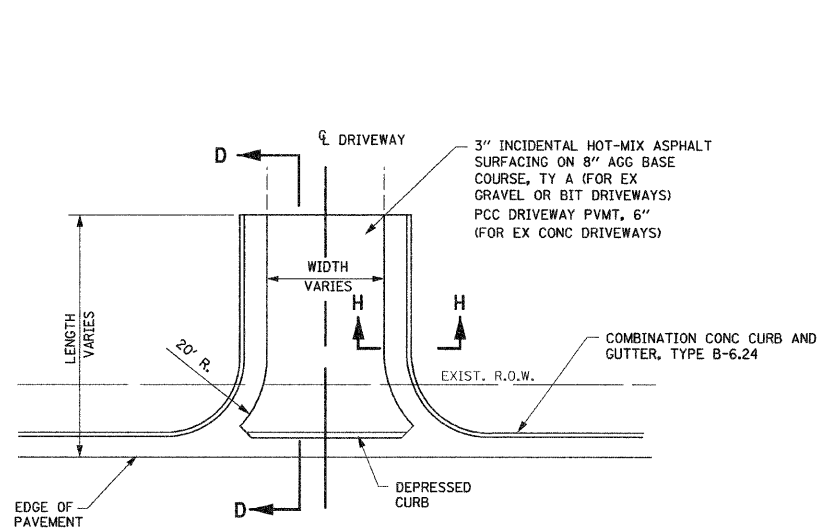


PLAN
FIELD ENTRANCE

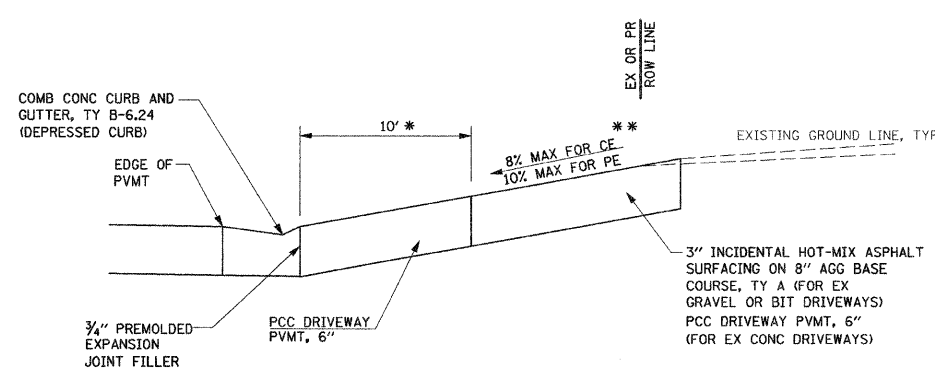


SECTION C-C

* SEE X-SECTIONS, ENTRANCE SCHEDULE AND PLAN VIEW FOR FURTHER DETAILS
** 3" INCIDENTAL HOT-MIX ASPHALT SURFACING ON 8" AGG BASE COURSE, TY A, FOR ENTRANCES WITHOUT PAVED SHOULDERS

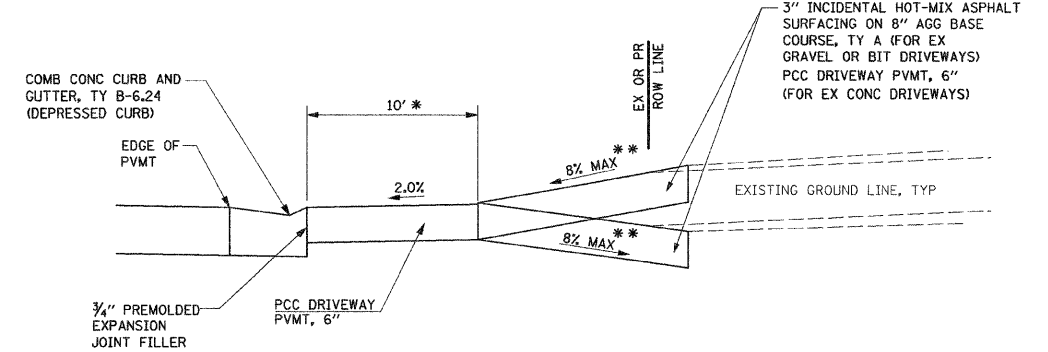


PLAN
ENTRANCE WITH CURB AND GUTTER



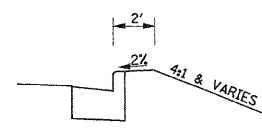
SECTION D-D

* FOR COMMERCIAL ENTRANCES WHERE THE EXIST OR PROP ROW LINE IS WITHIN 15' FROM THE BACK OF CURB AND THE ENTRANCE LENGTH IS LONGER THAN 15'. SEE CROSS SECTIONS FOR FURTHER DETAIL.
** SEE X-SECTIONS, ENTRANCE SCHEDULE AND PLAN VIEW FOR FURTHER DETAILS



SECTION D-D

* FOR COMMERCIAL ENTRANCES WHERE THE EXIST OR PROP ROW LINE IS GREATER THAN 15' FROM THE BACK OF CURB AND THE ENTRANCE LENGTH IS LONGER THAN 15', CONST THE PCC PAVEMENT FOR 10'. SEE CROSS SECTIONS FOR FURTHER DETAIL.
** SEE X-SECTIONS, ENTRANCE SCHEDULE AND PLAN VIEW FOR FURTHER DETAILS



SECTION H-H

REVISIONS	
NAME	DATE

ILLINOIS DEPARTMENT OF TRANSPORTATION

ENTRANCE DETAILS

SCALE: NO SCALE
DATE: 09-04-09

DRAWN BY: U.J.
CHECKED BY: J.J.C.