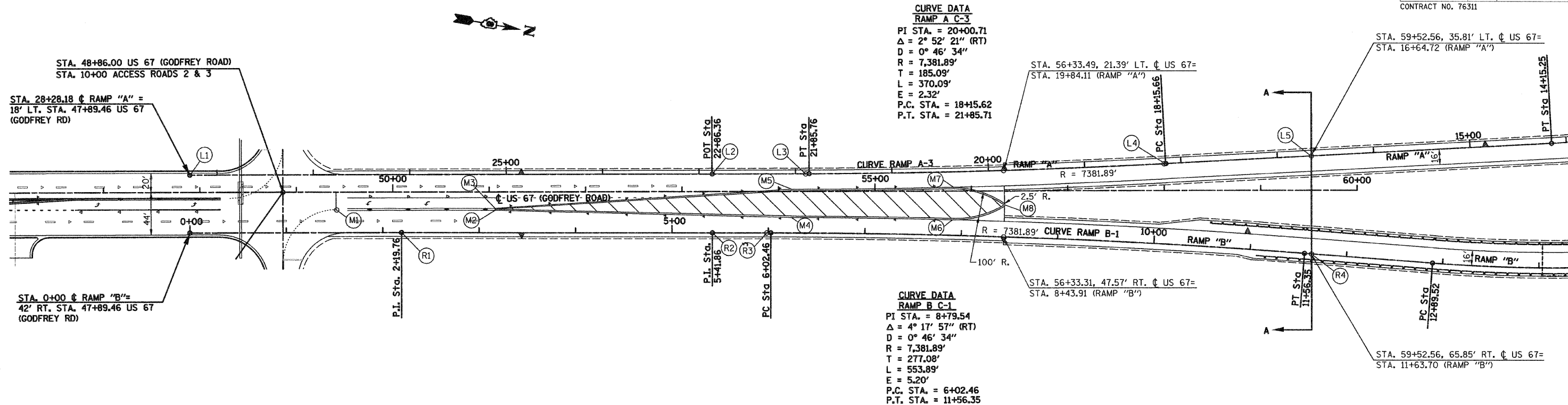


F.A. RTE.	SECTION	COUNTY	TOTAL SHEETS	SHEET NO.
310	60-16	MADISON	662	215

STA. TO STA.

FED. ROAD DIST. NO. ILLINOIS FED. AID PROJECT

CONTRACT NO. 76311



STA. 48+86.00 US 67 (GODFREY ROAD)
STA. 10+00 ACCESS ROADS 2 & 3

STA. 28+28.18 ϕ RAMP "A" =
18' LT. STA. 47+89.46 US 67
(GODFREY RD)

STA. 0+00 ϕ RAMP "B" =
42' RT. STA. 47+89.46 US 67
(GODFREY RD)

CURVE DATA
RAMP A C-3
PI STA. = 20+00.71
 Δ = 2° 52' 21" (RT)
D = 0° 46' 34"
R = 7,381.89'
T = 185.09'
L = 370.09'
E = 2.32'
P.C. STA. = 18+15.62
P.T. STA. = 21+85.71

CURVE DATA
RAMP B C-1
PI STA. = 8+79.54
 Δ = 4° 17' 57" (RT)
D = 0° 46' 34"
R = 7,381.89'
T = 277.08'
L = 553.89'
E = 5.20'
P.C. STA. = 6+02.46
P.T. STA. = 11+56.35

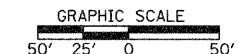
STA. 59+52.56, 35.81' LT. ϕ US 67 =
STA. 16+64.72 (RAMP "A")

STA. 56+33.49, 21.39' LT. ϕ US 67 =
STA. 19+84.11 (RAMP "A")

STA. 56+33.31, 47.57' RT. ϕ US 67 =
STA. 8+43.91 (RAMP "B")

STA. 59+52.56, 65.85' RT. ϕ US 67 =
STA. 11+63.70 (RAMP "B")

STATION	RIGHT OFFSET		LEFT OFFSET	
	PAVEMENT	MEDIAN	MEDIAN	PAVEMENT
L1	47+89.46			18.00'
M1	49+41.00		18.00'	
R1	50+09.22	42.00'		
M2	51+06.00		19.00'	
M3	51+06.00		17.00'	
L2,R2	53+31.32	42.76'		18.33'
R3	53+87.53	42.92'		
M4,M5	54+13.43		27.02'	2.44'
L3	54+28.08			18.43'
M6	55+80.39		29.87'	
M7	55+81.35			3.72'
M8	56+34.49		14.405'	
L4	58+00.75			28.07'
R4,L5	59+52.56	65.85'		35.81'



REVISIONS	
NAME	DATE

ILLINOIS DEPARTMENT OF TRANSPORTATION
CONSTRUCTION DETAILS
RAMP "A" AND RAMP "B"
WITH US 67 (GODFREY RD)

SCALE: VERT. 1"=50'
HORIZ. 1"=50'
DATE: 09-04-09

DRAWN BY: T.W.C.
CHECKED BY: J.J.C.