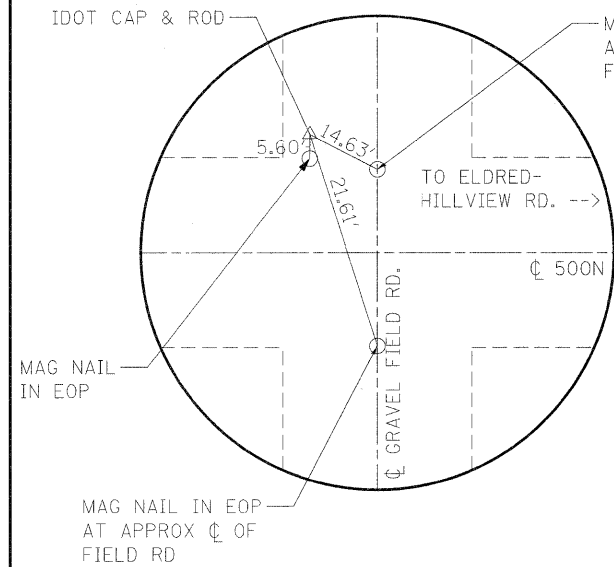




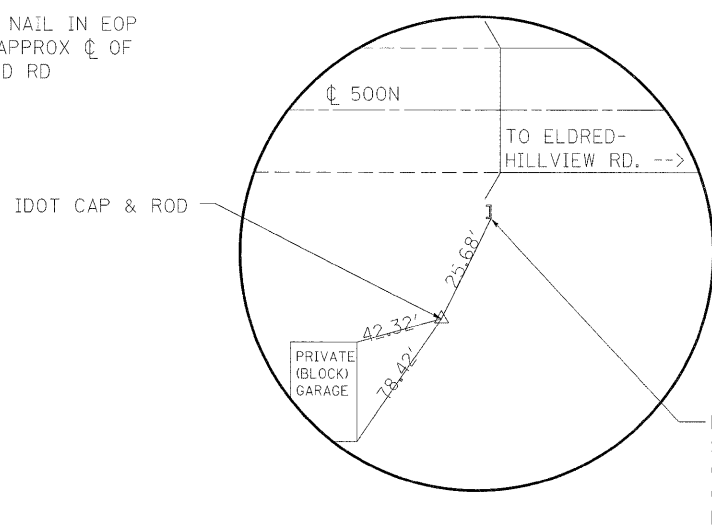
BM 1: RR SPIKE SET IN POWER POLE ON EAST SIDE OF ELDRED-HILLVIEW RD, ± 489 FT SOUTH OF ϕ 975N.
STATION ± 118+70, 49' LT, ELEVATION 447.65.

BM 2: RR SPIKE SET IN POWER POLE ON EAST SIDE OF ELDRED-HILLVIEW RD, 151.03' SOUTHEAST OF CONTROL POINT 6.
STATION ± 130+71, 51' LT, ELEVATION 456.44



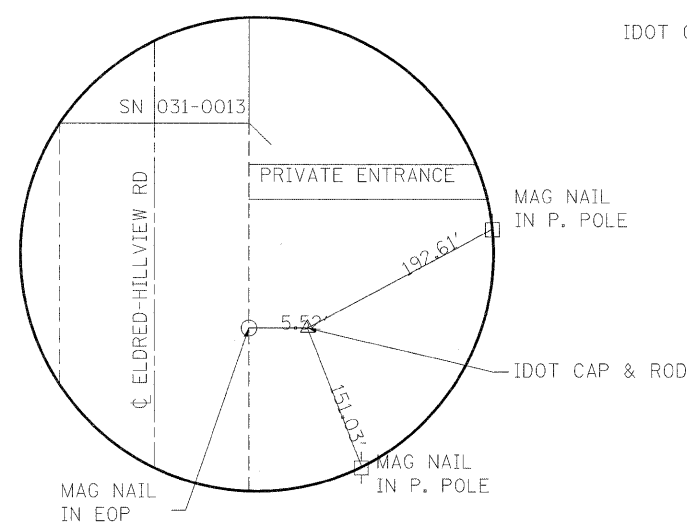
CONTROL POINT 4

N. 935,070.5234 E. 183,945.1523



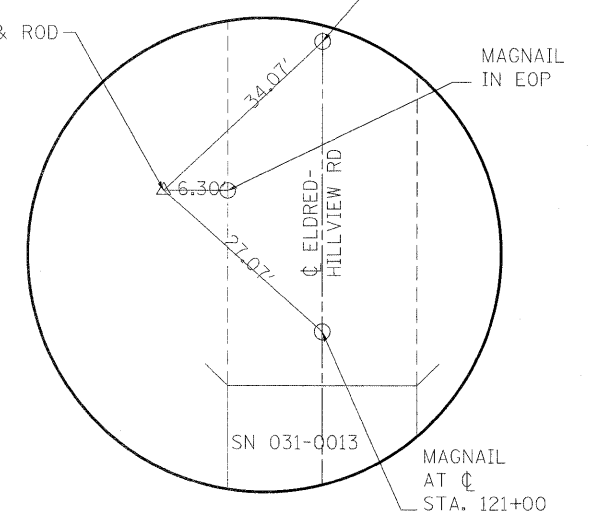
CONTROL POINT 5

N. 935,012.4042 E. 185,227.9200



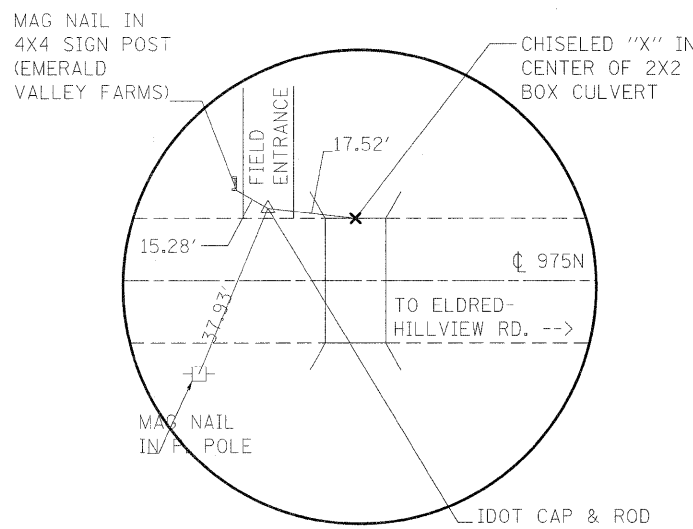
CONTROL POINT 6

STATION 129+22.99
OFFSET 16.68' LT
N. 942,824.2542 E. 186,719.2120



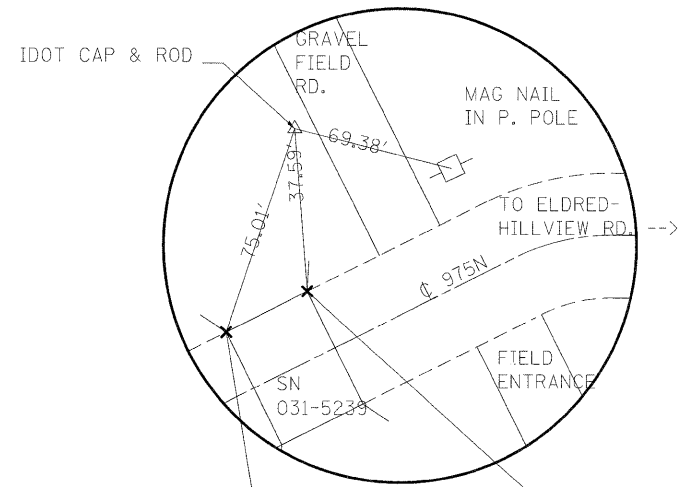
CONTROL POINT 7

STATION 120+79.23
OFFSET 17.43' RT
N. 943,668.5823 E. 186,704.7989



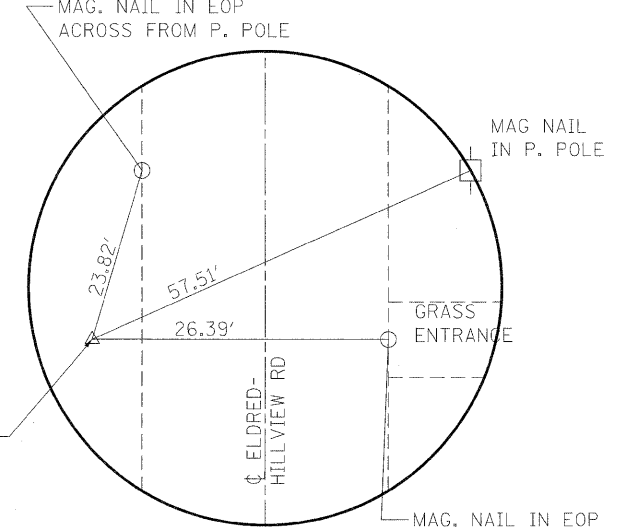
CONTROL POINT 8

N. 944,445.4414 E. 182,693.0072



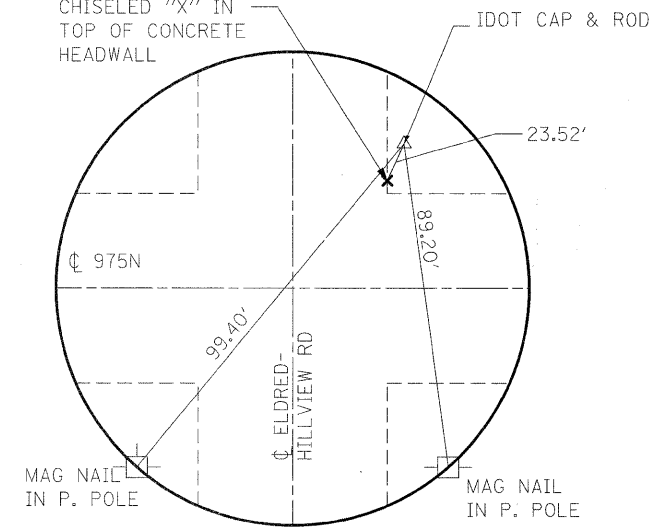
CONTROL POINT 9

N. 944,395.3026 E. 180,558.6762



CONTROL POINT 10

N. 942,076.6377 E. 186,669.1611



CONTROL POINT 11

STATION 113+31.82
OFFSET 22.36' LT
N. 944,414.8543 E. 186,762.0260

NOTES:
NOT TO SCALE.
ALL TIES ARE PULLED DIRECT, UNLESS OTHERWISE NOTED.

FILE NAME =	USER NAME = tharp1	DESIGNED -	REVISED -	STATE OF ILLINOIS DEPARTMENT OF TRANSPORTATION	TIES AND BENCHMARKS SN 031-0013(E) 0041(P), SECTION 401-2BR		F.A.S. RTE.	SECTION	COUNTY	TOTAL SHEETS	SHEET NO.	
ct:\pw\work\p1\dot\tharp1\dms52692\087610-sht-ATB.dgn		DRAWN -	REVISED -		SCALE:	SHEET NO. 1 OF 2 SHEETS	STA.	739	1BR, 1-2BR, 401-2BR	GREENE	150	6
PLOT SCALE = 50.000' / IN.		CHECKED -	REVISED -		TO STA.			CONTRACT NO. 76410				
PLOT DATE = 3/25/2010		DATE -	REVISED -		FED. ROAD DIST. NO. ILLINOIS FED. AID PROJECT							