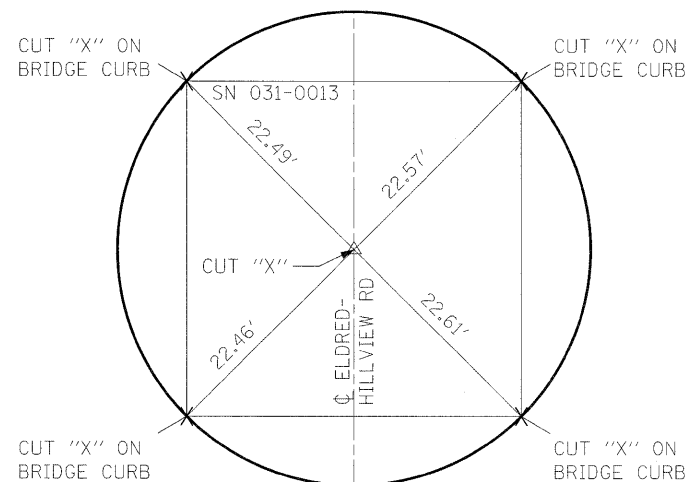


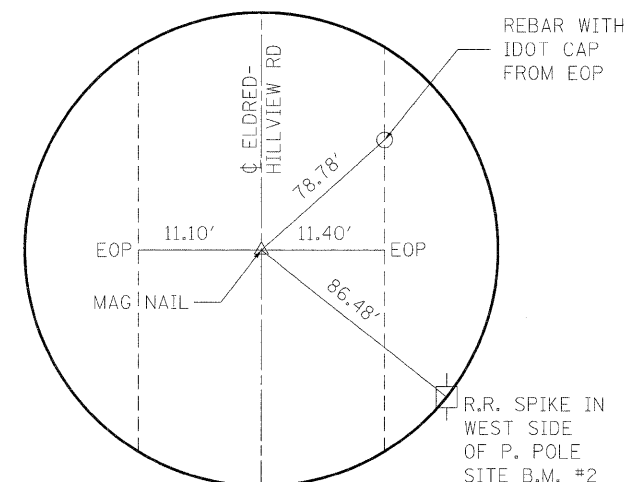
EXISTING ALIGNMENT- STA 113+49.97

N. 944,397.2395 E. 186,739.2507



EXISTING ALIGNMENT- STA 124+00

N. 943,347.4909 E. 186,714.7409



EXISTING ALIGNMENT- STA 130+99.97

N. 942,647.7094 E. 186,698.4023

ABOVE MEASUREMENTS AT STA 113+49.97 ARE HORIZ. EDM DISTANCES

NOTES:
NOT TO SCALE.
ALL TIES ARE PULLED DIRECT, UNLESS OTHERWISE NOTED.

FILE NAME =	USER NAME = tharpr1	DESIGNED -	REVISED -	STATE OF ILLINOIS DEPARTMENT OF TRANSPORTATION	TIES AND BENCHMARKS SN 031-0013(E) 0041(P), SECTION 401-2BR	F.A.S. RTE.	SECTION	COUNTY	TOTAL SHEETS	SHEET NO.	
ci:\pvt\work\p\idot\tharpr1\dms52692\0876	10-shr-ATB.dgn	DRAWN -	REVISED -			739	1BR, 1-2BR, 401-2BR	GREENE	150	7	
	PLOT SCALE = 50.000' / IN.	CHECKED -	REVISED -			CONTRACT NO. 76410					
	PLOT DATE = 3/25/2010	DATE -	REVISED -			SCALE:	SHEET NO. 2 OF 2 SHEETS	STA.	TO STA.	FED. ROAD DIST. NO.	ILLINOIS FED. AID PROJECT