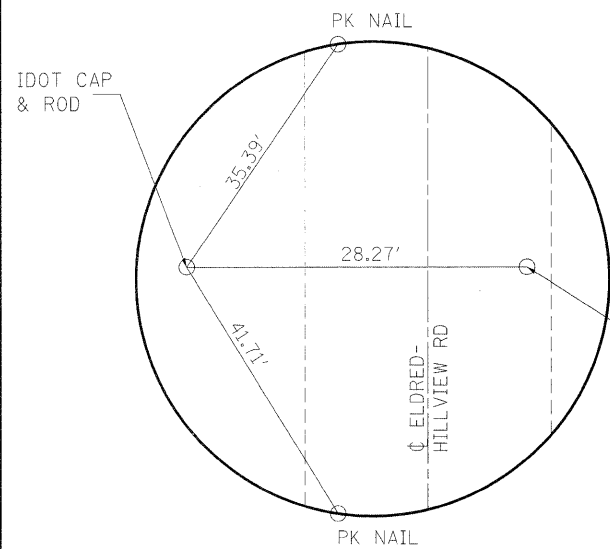


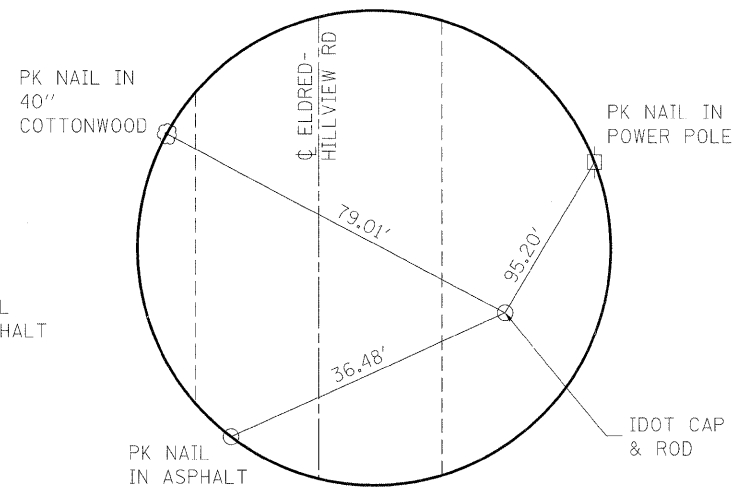


BM 1: RR SPIKE IN POWER POLE
 STATION 240+89, OFFSET 40' RIGHT, ELEVATION 440.16
 BM 2: CHISELED "□" ON THE TOP NW CORNER OF THE BRIDGE RAIL.
 STATION 237+16, OFFSET 19' LEFT, ELEVATION 446.78
 BM 3: RR SPIKE IN POWER POLE
 STATION 232+02, OFFSET 36' RIGHT, ELEVATION 441.90



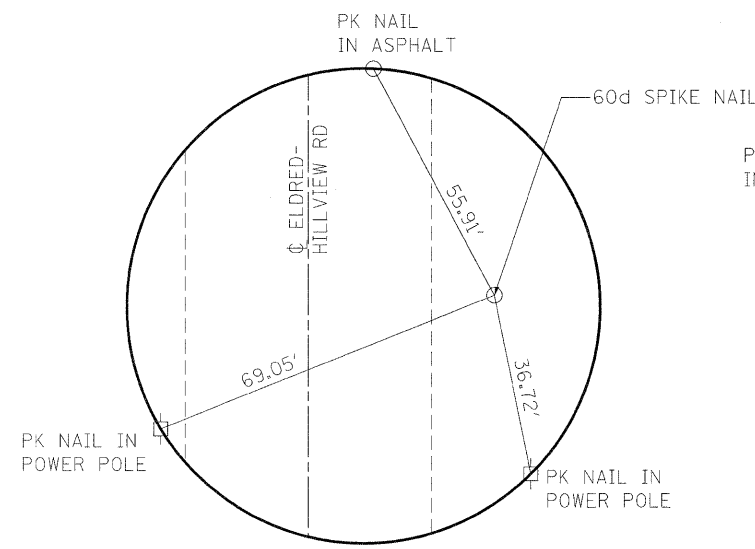
CONTROL POINT 1

STATION 239+26.13
 OFFSET 17.68' LT
 N. 100,000.000 E. 100,000.000



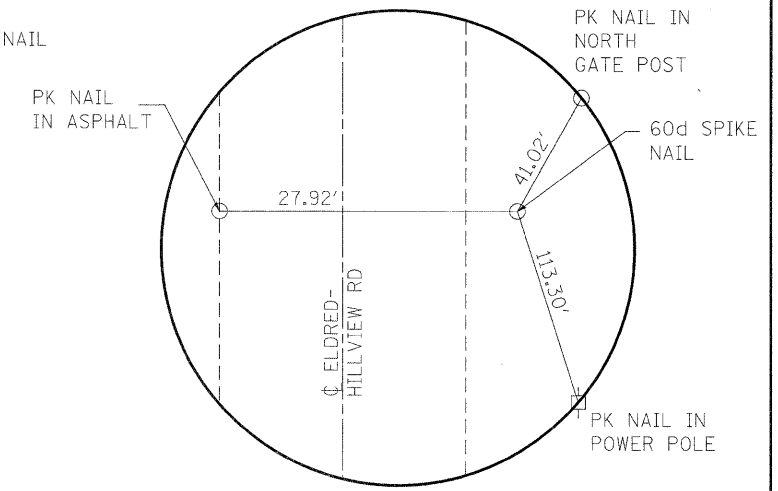
CONTROL POINT 2

STATION 234+04.05
 OFFSET 16.68' RT
 N. 99,546.886 E. 100,261.605



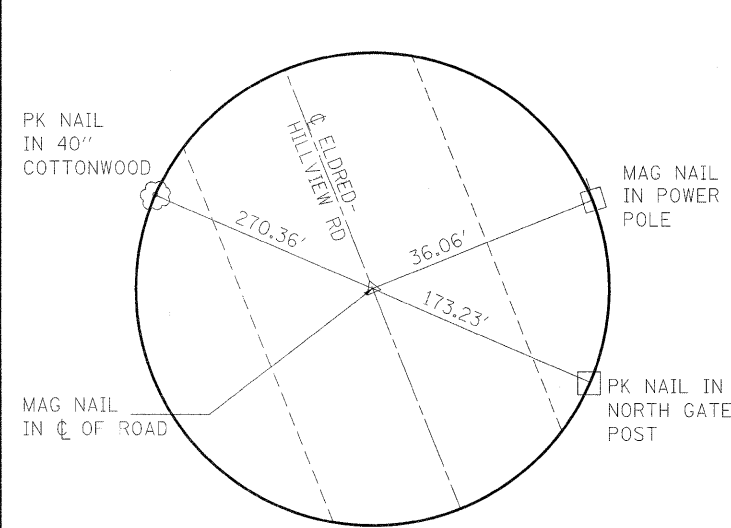
CONTROL POINT 3

STATION 244+06.17
 OFFSET 13.25' RT
 N. 100,444.259 E. 99,815.537



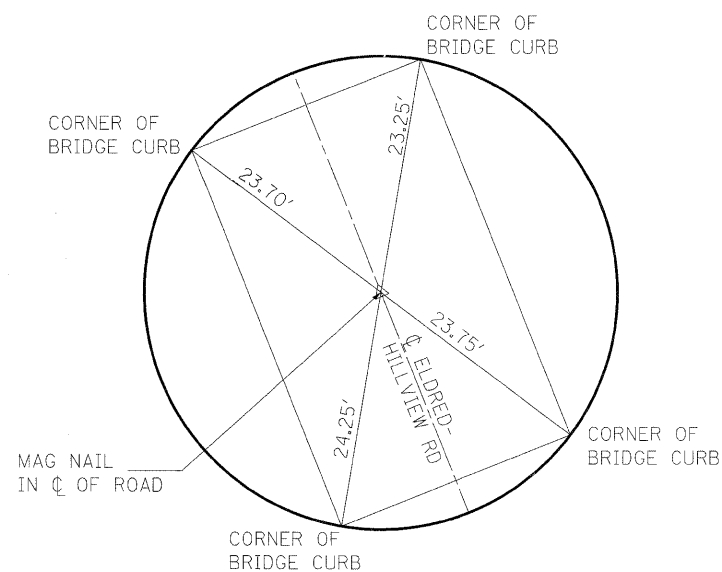
CONTROL POINT 4

STATION 230+17.43
 OFFSET 17.10' RT
 N. 99,200.225 E. 100,433.174



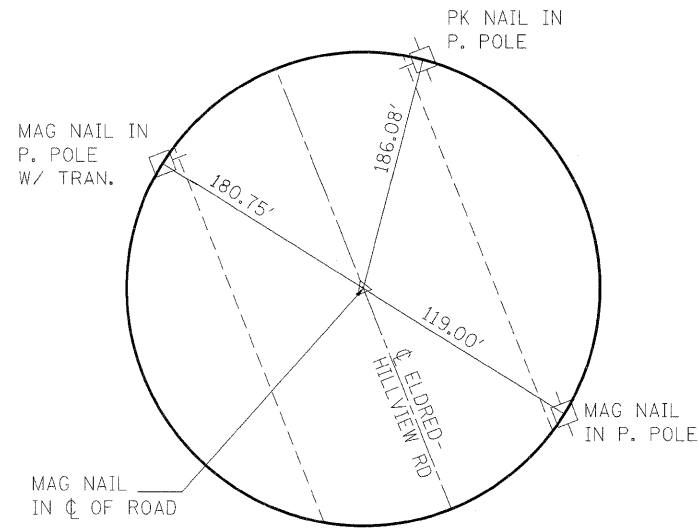
EXISTING ALIGNMENT - STA 232+00

N. 99,356.4863 E. 100,336.8423



EXISTING ALIGNMENT - STA 237+00

N. 99,804.9844 E. 100,115.8132



EXISTING ALIGNMENT - STA 242+00

N. 100,253.4746 E. 99,894.7880

NOTES:
 NOT TO SCALE.
 ALL TIES ARE PULLED DIRECT, UNLESS OTHERWISE NOTED.

FILE NAME =	USER NAME = tharpr1	DESIGNED -	REVISED -	STATE OF ILLINOIS DEPARTMENT OF TRANSPORTATION	TIES AND BENCHMARKS SN 031-0010(E) 0039(P), SECTION 1BR		F.A.S. RTE.	SECTION	COUNTY	TOTAL SHEETS	SHEET NO.
ci:\pw_work\pwidot\tharpr1\dms52692\0876	18-shr-ATB.dgn	DRAWN -	REVISED -		739	1BR, 1-2BR, 401-2BR	GREENE	150	9		
PLOT SCALE = 50.000' / IN.		CHECKED -	REVISED -		CONTRACT NO. 76410						
PLOT DATE = 3/25/2010		DATE -	REVISED -		SCALE:	SHEET NO. 1 OF 1 SHEETS	STA.	TO STA.	FED. ROAD DIST. NO.	ILLINOIS FED. AID PROJECT	