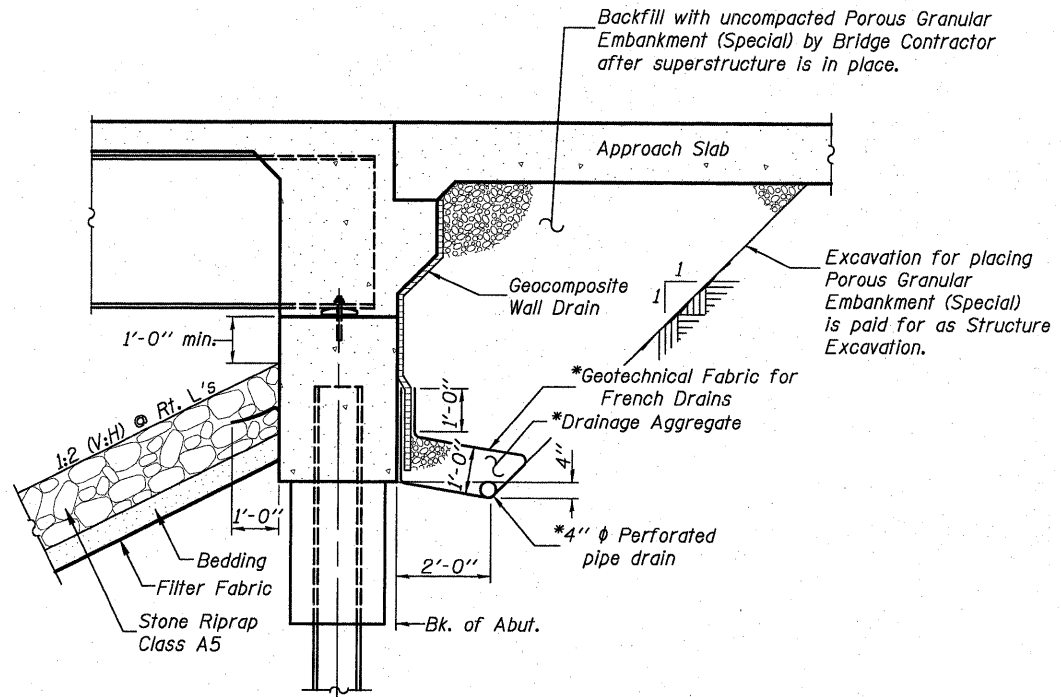


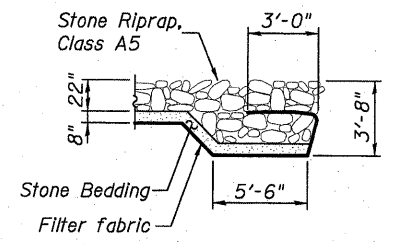
**STATE OF ILLINOIS  
DEPARTMENT OF TRANSPORTATION**



**SECTION THRU INTEGRAL ABUTMENT**  
(Horiz. dim. @ Rt. L's)

\*Included in the cost of Pipe Underdrains for Structures.

**Note:**  
All drainage system components shall extend to 2'-0" from the end of each wingwall except an outlet pipe shall extend until intersecting with the side slopes. The pipes shall drain into concrete headwalls. (See Article 601.05 of the Standard Specifications and Highway Standard 60110).



**STONE RIPRAP FLANK DETAIL**

**TOTAL BILL OF MATERIAL**

ITEM	UNIT	SUPER	SUB	TOTAL
Porous Granular Embankment (Special)	Cu. Yd.	—	130	130
Stone Riprap, Class A5	Sq. Yd.	—	766	766
Filter Fabric	Sq. Yd.	—	766	766
Removal of Existing Structures No. 3	Each	—	—	1
Structure Excavation	Cu. Yd.	—	219	219
Concrete Structures	Cu. Yd.	—	56.2	56.2
Concrete Superstructure	Cu. Yd.	204.8	—	204.8
Bridge Deck Grooving	Sq. Yd.	422	—	422
Concrete Encasement	Cu. Yd.	—	6.6	6.6
** Protective Coat	Sq. Yd.	552	—	552
Furnishing and Erecting Structural Steel	L. Sum	0.46	—	0.46
Stud Shear Connectors	Each	846	—	846
*** Reinforcement Bars, Epoxy Coated	Pound	46,800	6,820	53,620
*** Bar Splicers	Each	56	—	56
Furnishing Steel Piles HP 14x73	Foot	—	580	580
Driving Piles	Foot	—	580	580
Test Pile Steel HP 14x73	Each	—	2	2
Name Plates	Each	1	—	1
Anchor Bolts, 1"	Each	—	24	24
Geocomposite Wall Drain	Sq. Yd.	—	63	63
Pipe Underdrains for Structures 4"	Foot	—	140	140

\*\* Quantity includes top of concrete surface of bridge deck and approach slabs end to end and the top and inside vertical faces of the parapets and curbs.  
\*\*\* Reinforcement and Bar Splicer quantities for Bridge Approach Slabs and Footings are included in Superstructure quantities.

**GENERAL NOTES**

- Fasteners shall be AASHTO M164 Type 1, mechanically galvanized bolts. Bolts 3/4 in. φ, holes 5/16 in. φ, unless otherwise noted.
- Calculated weight of Structural Steel = 4,130 lbs. (M270, Grade 36)  
85,100 lbs. (M270, Grade 50)
- No field welding is permitted except as specified in the contract documents.
- Reinforcement bars shall conform to the requirements of ASTM A 706 Gr 60. See Special Provisions.
- Reinforcement bars designated (E) shall be epoxy coated.
- If the Contractor elects to use cantilever forming brackets on the exterior beams or girders, the brackets shall be placed at the same locations as required for the hardwood blocks in Article 503.06(b) of the Standard Specifications. If additional cantilever forming brackets are required, hardwood blocking shall be wedged between the exterior and first interior beam at each of these additional bracket locations.
- The Inorganic Zinc Rich Primer / Acrylic / Acrylic Paint System shall be used for shop and field painting of new structural steel except where otherwise noted. The color of the final finish coat for all interior steel surfaces shall be Gray, Munsell No. 5B 7/1. The color of the final finish coat for the exterior and bottom flange of the fascia beams shall be Gray, Munsell No. 5B 7/1. See Special Provision for "Cleaning and Painting New Metal Structures".
- Layout of slope protection system may be varied in the field to suit ground conditions as directed by the Engineer.
- The existing structural steel coating contains lead. The Contractor shall take appropriate precautions to deal with the presence of lead on this project.
- The Contractor shall drive test piles to 110% of the nominal required bearing specified in production locations at substructures specified or approved by the Engineer before ordering the remainder of piles.
- Excavation behind existing abutment walls shall be performed to balance front and back soil pressure before removing the existing superstructure.
- Slipforming of the parapets is not allowed.

DESIGNED	B.G.H.
CHECKED	L.D.G.
DRAWN	K.H.L.
CHECKED	B.G.H.

**GENERAL DATA**

SHEET NO. 2	F.A.S. RTE.	SECTION	COUNTY	TOTAL SHEETS	SHEET NO.
	739	401-2BR	GREENE	150	35
21 SHEETS	S.N. 031-0041		CONTRACT NO. 76410		
FED. ROAD DIST. NO.		ILLINOIS	FED. AID PROJECT		