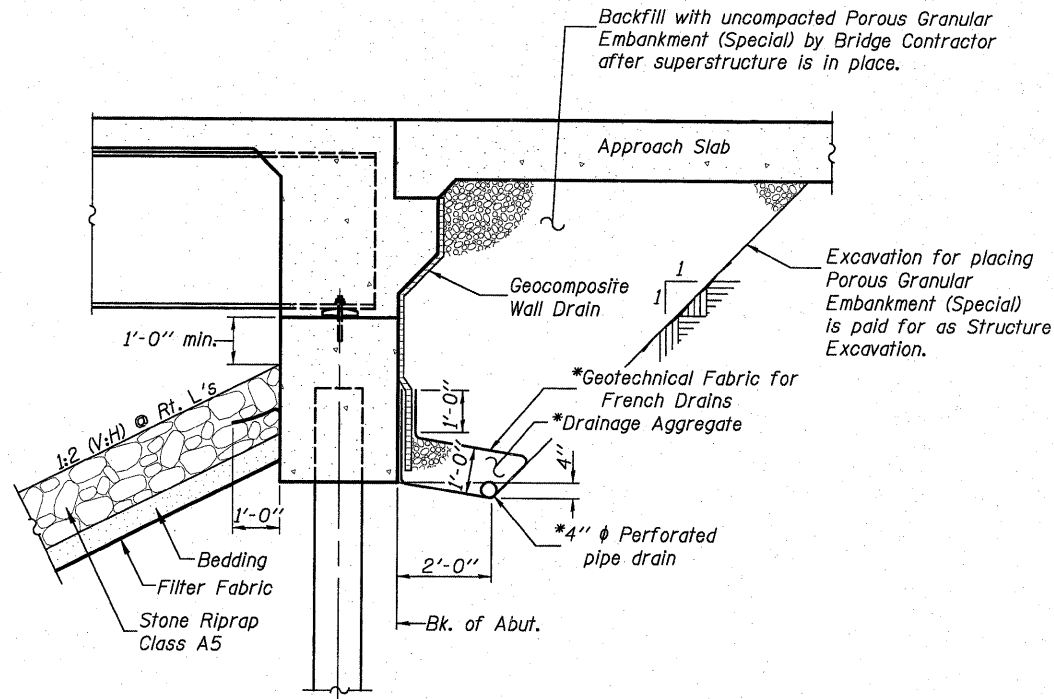


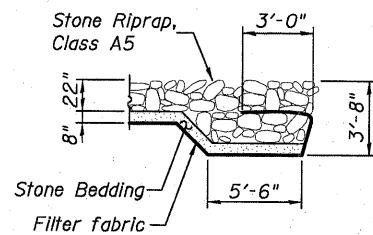
STATE OF ILLINOIS
DEPARTMENT OF TRANSPORTATION



SECTION THRU INTEGRAL ABUTMENT
(Horiz. dim. @ Rt. L's)

*Included in the cost of Pipe Underdrains for Structures.

Note:
All drainage system components shall extend to 2'-0" from the end of each wingwall except an outlet pipe shall extend until intersecting with the side slopes. The pipes shall drain into concrete headwalls. (See Article 601.05 of the Standard Specifications and Highway Standard 601101).



STONE RIPRAP FLANK DETAIL

TOTAL BILL OF MATERIAL

ITEM	UNIT	SUPER	SUB	TOTAL
Porous Granular Embankment (Special)	Cu. Yd.	---	138	138
Stone Riprap, Class A5	Sq. Yd.	---	661	661
Filter Fabric	Sq. Yd.	---	661	661
Removal of Existing Structures No. 1	Each	---	---	1
Structure Excavation	Cu. Yd.	---	236	236
Concrete Structures	Cu. Yd.	---	61.7	61.7
Concrete Superstructure	Cu. Yd.	208.9	---	208.9
Bridge Deck Grooving	Sq. Yd.	436	---	436
** Protective Coat	Sq. Yd.	554	---	554
Furnishing and Erecting Structural Steel	L. Sum	0.34	---	0.34
Stud Shear Connectors	Each	1,098	---	1,098
*** Reinforcement Bars, Epoxy Coated	Pound	47,250	7,180	54,430
*** Bar Splicers	Each	529	---	529
Furnishing Metal Shell Piles 14"x0.312"	Foot	---	693	693
Driving Piles	Foot	---	693	693
Test Pile Metal Shell	Each	---	1	1
Temporary Sheet Piling	Sq. Ft.	---	2,160	2,160
Name Plates	Each	1	---	1
Anchor Bolts, 1"	Each	---	24	24
Geocomposite Wall Drain	Sq. Yd.	---	79	79
Pipe Underdrains for Structures 4"	Foot	---	135	135

** Quantity includes top of concrete surface of bridge deck and approach slabs end to end and the top and inside vertical faces of the parapets and curbs.

*** Reinforcement and Bar Splicer quantities for Bridge Approach Slabs and Footings are included in Superstructure quantities.

GENERAL NOTES

- Fasteners shall be AASHTO M164 Type 1, mechanically galvanized bolts. Bolts 3/4 in. ϕ , holes 5/16 in. ϕ , unless otherwise noted.
- Calculated weight of Structural Steel = 3,100 lbs. (M270, Grade 36)
63,400 lbs. (M270, Grade 50)
- No field welding is permitted except as specified in the contract documents.
- Reinforcement bars shall conform to the requirements of ASTM A 706 Gr 60. See Special Provisions.
- Reinforcement bars designated (E) shall be epoxy coated.
- The existing structural steel coating contains lead. The Contractor shall take appropriate precautions to deal with the presence of lead on this project.
- The Inorganic Zinc Rich Primer / Acrylic / Acrylic Paint System shall be used for shop and field painting of new structural steel except where otherwise noted. The color of the final finish coat for all interior steel surfaces shall be Gray, Munsell No. 5B 7/1. The color of the final finish coat for the exterior and bottom flange of the fascia beams shall be Gray, Munsell No. 5B 7/1. See Special Provision for "Cleaning and Painting New Metal Structures".
- Layout of slope protection system may be varied in the field to suit ground conditions as directed by the Engineer.
- The Contractor shall drive test piles to 110% of the nominal required bearing specified in production locations at substructures specified or approved by the Engineer before ordering the remainder of piles.
- Slipforming of the parapets is not allowed.

DESIGNED	B.G.H.
CHECKED	L.D.G.
DRAWN	K.H.L.
CHECKED	B.G.H.

GENERAL DATA

SHEET NO. 2	F.A.S. RTE.	SECTION	COUNTY	TOTAL SHEETS	SHEET NO.
	739	1BR	GREENE	150	123
23 SHEETS	S.N. 031-0039		CONTRACT NO. 76410		
FED. ROAD DIST. NO. - ILLINOIS FED. AID PROJECT					