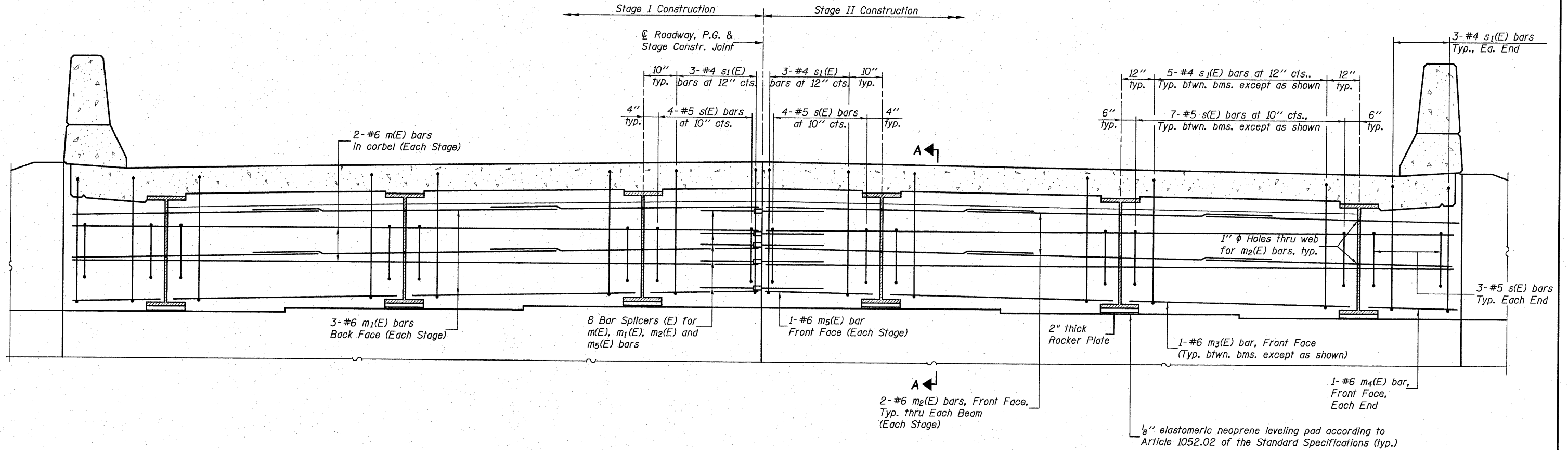


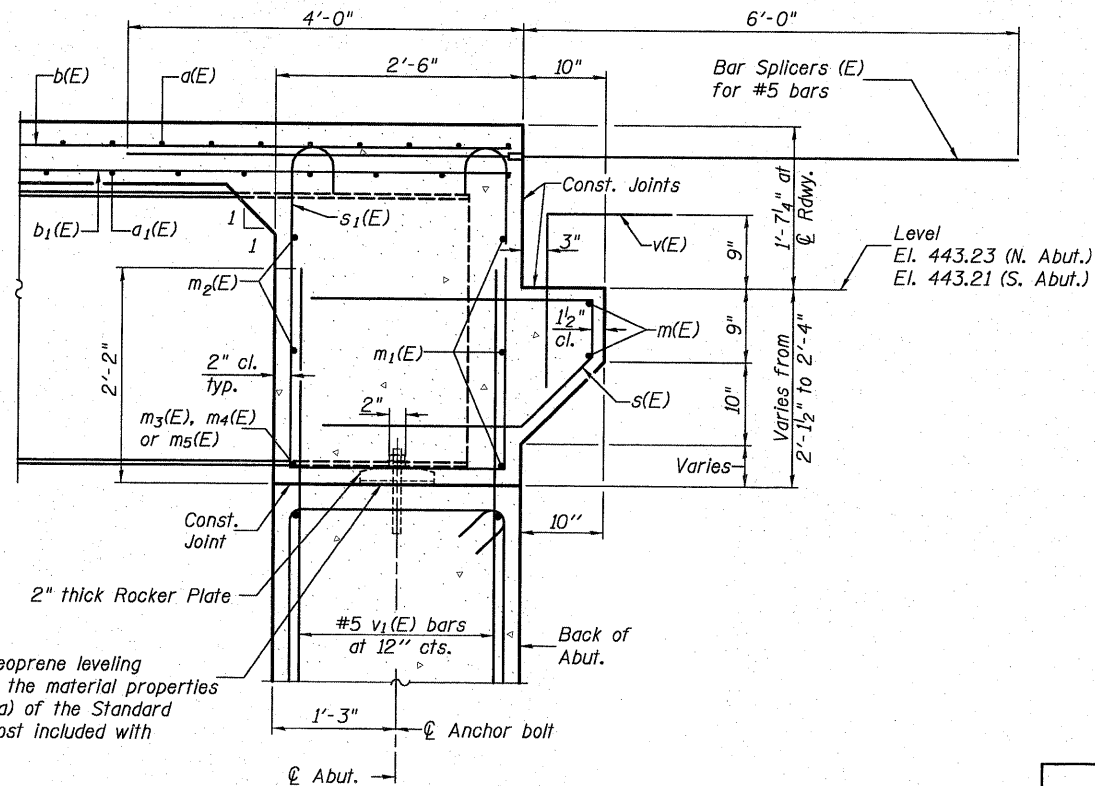
STATE OF ILLINOIS  
DEPARTMENT OF TRANSPORTATION



**DIAPHRAGM ELEVATION AT SOUTH ABUTMENT**  
(Looking South)

**Notes:**  
Reinforcement bars in diaphragm are billed with superstructure on sheet 11 of 23.  
Concrete in diaphragm is included with Concrete Superstructure on sheet 11 of 23.  
For details of bars s(E) & s<sub>1</sub>(E) see sheet 11 of 23.  
The s(E) and s<sub>1</sub>(E) bars shall be placed parallel to the beams. Spacing for these bars shall be at right angles to the beams.

**MIN. BAR LAP**  
#6 bar = 2'-9"



$\frac{1}{8}$ " elastomeric neoprene leveling pad according to the material properties of Art. 1052.02(a) of the Standard Specifications. Cost included with Structural Steel.

**SECTION A-A**

DESIGNED	B.G.H.
CHECKED	L.D.G.
DRAWN	K.H.L.
CHECKED	B.G.H.

**INTEGRAL ABUTMENT DIAPHRAGM DETAILS**

SHEET NO. 12	F.A.S. RTE.	SECTION	COUNTY	TOTAL SHEETS	SHEET NO.
	739	1BR	GREENE	150	133
23 SHEETS	S.N. 031-0039		CONTRACT NO. 76410		
FED. ROAD DIST. NO. ILLINOIS FED. AID PROJECT					