

0120039-74310-14-AP07.DGN DEC. 1, 2009

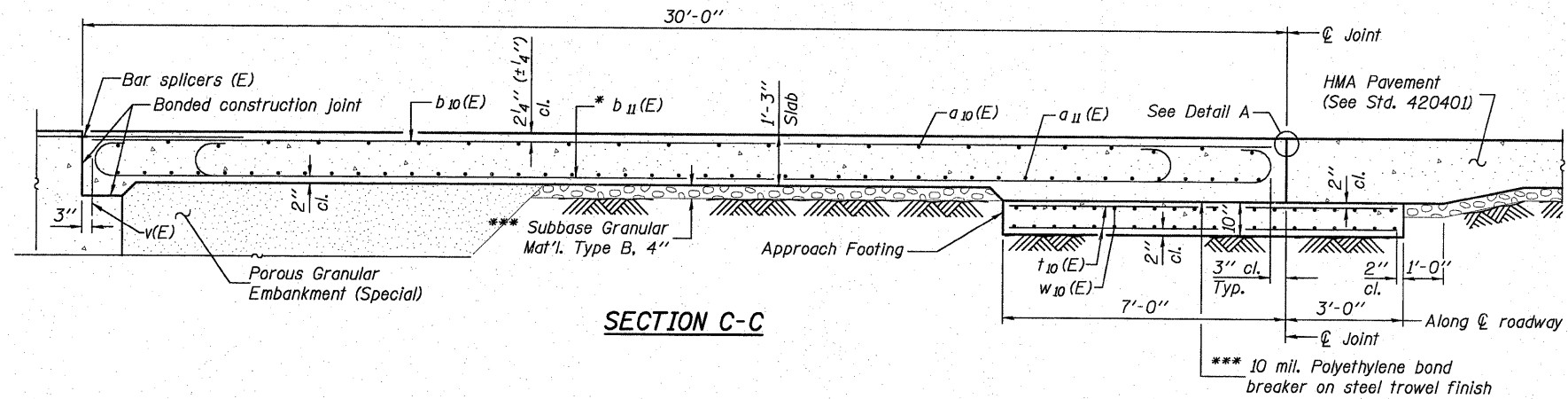
**STATE OF ILLINOIS
DEPARTMENT OF TRANSPORTATION**

Notes:

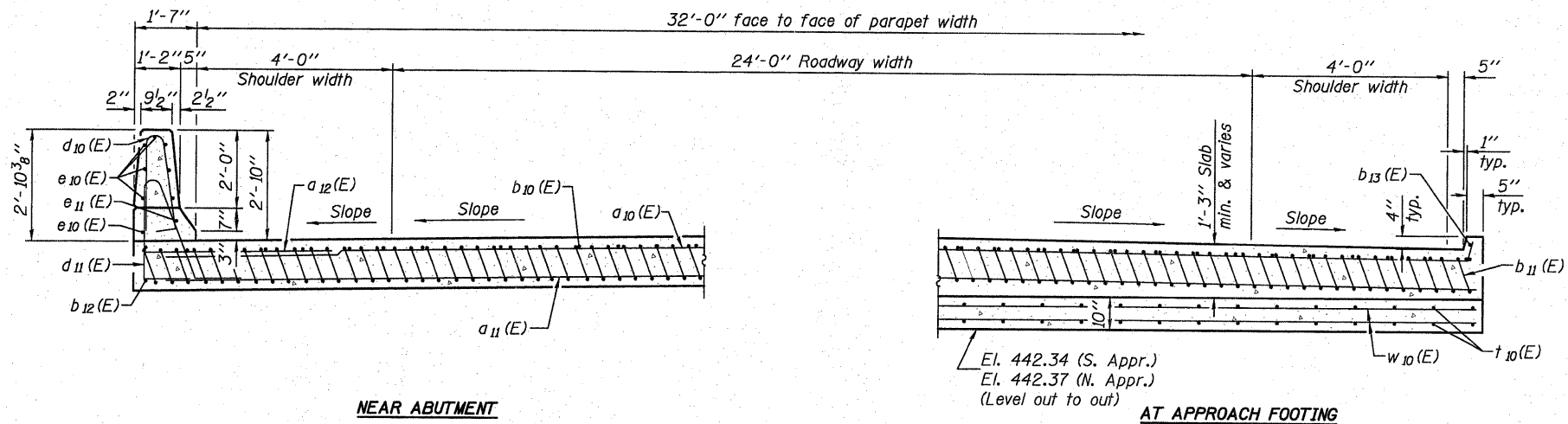
See sheet 13 of 23 for Detail A and View B-B.
Approach slab and parapet concrete shall be paid for as Concrete Superstructure.
Approach footing concrete shall be paid for as Concrete Structures.
Reinforcement shall be paid for as Reinforcement Bars, Epoxy Coated.
For v(E) bar details, see sheet 11 of 23.
The approach footing maximum applied service bearing pressure (Qmax) = 2.0 ksf.
For bar splicer details, see sheet 19 of 23.
Cost of excavation for approach footing included with Concrete Structures.
For Porous Granular Embankment (Special) and drainage treatment details, see sheet 2 of 23.

* Tilt #9 b₁₁(E) bars as required to maintain clearance.

*** Cost included with Concrete Superstructure.



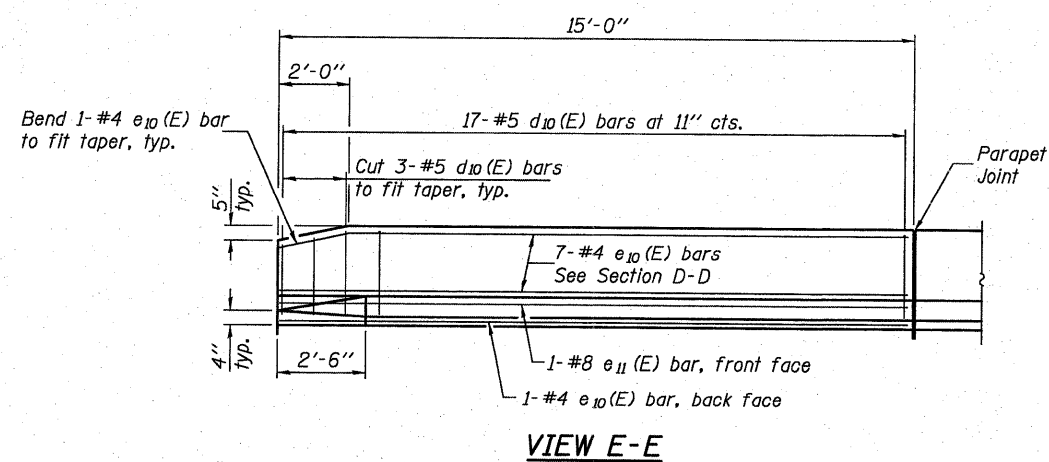
SECTION C-C



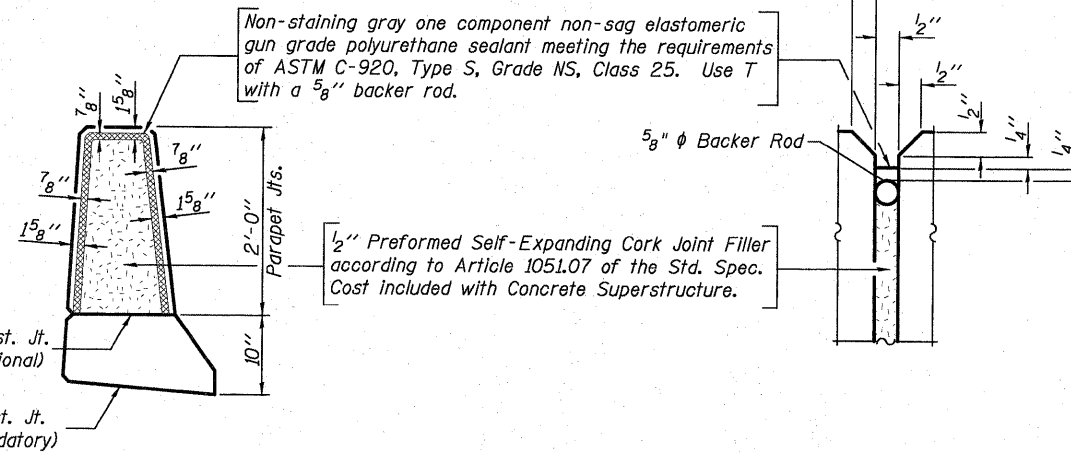
NEAR ABUTMENT

AT APPROACH FOOTING

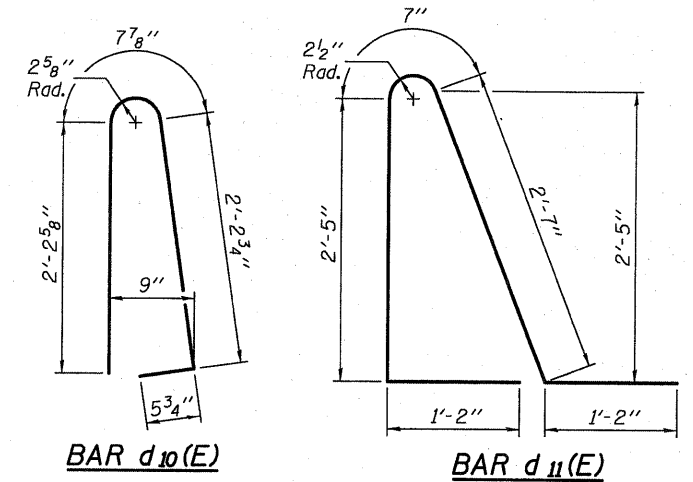
SECTION D-D
(See Plan for dimensions not shown)



VIEW E-E



PARAPET JOINT DETAILS



BAR d₁₀(E)

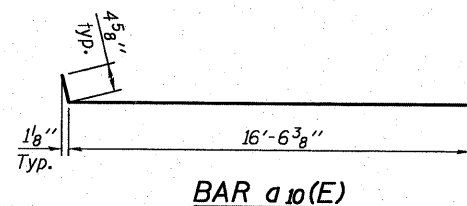
BAR d₁₁(E)

**TWO APPROACHES
BILL OF MATERIAL**

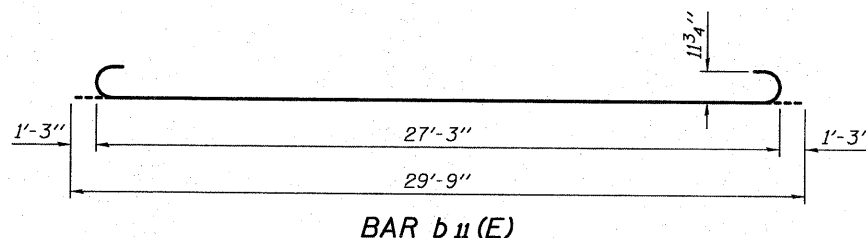
Bar	No.	Size	Length	Shape
a ₁₀ (E)	100	#4	16'-11"	—
a ₁₁ (E)	184	#5	16'-6"	—
a ₁₂ (E)	48	#6	6'-0"	—
b ₁₀ (E)	56	#4	29'-8"	—
b ₁₁ (E)	160	#9	29'-9"	—
b ₁₂ (E)	4	#4	14'-8"	—
b ₁₃ (E)	4	#4	14'-8"	—
d ₁₀ (E)	68	#5	5'-7"	—
d ₁₁ (E)	68	#5	7'-11"	—
e ₁₀ (E)	32	#4	14'-8"	—
e ₁₁ (E)	4	#8	14'-8"	—
t ₁₀ (E)	136	#4	9'-8"	—
w ₁₀ (E)	160	#5	16'-6"	—
Concrete Superstructure		Cu. Yd.	105.6	
Concrete Structures		Cu. Yd.	20.9	
Reinforcement Bars, Epoxy Coated		Pound	27,170	

DESIGNED	B.G.H.
CHECKED	L.D.G.
DRAWN	K.H.L.
CHECKED	B.G.H.

BA-0 10-31-08



BAR a₁₀(E)



BAR b₁₁(E)

(Sheet 2 of 2)
BRIDGE APPROACH SLAB DETAILS

SHEET NO. 14 23 SHEETS	F.A.S. RTE. 739	SECTION 1BR	COUNTY GREENE	TOTAL SHEETS 150	SHEET NO. 135
	S.N. 031-0039		CONTRACT NO. 76410		
FED. ROAD DIST. NO. ILLINOIS FED. AID PROJECT					

H.M. & G. NO. 6020161