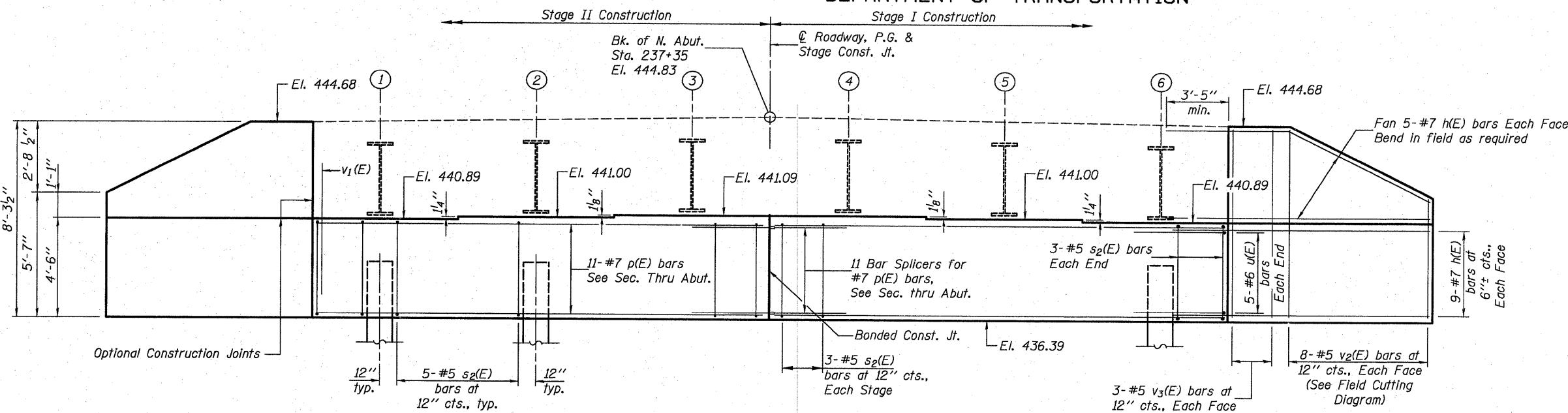
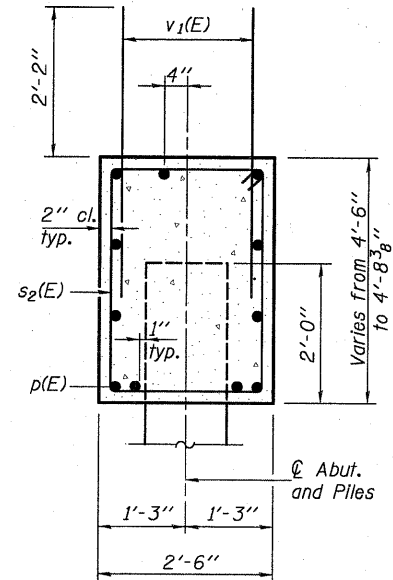


**STATE OF ILLINOIS  
DEPARTMENT OF TRANSPORTATION**

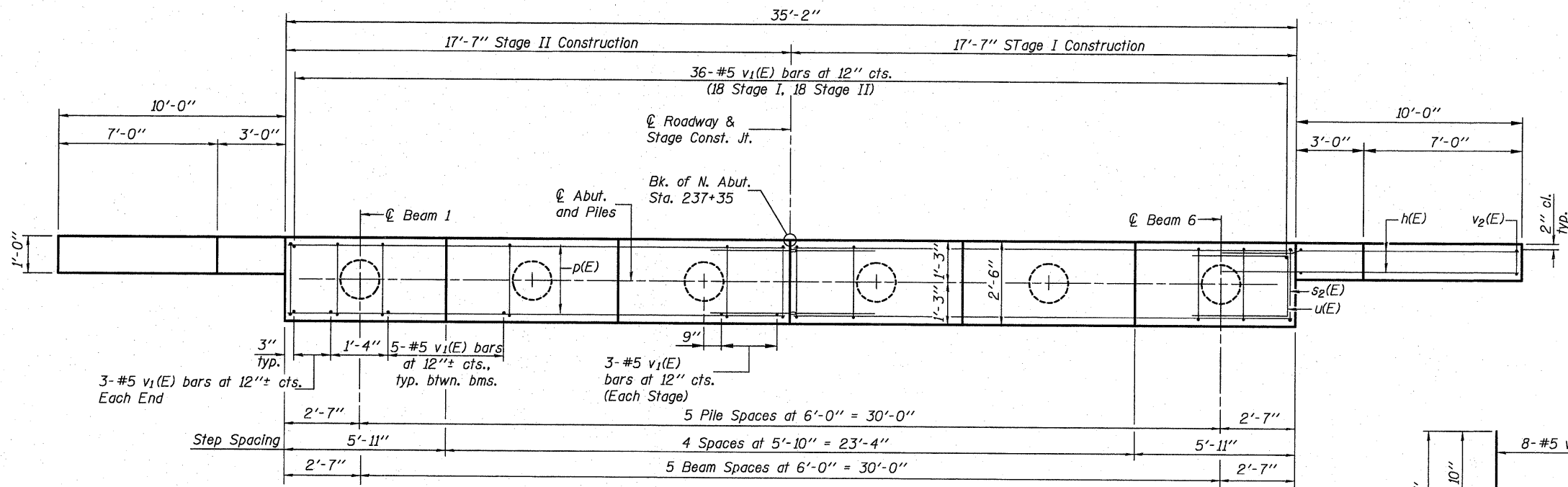
Notes:  
Four steps monolithically with cap.



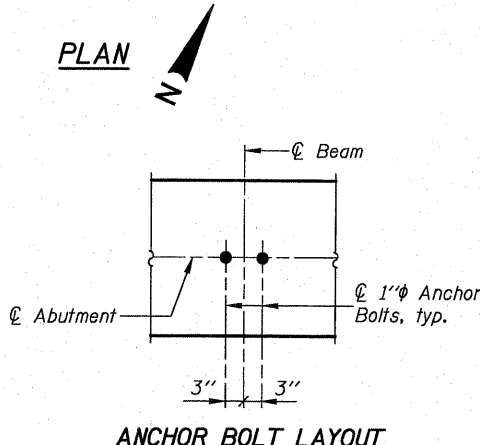
**ELEVATION**  
(Looking North)



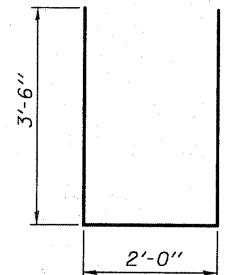
**SEC. THRU ABUT.**



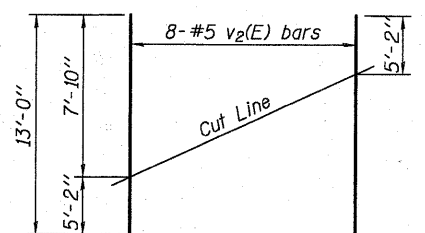
**PLAN**



**ANCHOR BOLT LAYOUT**



**BAR u(E)**



**FIELD CUTTING DIAGRAM**

Order v2(E) full length. Cut as shown and use remainder of bars in opposite face.

**BILL OF MATERIAL**

Bar	No.	Size	Length	Shape
h(E)	56	#7	14'-0"	—
p(E)	22	#7	17'-3"	—
s2(E)	32	#5	13'-7"	□
u(E)	10	#6	9'-0"	—
v1(E)	68	#5	4'-4"	—
v2(E)	16	#5	13'-0"	—
v3(E)	12	#5	7'-10"	—
Structure Excavation		Cu. Yd.	118	
Concrete Structures		Cu. Yd.	20.4	
Reinforcement Bars, Epoxy Coated		Pound	3,590	
Furnishing Metal Shell Piles 14"x0.312"		Foot	315	
Driving Piles		Foot	315	
Test Pile Metal Shell		Each	1	

For details of Bar Splicers, see sht. 19 of 23.  
For details of piles, see sht. 20 of 23.

**PILE DATA**

Type: Metal Shell 14"x0.312"  
Nominal Required Bearing: 480 kips  
Factored Resistance Available: 240 kips  
Est. Length: 63 feet  
No. Production Piles: 5  
No. Test Piles: 1

DESIGNED	B.G.H.
CHECKED	L.D.G.
DRAWN	K.H.L.
CHECKED	B.G.H.

AI-0 10-1-08

**NORTH ABUTMENT**

SHEET NO. 18 23 SHEETS	F.A.S. RTE. 739	SECTION 1BR	COUNTY GREENE	TOTAL SHEETS 150	SHEET NO. 139
	S.N. 031-0039		CONTRACT NO. 76410		
FED. ROAD DIST. NO. ILLINOIS FED. AID PROJECT					