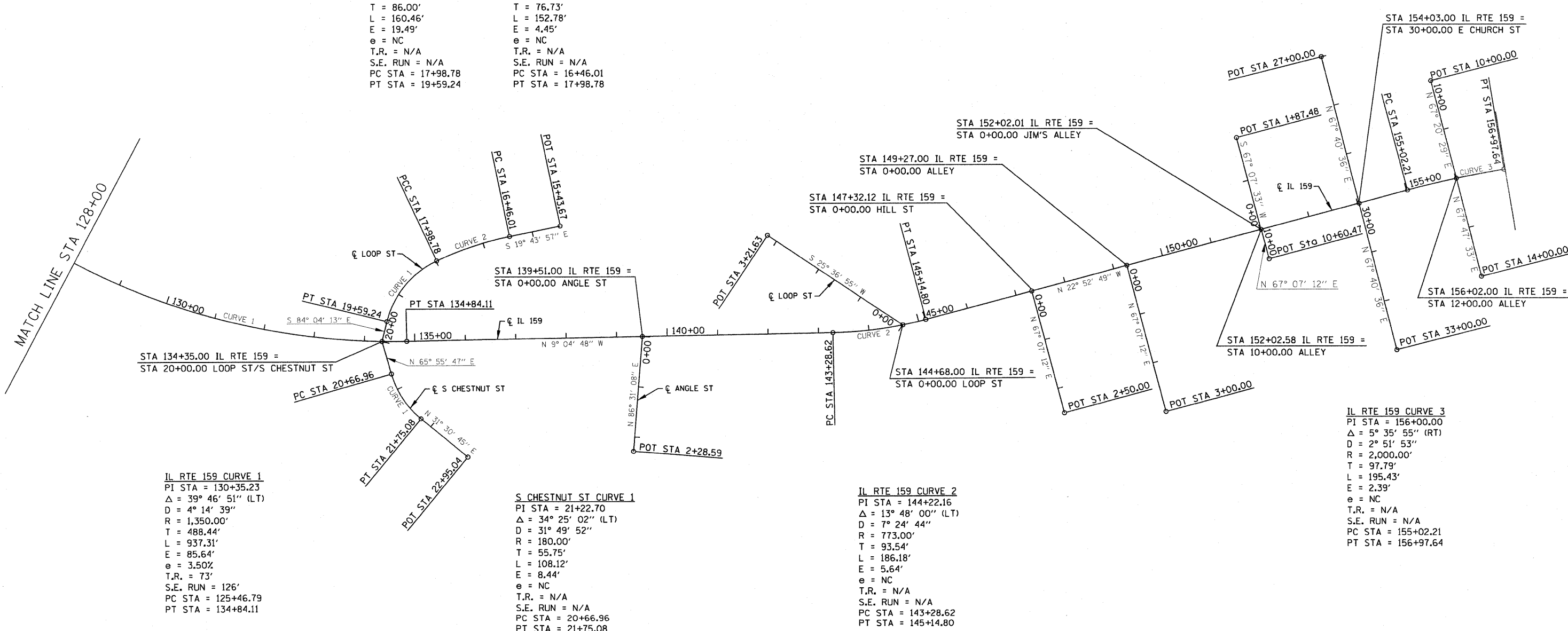




**LOOP ST CURVE 1**  
 PI STA = 18+84.78  
 $\Delta = 51^\circ 04' 30''$  (LT)  
 D = 31' 49' 52"  
 R = 180.00'  
 T = 86.00'  
 L = 160.46'  
 E = 19.49'  
 e = NC  
 T.R. = N/A  
 S.E. RUN = N/A  
 PC STA = 17+98.78  
 PT STA = 19+59.24

**LOOP ST CURVE 2**  
 PI STA = 17+22.74  
 $\Delta = 13^\circ 15' 46''$  (LT)  
 D = 8' 40' 52"  
 R = 660.00'  
 T = 76.73'  
 L = 152.78'  
 E = 4.45'  
 e = NC  
 T.R. = N/A  
 S.E. RUN = N/A  
 PC STA = 16+46.01  
 PT STA = 17+98.78

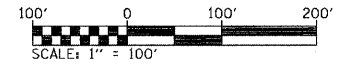


**IL RTE 159 CURVE 1**  
 PI STA = 130+35.23  
 $\Delta = 39^\circ 46' 51''$  (LT)  
 D = 4' 14' 39"  
 R = 1,350.00'  
 T = 488.44'  
 L = 937.31'  
 E = 85.64'  
 e = 3.50%  
 T.R. = 73'  
 S.E. RUN = 126'  
 PC STA = 125+46.79  
 PT STA = 134+84.11

**S CHESTNUT ST CURVE 1**  
 PI STA = 21+22.70  
 $\Delta = 34^\circ 25' 02''$  (LT)  
 D = 31' 49' 52"  
 R = 180.00'  
 T = 55.75'  
 L = 108.12'  
 E = 8.44'  
 e = NC  
 T.R. = N/A  
 S.E. RUN = N/A  
 PC STA = 20+66.96  
 PT STA = 21+75.08

**IL RTE 159 CURVE 2**  
 PI STA = 144+22.16  
 $\Delta = 13^\circ 48' 00''$  (LT)  
 D = 7' 24' 44"  
 R = 773.00'  
 T = 93.54'  
 L = 186.18'  
 E = 5.64'  
 e = NC  
 T.R. = N/A  
 S.E. RUN = N/A  
 PC STA = 143+28.62  
 PT STA = 145+14.80

**IL RTE 159 CURVE 3**  
 PI STA = 156+00.00  
 $\Delta = 5^\circ 35' 55''$  (RT)  
 D = 2' 51' 53"  
 R = 2,000.00'  
 T = 97.79'  
 L = 195.43'  
 E = 2.39'  
 e = NC  
 T.R. = N/A  
 S.E. RUN = N/A  
 PC STA = 155+02.21  
 PT STA = 156+97.64



FILE NAME =	USER NAME = #USER#	DESIGNED -	REVISED -	<b>STATE OF ILLINOIS DEPARTMENT OF TRANSPORTATION</b>	<b>PROPOSED ALIGNMENT</b>			F.A.P. RTE	SECTION	COUNTY	TOTAL SHEETS	SHEET NO.
#FILE#		DRAWN -	REVISED -					600	60-(30,31,128)-1	MADISON/ST. CLAIR	399	54
		CHECKED -	REVISED -		CONTRACT NO. 76830							
		DATE -	REVISED -		SCALE: 1" = 100'	SHEET NO. 2 OF 2 SHEETS	STA 128+00.00 TO STA 156+98.00	FED. ROAD DIST. NO.	ILLINOIS FED. AID PROJECT			