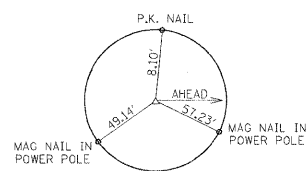
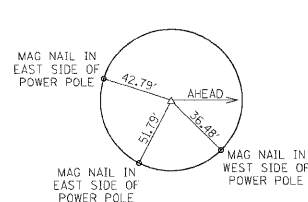


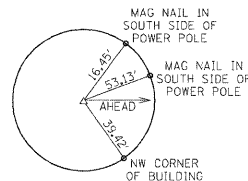
POT STA 0+00.00
(JIM'S ALLEY) =
ML STA 152+02.01
(P.K. NAIL)



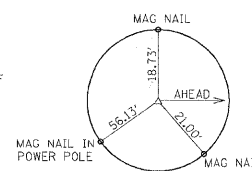
POT STA 1+87.48
(JIM'S ALLEY)
(P.K. NAIL)



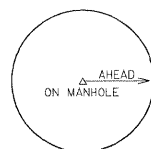
POT STA 10+00.00
(ALLEY @ STA 156+02.58) =
ML STA 156+02.58
(MAG NAIL)



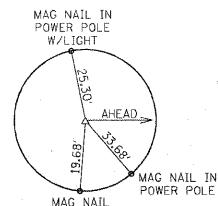
POT STA 10+60.47
(ALLEY @ STA 156+02.58)
(MAG NAIL)



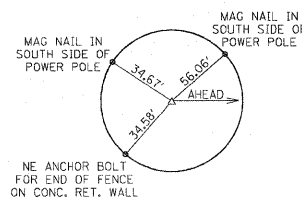
POT STA 27+00.00
(CHURCH ST)
(P.K. NAIL)



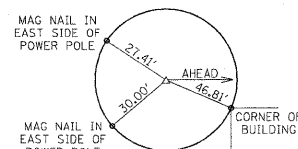
POT STA 30+00.00
(CHURCH ST) =
ML STA 154+03.00



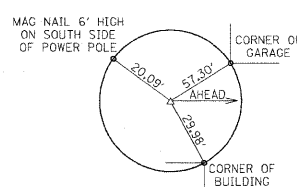
POT STA 33+00.00
(CHURCH ST)
(MAG NAIL)



POT STA 10+00.00
(ALLEY @ STA 156+02.00)
(MAG NAIL)



POT STA 12+00.00
(ALLEY @ STA 156+02.00) =
ML STA 156+02.00
(MAG NAIL)



POT STA 14+00.00
(ALLEY @ STA 156+02.00)
(MAG NAIL)

CENTERLINE CONTROL COORDINATES

REFERENCE POINTS	NORTHING	EASTING
P.O.T. STA. 100+00.00	724420.1376	347900.8680
P.O.T. STA. 101+50.00	724549.6520	347976.5386
P.O.T. STA. 106+52.89	724983.8610	348230.2313
P.O.T. STA. 108+46.00	725150.9454	348327.0540
P.O.T. STA. 115+38.10	725749.7700	348674.0632
P.O.T. STA. 115+90.53	725795.1323	348700.3499
P.O.T. STA. 125+15.12	726590.1374	349172.4040
P.C. STA. 125+46.79	726617.3704	349188.5743
P.O.T. STA. 134+35.00	727471.0464	349367.7322
P.T. STA. 134+84.11	727519.6675	349360.8661
P.O.T. STA. 139+51.00	727980.7106	349287.1839
P.C. STA. 143+28.62	728353.5933	349227.5911
P.O.T. STA. 144+68.00	728488.5095	349193.3374
P.T. STA. 145+14.80	728532.1491	349176.4582
P.O.T. STA. 147+32.12	728732.3686	349091.9640
P.O.T. STA. 149+27.00	728911.9192	349016.1922
P.O.T. STA. 152+02.01	729165.2931	348909.2665
P.O.T. STA. 152+02.58	729165.8167	348909.0455
P.O.T. STA. 154+03.00	729350.4646	348831.1226
P.C. STA. 155+02.21	729441.8691	348792.5492
P.O.T. STA. 156+02.00	729534.7401	348756.0586
P.T. STA. 156+97.64	729625.3474	348725.4755
P.C. STA. 157+33.68	729659.7653	348714.7677
P.C. STA. 1+90.18 (S. MORRISON)	724550.6352	347786.3655
P.T. STA. 8+74.60 (S. MORRISON)	724139.6040	347313.2360
P.O.T. STA. 10+95.80 (S. MORRISON)	723920.4210	347283.4500
P.O.T. STA. 1+38.70 (CHEROKEE DR.)	725221.0795	348207.3905
P.O.T. STA. 2+15.00 (IDLEWOOD DR.)	725859.8438	348489.3777
P.O.T. STA. 7+12.27 (S. CLINTON ST.)	726783.3420	348960.4510
P.C. STA. 7+27.42 (S. CLINTON ST.)	726773.8884	348972.2882
P.R.C. STA. 7+94.51 (S. CLINTON ST.)	726725.6487	349018.6307
P.T. STA. 8+59.49 (S. CLINTON ST.)	726678.7294	349063.3340
P.O.T. STA. 9+16.47 (S. CLINTON ST./MCKINLEY AVE.)	726642.8043	349107.5632
P.C. STA. 10+37.69 (S. CLINTON ST.)	726566.3769	349201.6566
P.T. STA. 11+35.57 (S. CLINTON ST.)	726491.7634	349264.0831
P.O.T. STA. 12+62.76 (S. CLINTON ST.)	726380.4380	349325.5920
P.C. STA. 0+87.66 (MCKINLEY AVE.)	726567.4302	349062.8079
P.T. STA. 2+68.26 (MCKINLEY AVE.)	726448.2776	348930.7208
P.O.T. STA. 3+50.63 (MCKINLEY AVE.)	726413.7189	348855.9512
P.O.T. STA. 15+43.67 (S. LOOP ST.)	727789.1780	349092.5747
P.C. STA. 16+46.01 (S. LOOP ST.)	727692.8512	349127.1265
P.C.C. STA. 17+98.78 (S. LOOP ST.)	727556.2714	349194.8182
P.T. STA. 19+59.24 (S. LOOP ST.)	727475.2571	349327.1917
P.C. STA. 20+66.96 (S. CHESTNUT ST.)	727498.3563	349428.8690
P.T. STA. 21+75.08 (S. CHESTNUT ST.)	727568.6211	349508.9092
P.O.T. STA. 22+95.04 (S. CHESTNUT ST.)	727670.8857	349571.6078
P.O.T. STA. 2+28.59 (ANGLE ST.)	727994.5910	349515.3562
P.O.T. STA. 3+21.63 (N. LOOP ST.)	728198.4920	349054.2900
P.O.T. STA. 2+50.00 (HILL ST.)	728829.5697	349322.2941
P.O.T. STA 3+00.00 (ALLEY @ M.L. STA. 149+27.00)	729028.5606	349292.5883
P.O.T. STA. 1+87.48 (JIM'S ALLEY)	729092.4188	348736.5325
P.O.T. STA. 10+60.47 (ALLEY @ M.L. STA. 152+02.58)	729189.3261	348964.7540
P.O.T. STA. 27+00.00 (CHURCH ST.)	729236.5143	348553.6063
P.O.T. STA. 33+00.00 (CHURCH ST.)	729464.4149	349108.6390
P.O.T. STA. 10+00.00 (ALLEY @ M.L. STA. 156+02.00)	729457.6920	348571.4954
P.O.T. STA. 14+00.00 (ALLEY @ M.L. STA. 156+02.00)	729610.3323	348941.2229

BENCHMARKS:

BENCHMARK: BM #114
CHISELED □ ON CENTER OF N. HEADWALL FOR CONCRETE BOX CULVERT LOCATED ON W. SIDE OF IL. RT. 159 IN "BUFF TRUCK OUTFITTERS" PARKING LOT ACROSS FROM HISTORICAL LANDMARK "CATSUP BOTTLE". STA. 129+42±, 10' LT, ELEV. 475.811

BENCHMARK: BM #113
CHISELED "X" ON TOP NE FLANGE BOLT ON FIRE HYDRANT LOCATED ON W. SIDE OF IL. RT. 159 IN FRONT OF BUILDING ADDRESSED #311. STA. 147+46±, 24' LT, ELEV. 558.990