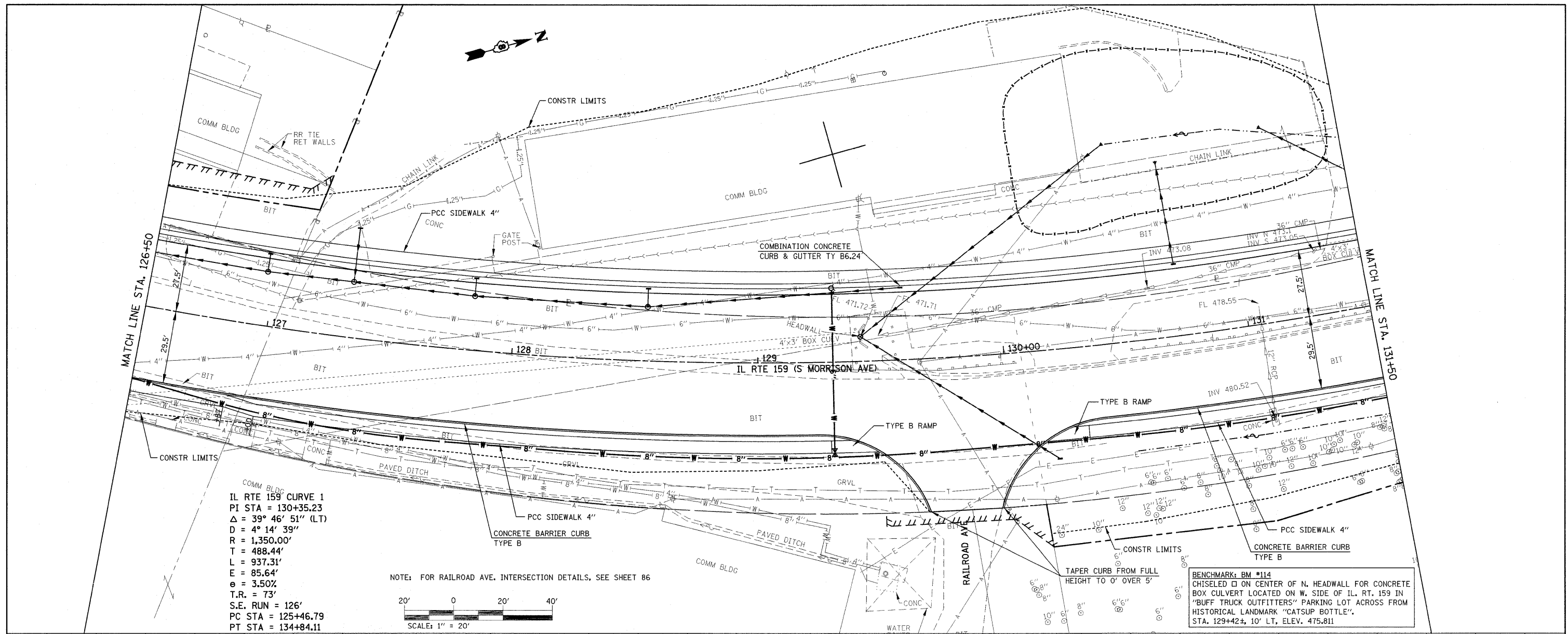


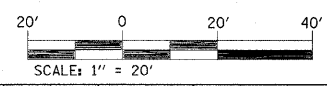
PLAN	SURVEYED	BY	DATE
	PLOTTED		
	NOTED		
	FILED		
	NO. OF WAY CHECKED		
	PAID FILE NAME		

PROFILE	SURVEYED	BY	DATE
	PLOTTED		
	NOTED		
	FILED		
	NO. OF WAY CHECKED		
	PAID FILE NAME		

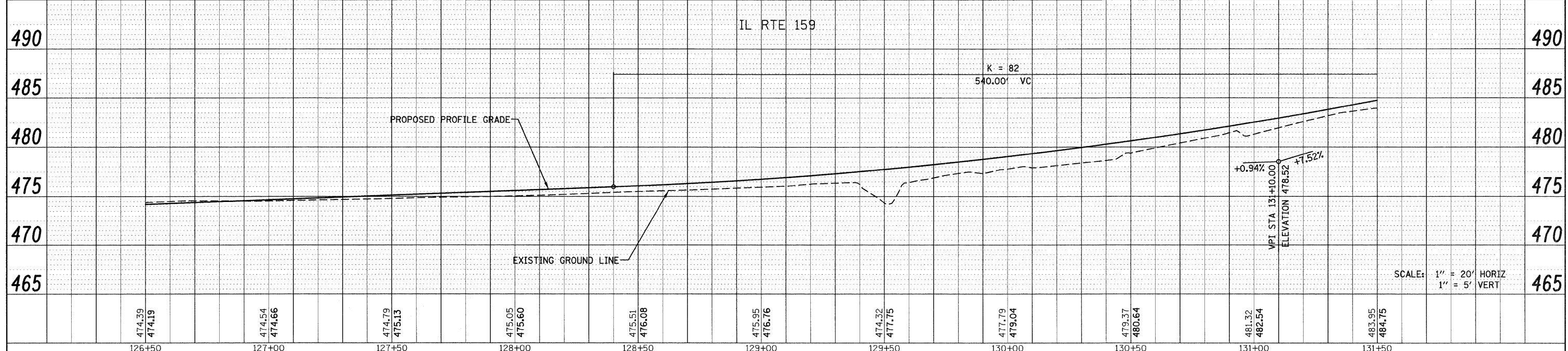


IL RTE 159 CURVE 1  
 PI STA = 130+35.23  
 $\Delta = 39^\circ 46' 51''$  (LT)  
 $D = 4^\circ 14' 39''$   
 $R = 1,350.00'$   
 $T = 488.44'$   
 $L = 937.31'$   
 $E = 85.64'$   
 $e = 3.50\%$   
 $T.R. = 73'$   
 $S.E. RUN = 126'$   
 $PC STA = 125+46.79$   
 $PT STA = 134+84.11$

NOTE: FOR RAILROAD AVE. INTERSECTION DETAILS, SEE SHEET 86



BENCHMARK: BM #114  
 CHISELED  $\square$  ON CENTER OF N. HEADWALL FOR CONCRETE BOX CULVERT LOCATED ON W. SIDE OF IL. RT. 159 IN 'BUFF TRUCK OUTFITTERS' PARKING LOT ACROSS FROM HISTORICAL LANDMARK 'CATSUP BOTTLE'. STA. 129+42.4, 10' LT, ELEV. 475.811



FILE NAME =	USER NAME = default	DESIGNED -	REVISED -	<b>STATE OF ILLINOIS DEPARTMENT OF TRANSPORTATION</b>	<b>PLANPROFILE IL ROUTE 159</b>	F.A.P. RTE.	SECTION	COUNTY	TOTAL SHEETS	SHEET NO.
P:\Projects\513501\CADD\DGN\0876830-sh1-p.dgn	npr.f.dgn	DRAWN -	REVISED -			600	60-(30,31,128)-1	MAISON/ST. CLAIR	399	62
PLOT SCALE = 28.0200' / IN.		CHECKED -	REVISED -			CONTRACT NO. 76830				
PLOT DATE = 4/30/2010		DATE -	REVISED -			FED. ROAD DIST. NO. ILLINOIS FED. AID PROJECT				