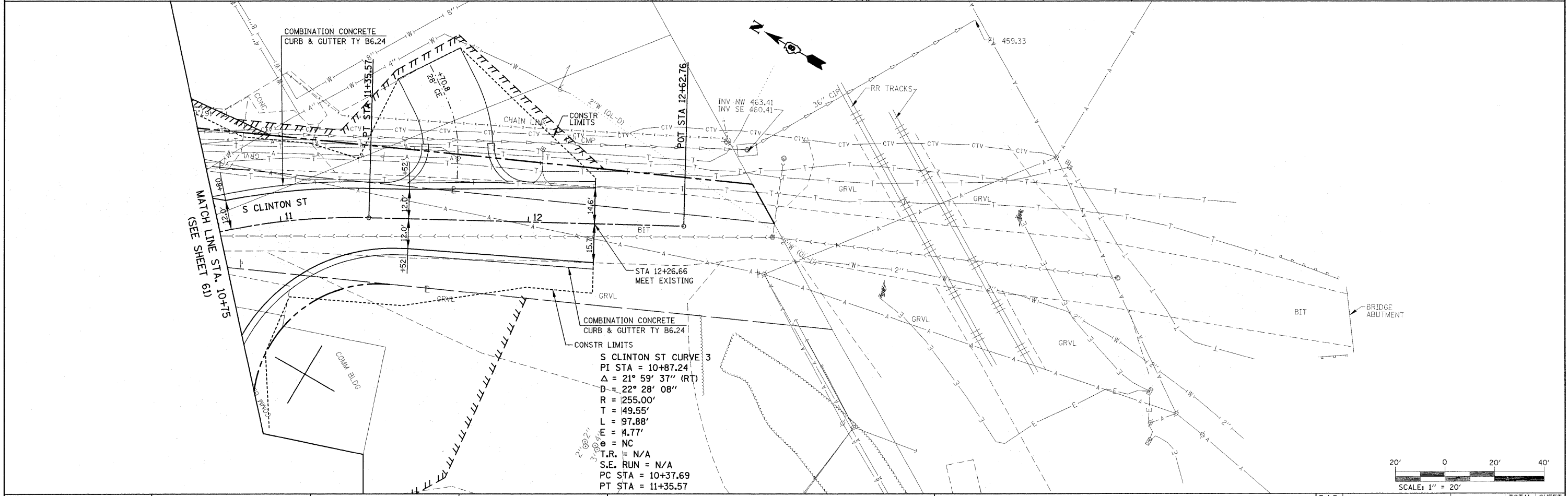
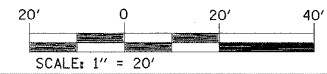
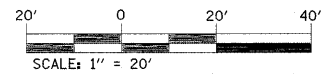
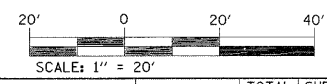


**S CLINTON ST CURVE 1**  
 PI STA = 7+61.16  
 $\Delta = 15^\circ 04' 25''$  (RT)  
 D = 22° 28' 08"  
 R = 255.00'  
 T = 33.74'  
 L = 67.09'  
 E = 2.22'  
 e = NC  
 T.R. = N/A  
 S.E. RUN = N/A  
 PC STA = 7+27.42  
 PT STA = 7+94.51

**S CLINTON ST CURVE 2**  
 PI STA = 8+27.17  
 $\Delta = 14^\circ 36' 02''$  (LT)  
 D = 22° 28' 08"  
 R = 255.00'  
 T = 32.67'  
 L = 64.98'  
 E = 2.08'  
 e = NC  
 T.R. = N/A  
 S.E. RUN = N/A  
 PC STA = 7+94.51  
 PT STA = 8+59.49



**S CLINTON ST CURVE 3**  
 PI STA = 10+87.24  
 $\Delta = 21^\circ 59' 37''$  (RT)  
 D = 22° 28' 08"  
 R = 255.00'  
 T = 49.55'  
 L = 97.88'  
 E = 4.77'  
 e = NC  
 T.R. = N/A  
 S.E. RUN = N/A  
 PC STA = 10+37.69  
 PT STA = 11+35.57



FILE NAME =  
 P:\Projects\513501\CADD\DN\0876830-sh1\p1npr.f.dgn

USER NAME = default  
 PLOT SCALE = 20.0000 / IN.  
 PLOT DATE = 4/30/2010

DESIGNED -  
 DRAWN -  
 CHECKED -  
 DATE -

REVISED -  
 REVISED -  
 REVISED -  
 REVISED -

**STATE OF ILLINOIS  
 DEPARTMENT OF TRANSPORTATION**

**SIDE ROAD PLAN  
 S. CLINTON ST./MCKINLEY AVE.**  
 SCALE: 1" = 20' SHEET NO. 17 OF 24 SHEETS STA. N/A TO STA. N/A

F.A.P. RTE.	SECTION	COUNTY	TOTAL SHEETS	SHEET NO.
600	60-(30,31,128)-1	MADISON/ST. CLAIR	399	73
CONTRACT NO. 76830				
FED. ROAD DIST. NO.		ILLINOIS FED. AID PROJECT		