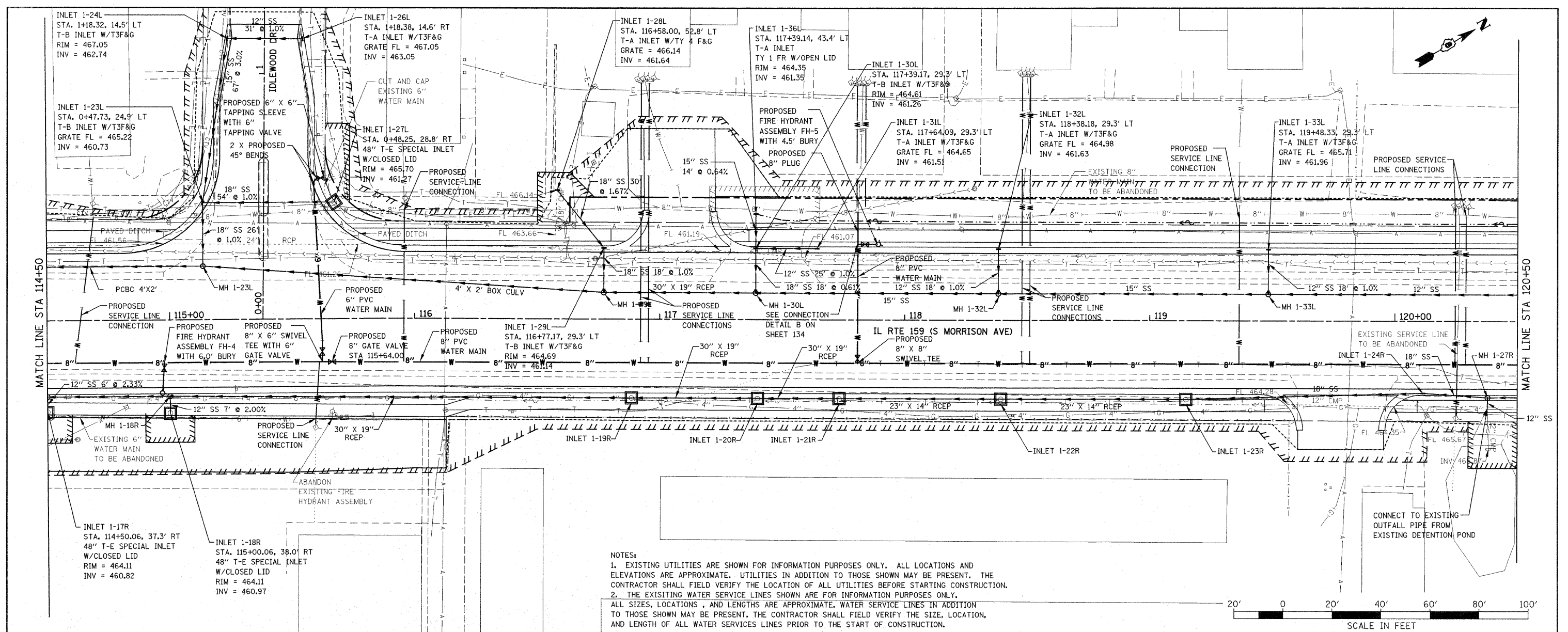
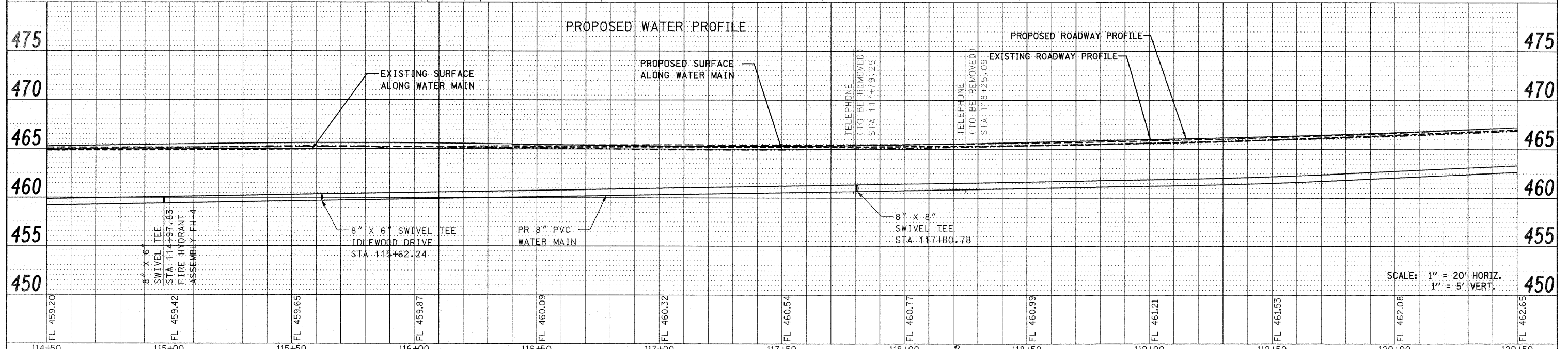
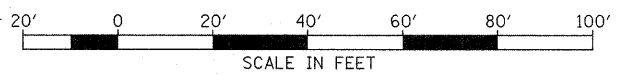


| | |
|----------|--|
| DATE | |
| BY | |
| PLANNING | |
| DESIGNED | |
| CHECKED | |
| DATE | |

| | |
|----------|--|
| DATE | |
| BY | |
| PROFILE | |
| DESIGNED | |
| CHECKED | |
| DATE | |



NOTES:
 1. EXISTING UTILITIES ARE SHOWN FOR INFORMATION PURPOSES ONLY. ALL LOCATIONS AND ELEVATIONS ARE APPROXIMATE. UTILITIES IN ADDITION TO THOSE SHOWN MAY BE PRESENT. THE CONTRACTOR SHALL FIELD VERIFY THE LOCATION OF ALL UTILITIES BEFORE STARTING CONSTRUCTION.
 2. THE EXISTING WATER SERVICE LINES SHOWN ARE FOR INFORMATION PURPOSES ONLY. ALL SIZES, LOCATIONS, AND LENGTHS ARE APPROXIMATE. WATER SERVICE LINES IN ADDITION TO THOSE SHOWN MAY BE PRESENT. THE CONTRACTOR SHALL FIELD VERIFY THE SIZE, LOCATION, AND LENGTH OF ALL WATER SERVICES LINES PRIOR TO THE START OF CONSTRUCTION.



| | | | | | | | | | | |
|--|---------------------|------------|-----------|---|---|---|----------------------------|--------------------------------|--------------------|----------------|
| FILE NAME = P:\Projects\513501\CADD\GN\0876830-shd.dwg | USER NAME = default | DESIGNED - | REVISED - | STATE OF ILLINOIS DEPARTMENT OF TRANSPORTATION | DRAINAGE AND UTILITY PLAN/PROFILE IL ROUTE 159 | F.A.P. RTE. = 600 | SECTION = 60-(30,31,128)-1 | COUNTY = MADISON/ST. CLAIR | TOTAL SHEETS = 399 | SHEET NO. = 98 |
| PLOT SCALE = 20.0000' / IN. | DATE = 12/17/2009 | DRAWN - | REVISED - | | | SCALE: 1" = 20' | SHEET NO. 10 OF 33 SHEETS | STA 114+50.00 TO STA 120+50.00 | CONTRACT NO. 76830 | |
| | | CHECKED - | REVISED - | | | FED. ROAD DIST. NO. ILLINOIS FED. AID PROJECT | | | | |
| | | DATE - | REVISED - | | | | | | | |