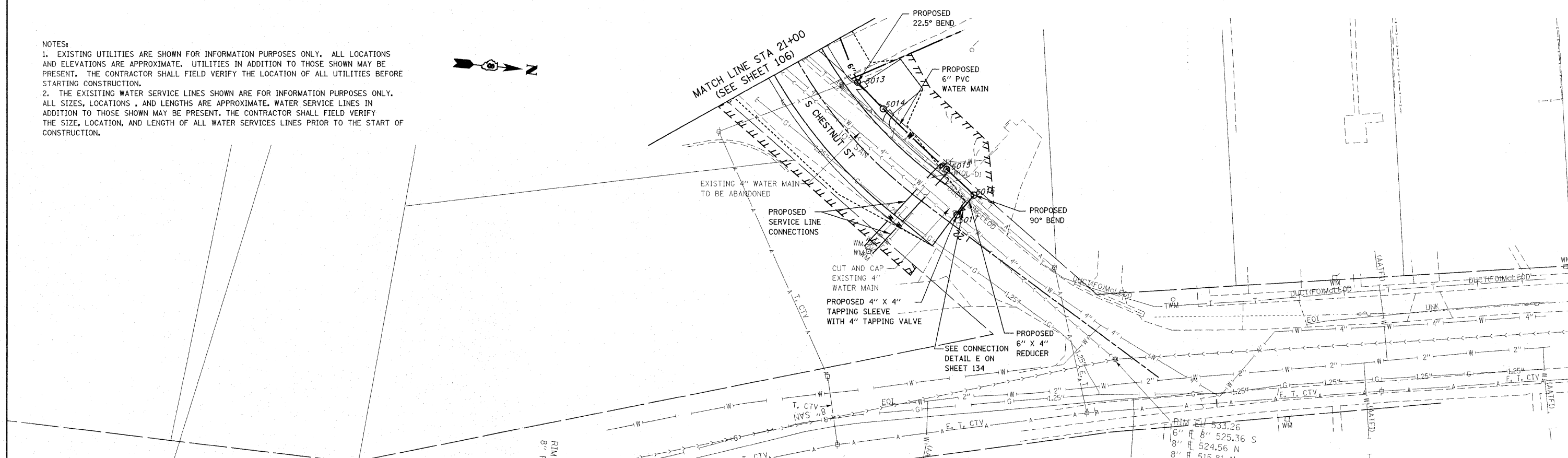


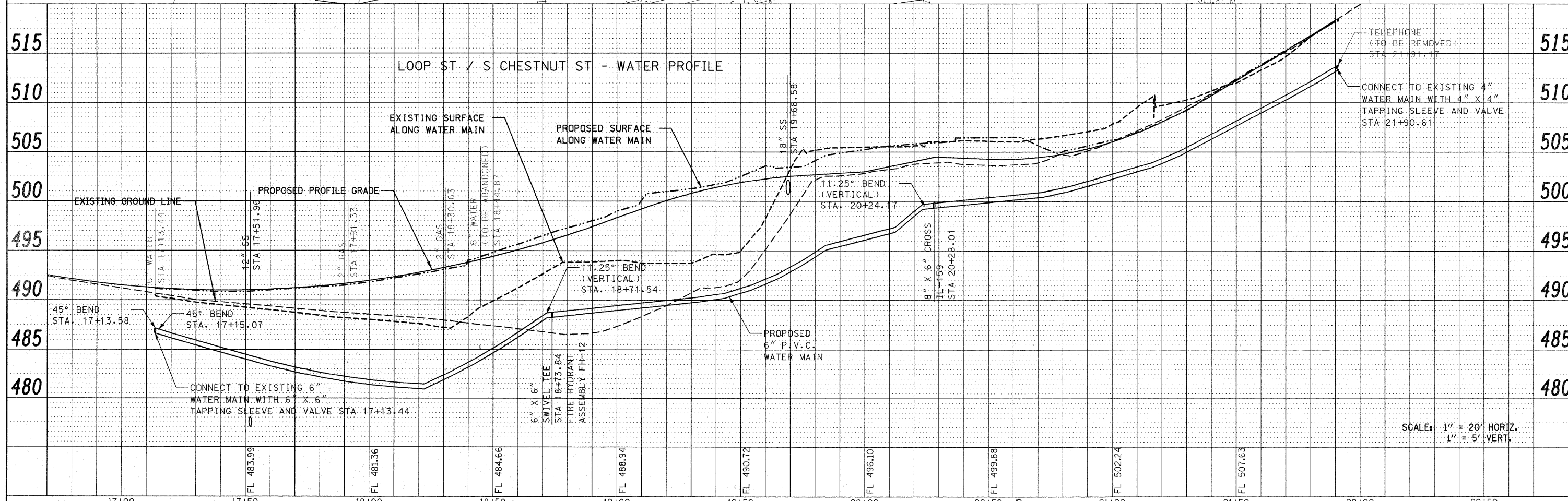
NOTES:  
 1. EXISTING UTILITIES ARE SHOWN FOR INFORMATION PURPOSES ONLY. ALL LOCATIONS AND ELEVATIONS ARE APPROXIMATE. UTILITIES IN ADDITION TO THOSE SHOWN MAY BE PRESENT. THE CONTRACTOR SHALL FIELD VERIFY THE LOCATION OF ALL UTILITIES BEFORE STARTING CONSTRUCTION.  
 2. THE EXISTING WATER SERVICE LINES SHOWN ARE FOR INFORMATION PURPOSES ONLY. ALL SIZES, LOCATIONS, AND LENGTHS ARE APPROXIMATE. WATER SERVICE LINES IN ADDITION TO THOSE SHOWN MAY BE PRESENT. THE CONTRACTOR SHALL FIELD VERIFY THE SIZE, LOCATION, AND LENGTH OF ALL WATER SERVICES LINES PRIOR TO THE START OF CONSTRUCTION.



PLAN	DATE
BY	
NO. _____	
NO. _____	
NO. _____	
NO. _____	



PROFILE	DATE
BY	
NO. _____	
NO. _____	
NO. _____	
NO. _____	



FILE NAME =	USER NAME = default	DESIGNED -	REVISED -	<b>STATE OF ILLINOIS</b> <b>DEPARTMENT OF TRANSPORTATION</b>	<b>DRAINAGE AND UTILITY SIDE ROAD PLAN/PROFILE</b> <b>LOOP ST./S. CHESTNUT ST.</b>	F.A.P. RTE.	SECTION	COUNTY	TOTAL SHEETS	SHEET NO.	
pi:\projects\519501\cadd\dgn\0876830-shd-d	am-sider.cadd	DRAWN -	REVISED -			600	60-(30,31,128)-1	MADISON/ST. CLAIR	399	127	
PLOT SCALE = 20.0000' / 1"	PLOT DATE = 12/17/2009	CHECKED -	REVISED -			CONTRACT NO.					
		DATE -	REVISED -			FED. ROAD DIST. NO. ILLINOIS FED. AID PROJECT					