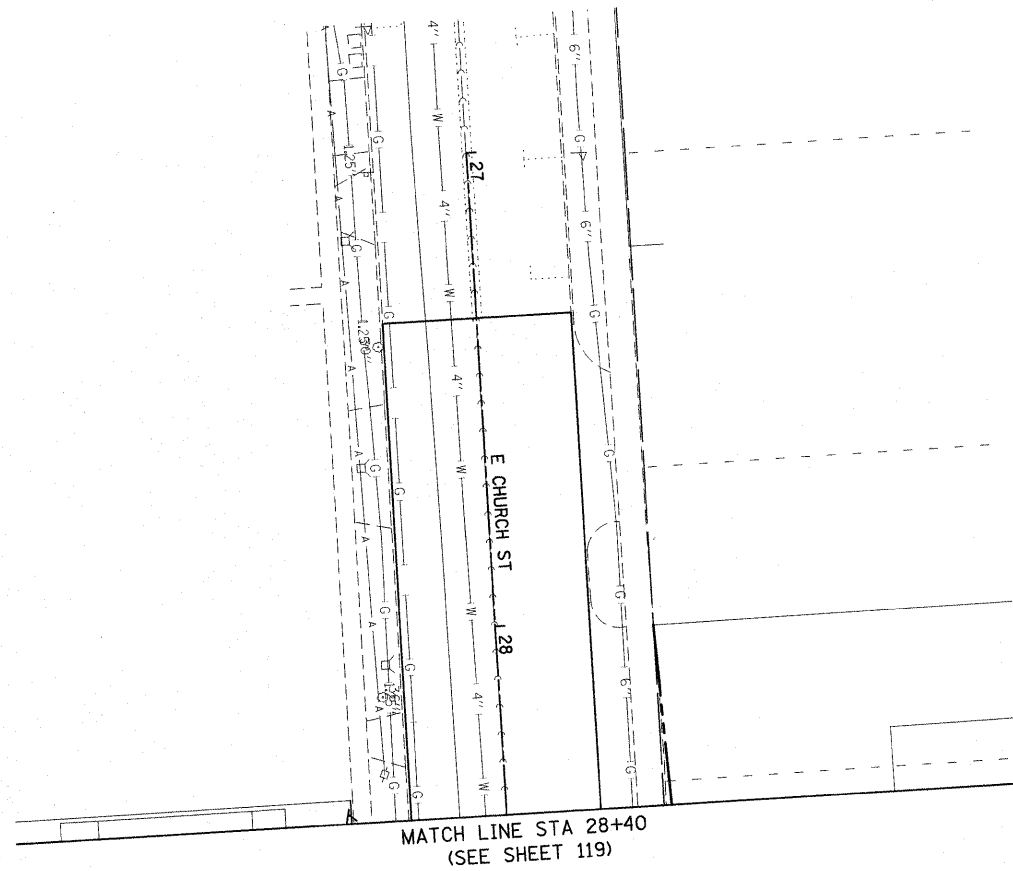




NOTES:

1. EXISTING UTILITIES ARE SHOWN FOR INFORMATION PURPOSES ONLY. ALL LOCATIONS AND ELEVATIONS ARE APPROXIMATE. UTILITIES IN ADDITION TO THOSE SHOWN MAY BE PRESENT. THE CONTRACTOR SHALL FIELD VERIFY THE LOCATION OF ALL UTILITIES BEFORE STARTING CONSTRUCTION.
2. THE EXISTING WATER SERVICE LINES SHOWN ARE FOR INFORMATION PURPOSES ONLY. ALL SIZES, LOCATIONS, AND LENGTHS ARE APPROXIMATE. WATER SERVICE LINES IN ADDITION TO THOSE SHOWN MAY BE PRESENT. THE CONTRACTOR SHALL FIELD VERIFY THE SIZE, LOCATION, AND LENGTH OF ALL WATER SERVICES LINES PRIOR TO THE START OF CONSTRUCTION.

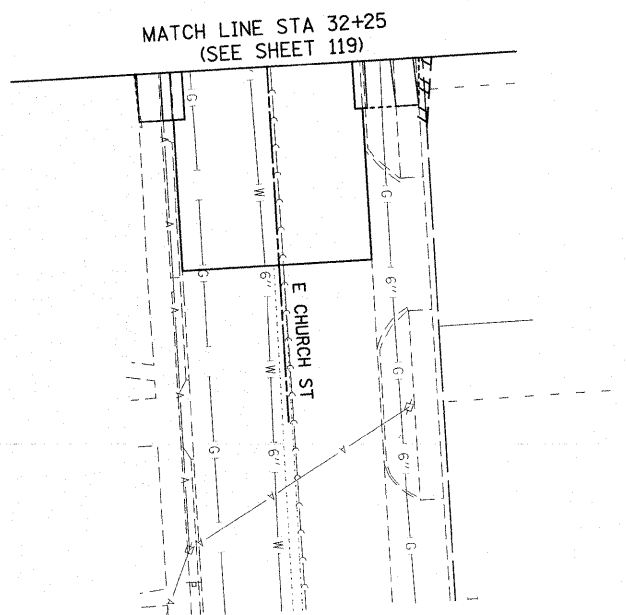


MATCH LINE STA 28+40
(SEE SHEET 119)



NOTES:

1. EXISTING UTILITIES ARE SHOWN FOR INFORMATION PURPOSES ONLY. ALL LOCATIONS AND ELEVATIONS ARE APPROXIMATE. UTILITIES IN ADDITION TO THOSE SHOWN MAY BE PRESENT. THE CONTRACTOR SHALL FIELD VERIFY THE LOCATION OF ALL UTILITIES BEFORE STARTING CONSTRUCTION.
2. THE EXISTING WATER SERVICE LINES SHOWN ARE FOR INFORMATION PURPOSES ONLY. ALL SIZES, LOCATIONS, AND LENGTHS ARE APPROXIMATE. WATER SERVICE LINES IN ADDITION TO THOSE SHOWN MAY BE PRESENT. THE CONTRACTOR SHALL FIELD VERIFY THE SIZE, LOCATION, AND LENGTH OF ALL WATER SERVICES LINES PRIOR TO THE START OF CONSTRUCTION.



MATCH LINE STA 32+25
(SEE SHEET 119)

Rev.

**STATE OF ILLINOIS
DEPARTMENT OF TRANSPORTATION**

**DRAINAGE AND UTILITY SIDE ROAD PLAN
E. CHURCH ST.**

SCALE: 1" = 20' SHEET NO. 10 OF 12 SHEETS STA N/A TO STA N/A

F.A.P. RTE.	SECTION	COUNTY	TOTAL SHEETS	SHEET NO.
600	60-(30,31,128)-1	MADISON/ST. CLAIR	399	131
CONTRACT NO. 76830				
FED. ROAD DIST. NO. ILLINOIS FED. AID PROJECT				

FILE NAME =	USER NAME = default	DESIGNED -	REVISED -
p:\projects\513581\cadd\dgn\0876830-shr	drain-sideroads.dgn	DRAWN -	REVISED -
	PLOT SCALE = 20.0000' / IN.	CHECKED -	REVISED -
	PLOT DATE = 12/17/2009	DATE -	REVISED -