

SEQUENCE OF CONSTRUCTION

STAGE I HIGHWAY - SHORT TERM PAVEMENT CONSTRUCTION

1. SHIFT TRAFFIC TO STAGE I TRAFFIC CONFIGURATION.
2. REMOVE EXISTING CURBS AND GUTTERS ON EAST SIDE OF ROADWAY NECESSARY FOR CONSTRUCTION OF TEMPORARY HMA BINDER AND SURFACE.
3. CONSTRUCT CURB & GUTTER FROM STA. 102+00 TO STA. 106+94 ON NORTHBOUND LANES.
4. REMOVE AND REPLACE TRIPLE BOX CULVERT UNDER EXISTING NORTHBOUND LANES.
5. ACCESS TO ENTRANCES SHALL BE MAINTAINED AT ALL TIMES.
6. MAINTAIN TWO WAY TRAFFIC ON SIDEROADS OVERNIGHT, MAY REDUCE TO ONE LANE DURING CONSTRUCTION OPERATIONS. (SEE SPECIAL PROVISIONS)
7. STOP SIGNS AND STREET SIGNS AT SIDEROADS SHALL BE ADJUSTED AND MAINTAINED.
8. THE CONTRACTOR SHALL MAINTAIN PROPER DRAINAGE THROUGHOUT THE STAGE CONSTRUCTION.

STAGE II HIGHWAY - WIDENING/RESURFACING

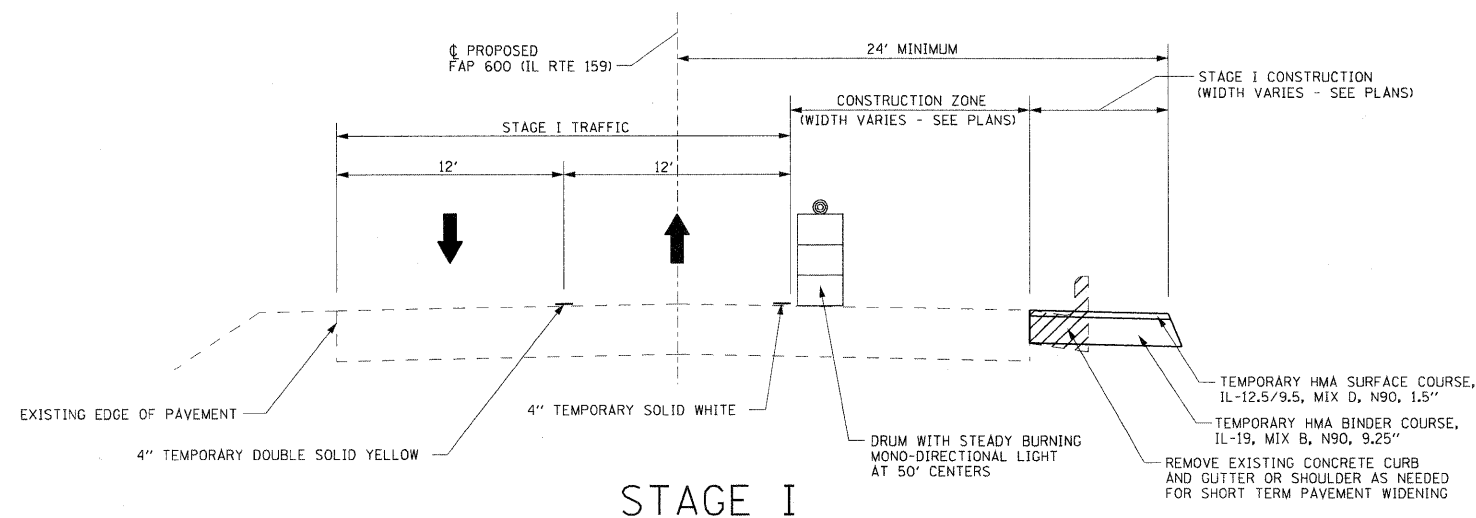
1. SHIFT TRAFFIC TO STAGE II TRAFFIC CONFIGURATION.
2. REMOVE EXISTING CURBS AND GUTTERS ON WEST SIDE OF IL 159.
3. REMOVE EXISTING PAVEMENT AS NECESSARY FOR STAGE II CONSTRUCTION. REMOVE AND REPLACE UTILITIES AS REQUIRED (INCLUDING SANITARY AND STORM SEWER)
4. REPLACE TRIPLE BOX CULVERT UNDER EXISTING SOUTHBOUND LANES AND OTHER DRAINAGE STRUCTURES TO PROPOSED ELEVATIONS.
5. CONSTRUCT NEW CURB AND GUTTERS.
6. PLACE HMA BINDER FOR WEST HALF OF PROPOSED PAVEMENT, ENTRANCES AND SIDEROADS, MAINTAINING TWO WAY TRAFFIC ON SIDEROADS OVERNIGHT, MAY REDUCE TO ONE LANE DURING CONSTRUCTION OPERATIONS. (SEE SPECIAL PROVISIONS)
7. PLACE TEMPORARY ASPHALT WEDGE AT WEST EDGE OF PAVEMENT FROM STA. 138+70 TO STA. 150+10 OR AS DIRECTED BY THE ENGINEER.
8. ACCESS TO ENTRANCES SHALL BE MAINTAINED AT ALL TIMES EXCEPT WHERE NOTED.
9. STOP SIGNS AND STREET SIGNS AT SIDEROADS SHALL BE ADJUSTED AND MAINTAINED BY THE CONTRACTOR.
10. PROPER DRAINAGE SHALL BE MAINTAINED BY THE CONTRACTOR.
11. COMPLETE STAGE II CONSTRUCTION INCLUDING ALL BITUMINOUS PAVEMENT EXCEPT SURFACE COURSE.

STAGE III HIGHWAY - WIDENING/RESURFACING

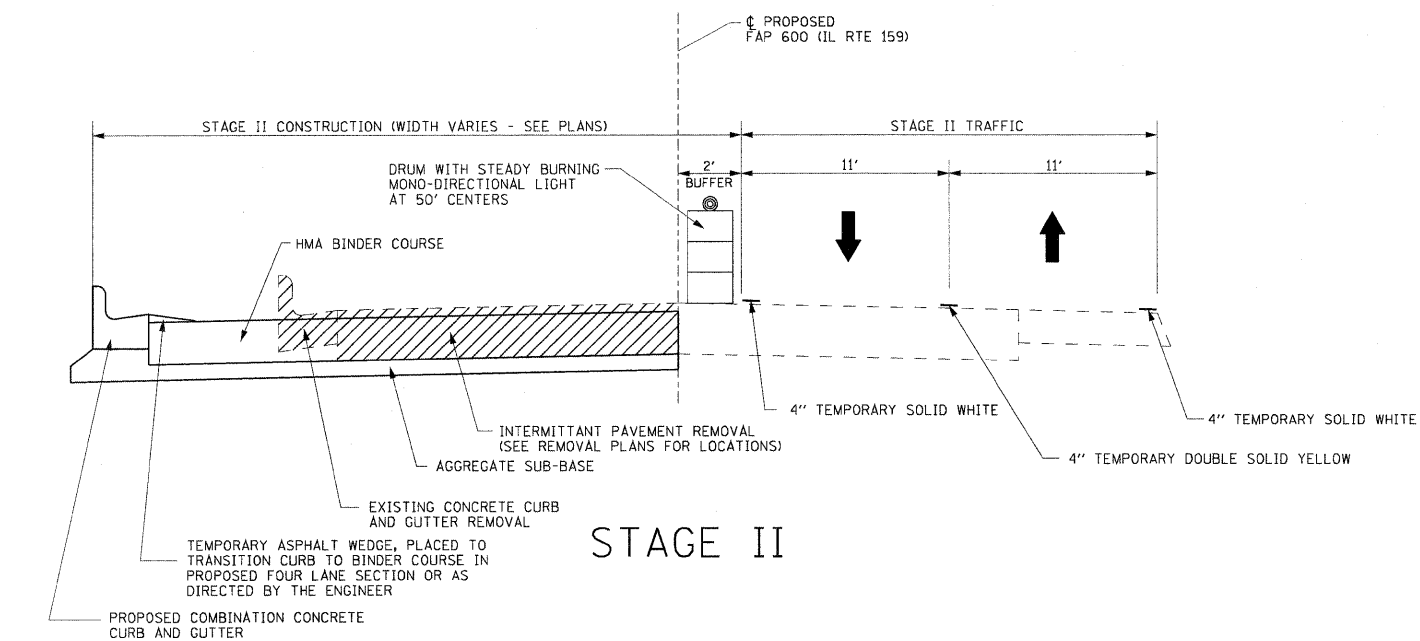
1. SHIFT TRAFFIC TO STAGE III TRAFFIC CONFIGURATION.
2. REMOVE REMAINING CURBS & GUTTERS AND SHOULDERS ON EAST HALF OF ROADWAY, ALLOWING ACCESS TO SIDEROADS AND ENTRANCES THROUGH PHASING OF PAVEMENT REMOVAL AND REPLACEMENT.
3. REMOVE SHORT TERM PAVEMENT PLACED IN STAGE I AND ORIGINAL PAVEMENT.
4. CONSTRUCT UTILITIES AS REQUIRED (INCLUDING STORM AND SANITARY SEWERS)
5. CONSTRUCT NEW CURB AND GUTTER AND DRAINAGE STRUCTURES TO PROPOSED ELEVATIONS.
6. PLACE HMA BINDER FOR WEST HALF OF PROPOSED ROADWAY PAVEMENT, ENTRANCES AND SIDEROADS, MAINTAINING TWO WAY TRAFFIC ON SIDEROADS OVERNIGHT, MAY REDUCE TO ONE LANE DURING CONSTRUCTION OPERATIONS. (SEE SPECIAL PROVISIONS)
7. ACCESS TO ENTRANCES SHALL BE MAINTAINED AT ALL TIMES EXCEPT WHERE NOTED.
8. STOP SIGNS AND STREET SIGNS AT SIDEROADS SHALL BE ADJUSTED AND MAINTAINED BY THE CONTRACTOR.
9. PROPER DRAINAGE SHALL BE MAINTAINED BY THE CONTRACTOR.
10. COMPLETE STAGE III CONSTRUCTION INCLUDING ALL BITUMINOUS PAVEMENT EXCEPT SURFACE COURSE.

STAGE IV HIGHWAY - SURFACE COURSE

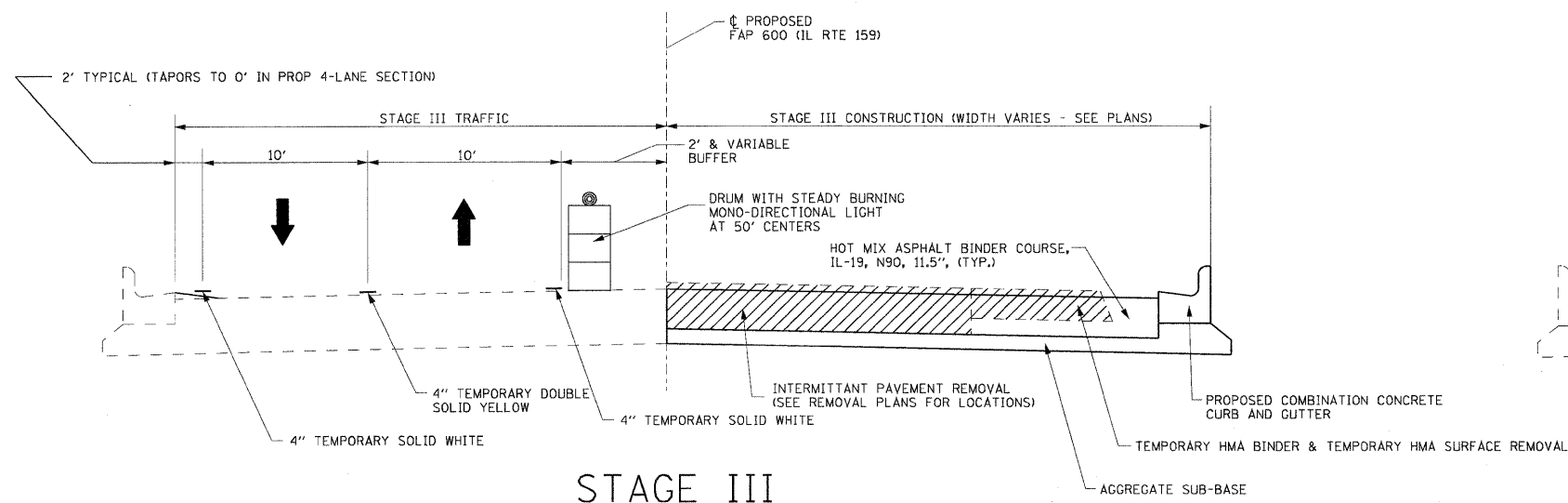
1. SURFACE COURSE SHALL NOT BE PLACED UNTIL ALL BINDER COURSE HAS BEEN PLACED FOR THE ENTIRE SECTION.
2. MAINTAIN TRAFFIC ON THE EXISTING PAVEMENT, RELOCATING TRAFFIC AS NECESSARY FOR PAVING OPERATIONS.
3. SURFACE COURSE AND FINAL PAVEMENT MARKINGS SHALL BE CONSTRUCTED UNDER TRAFFIC IN ACCORDANCE WITH STANDARD 701602.



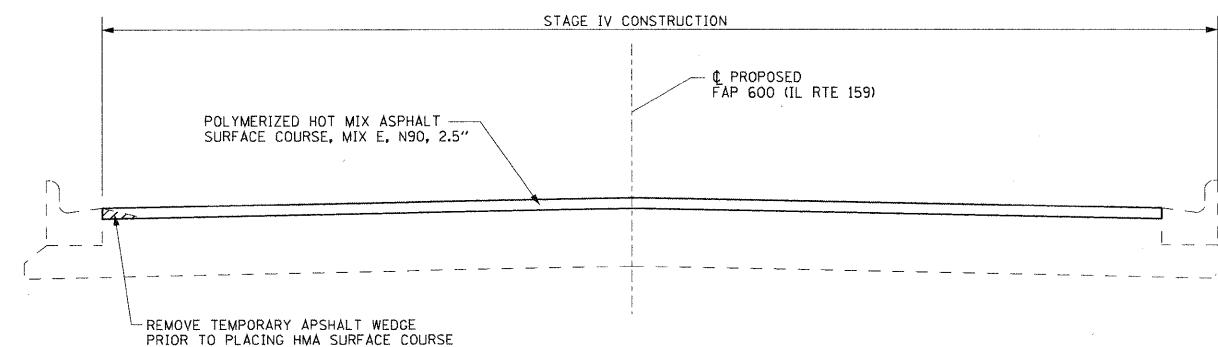
STAGE I



STAGE II



STAGE III



STAGE IV

FILE NAME = P:\Projects\51350\1\CA00\DN\0876830-sh	USER NAME = default staging1.dgn	DESIGNED -	REVISED -	STATE OF ILLINOIS DEPARTMENT OF TRANSPORTATION	SUGGESTED STAGES OF CONSTRUCTION AND TRAFFIC CONTROL TYPICAL SECTIONS	F.A.P. RTE. 600	SECTION 60-(30,31,128)-1	COUNTY MADISON/ST. CLAIR	TOTAL SHEETS 399	SHEET NO. 148	
PLOT SCALE = 5/8" = 1' / IN.	CHECKED -	REVISED -	SCALE: 1" = 50'			SHEET NO. 1 OF 6 SHEETS	STA. N/A	TO STA. N/A	FED. ROAD DIST. NO. ILLINOIS FED. AID PROJECT	CONTRACT NO. 76830	
PLOT DATE = 10/12/2009	DATE -	REVISED -									