

PART OF U.S. SURVEY 393 CLAIM 609 IN T.3N., R.8W., OF THE 3RD PM, MADISON COUNTY, ILLINOIS

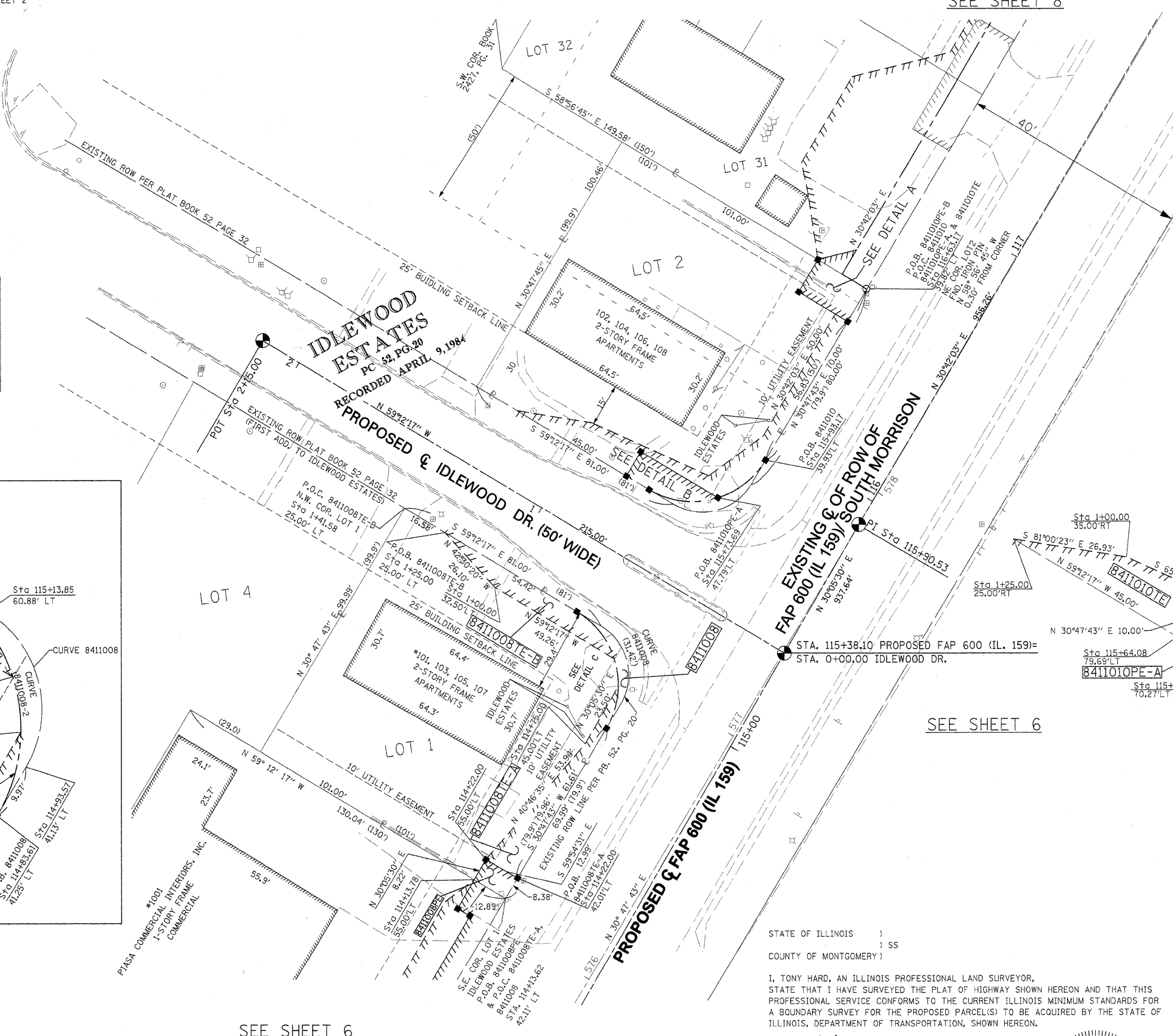
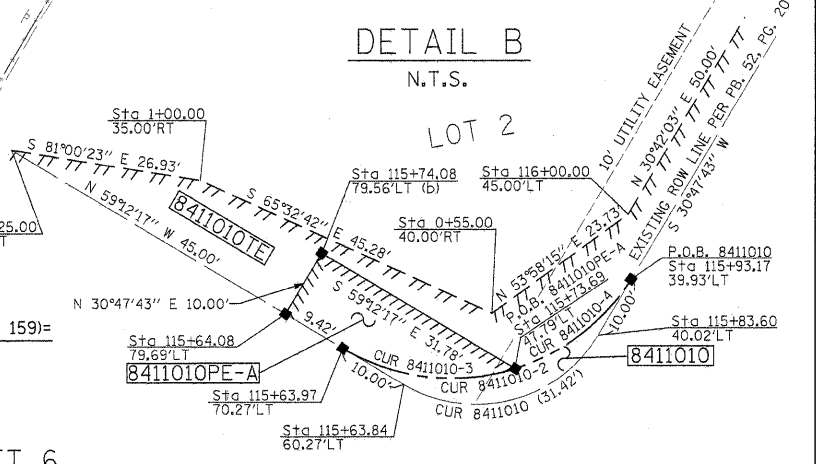
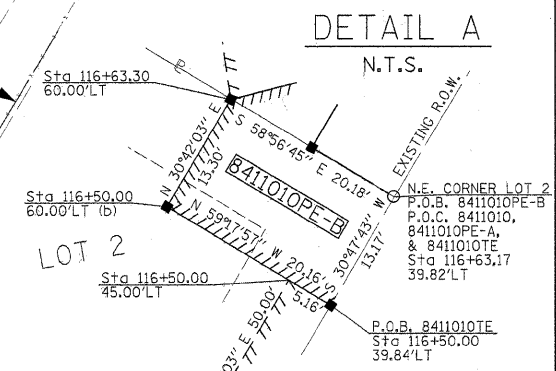
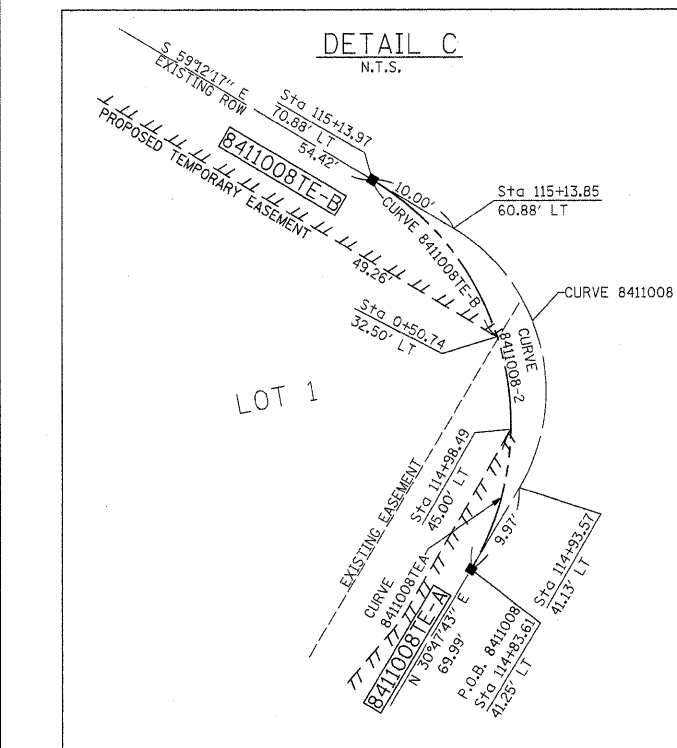
SEE BASIS OF COORDINATES AND BEARINGS STATEMENT ON SHEET 2

SEE SHEET 8

COORDINATE TABLE			
STATION	OFFSET	NORTH	EAST
114+22.00	42.01' LT	725,670.3773	348,579.5044
114+13.78	55.00' LT	725,669.7779	348,564.1418
114+22.00	55.00' LT	725,676.8910	348,568.2638
114+83.61	41.25' LT	725,723.3004	348,611.0469
115+13.97	70.88' LT	725,764.4296	348,600.6359
116+50.00	39.84' LT	725,866.6056	348,696.4578
116+50.00	60.00' LT	725,876.8995	348,679.1213
116+63.30	60.00' LT	725,888.3329	348,685.9102
116+63.17	39.82' LT	725,877.9208	348,703.2018
115+63.97	70.27' LT	725,807.3797	348,626.2345
115+93.17	39.93' LT	725,817.7906	348,667.3638
115+64.08	79.69' LT	725,812.2027	348,618.1423
115+74.08	79.56' LT	725,820.7928	348,623.2620
115+73.69	47.79' LT	725,804.5217	348,650.5621
106+52.89	PI	724,983.8610	348,230.2313
115+90.53	PI	725,795.1323	348,700.3499
115+38.10	PI	725,749.7700	348,674.0632
2+15.00	POT	725,859.8438	348,489.3777

SEE SHEET 46 FOR CONTROL POINTS WITH CROSSIES  
 (a) - SET DRILL HOLE WITH MAG NAIL  
 (b) - SET MAG NAIL OR LANDSCAPE NAIL

CURVE TABLE				
CURVE	LENGTH	RADIUS	CHORD	CHORD BEARING
8411008	31.45'	20.00'	28.31'	S 14°09'42" E
8411008-2	47.12'	30.00'	42.43'	N 14°12'17" W
8411008TE-A	15.53'	30.00'	15.36'	S 15°57'54" W
8411008TE-B	21.68'	30.00'	21.21'	S 38°30'00" E
8411010	31.42'	20.00'	28.28'	S 75°47'43" W
8411010-2	47.12'	30.00'	42.43'	N 75°47'43" E
8411010-3	25.23'	30.00'	24.49'	N 83°17'58" W
8411010-4	21.89'	30.00'	21.41'	S 51°42'01" W



**McDonough-Whitlow, P.C.**  
 Consulting Engineers & Land Surveyors  
 138 East Wood Street  
 Hillsboro, IL 62049  
 Phone: 217.532.9233  
 Fax: 217.532.6300  
 PROFESSIONAL DESIGN No. 184-002754

ILLINOIS DEPARTMENT OF TRANSPORTATION  
**PLAT OF HIGHWAYS**  
 FAP ROUTE 600 (IL 159)  
 SECTION 60-(30,31,128)-1  
 MADISON & ST. CLAIR COUNTY  
 JOB NO. R-98-011-04  
 STATION 114+00 TO STATION 116+75

SCALE: 1" = 20'

SHEET 7 OF 46

ILLINOIS DEPARTMENT OF TRANSPORTATION  
 DIVISION OF HIGHWAYS/REGION 5/DISTRICT 8  
 1102 EASTPORT PLAZA DRIVE  
 COLLINGSVILLE, ILLINOIS 62234-6198

F.A. R.T.E.	SECTION	COUNTY	TOTAL SHEETS	SHEET NO.
600	60-(30,31,128)-1	MADISON	399	188

COMPLETION DATE OF FIELD WORK PERFORMED: \_\_\_\_\_  
 LAND SURVEY: 10-11-05      ROW STAKING: 09-17-09      CONTRACT NO. 76830

STATE OF ILLINOIS )  
 COUNTY OF MONTGOMERY ) SS

I, TONY HARD, AN ILLINOIS PROFESSIONAL LAND SURVEYOR, STATE THAT I HAVE SURVEYED THE PLAT OF HIGHWAY SHOWN HEREON AND THAT THIS PROFESSIONAL SERVICE CONFORMS TO THE CURRENT ILLINOIS MINIMUM STANDARDS FOR A BOUNDARY SURVEY FOR THE PROPOSED PARCEL(S) TO BE ACQUIRED BY THE STATE OF ILLINOIS, DEPARTMENT OF TRANSPORTATION, SHOWN HEREON.

DATED October 5, 2009  
*Tony Hard*  
 TONY HARD, PLS NO. 2953



PARCEL NO.	OWNER	TOTAL HOLDING ACRES	FEE SIMPLE ACQUISITION				REMAINDER ACRES	EASEMENTS		PERMANENT TAX NUMBER	PROPERTY ACQUIRED BY
			GROSS ACRES	SQ. FT.	NET ACRES	SQ. FT.		PE = PERMANENT ACRES	TE = TEMPORARY SQ. FT.		
8411008	EQUITY INVESTMENT COMPANY, A PARTNERSHIP TITLE REPORT NO. MA-3421.0	0.2299	0.0025	107	0.0025	107	0.2274	PE 0.0025 TE-A 0.0117 TE-B 0.0096	107 511 416	GRADING, DRAINAGE CONSTRUCTION & MAINTENANCE GRADING GRADING	13-2-21-33-20-401-032
8411010	EQUITY INVESTMENT COMPANY, A PARTNERSHIP TITLE REPORT NO. MA-3421.0	0.2304	0.0025	107	0.0025	107	0.2279	PE-A 0.0057 PE-B 0.0061 TE 0.0214	249 267 930	STORM SEWER CONSTRUCTION & MAINTENANCE, AND GRADING GRADING, DRAINAGE CONSTRUCTION & MAINTENANCE GRADING	13-2-21-33-20-401-031