

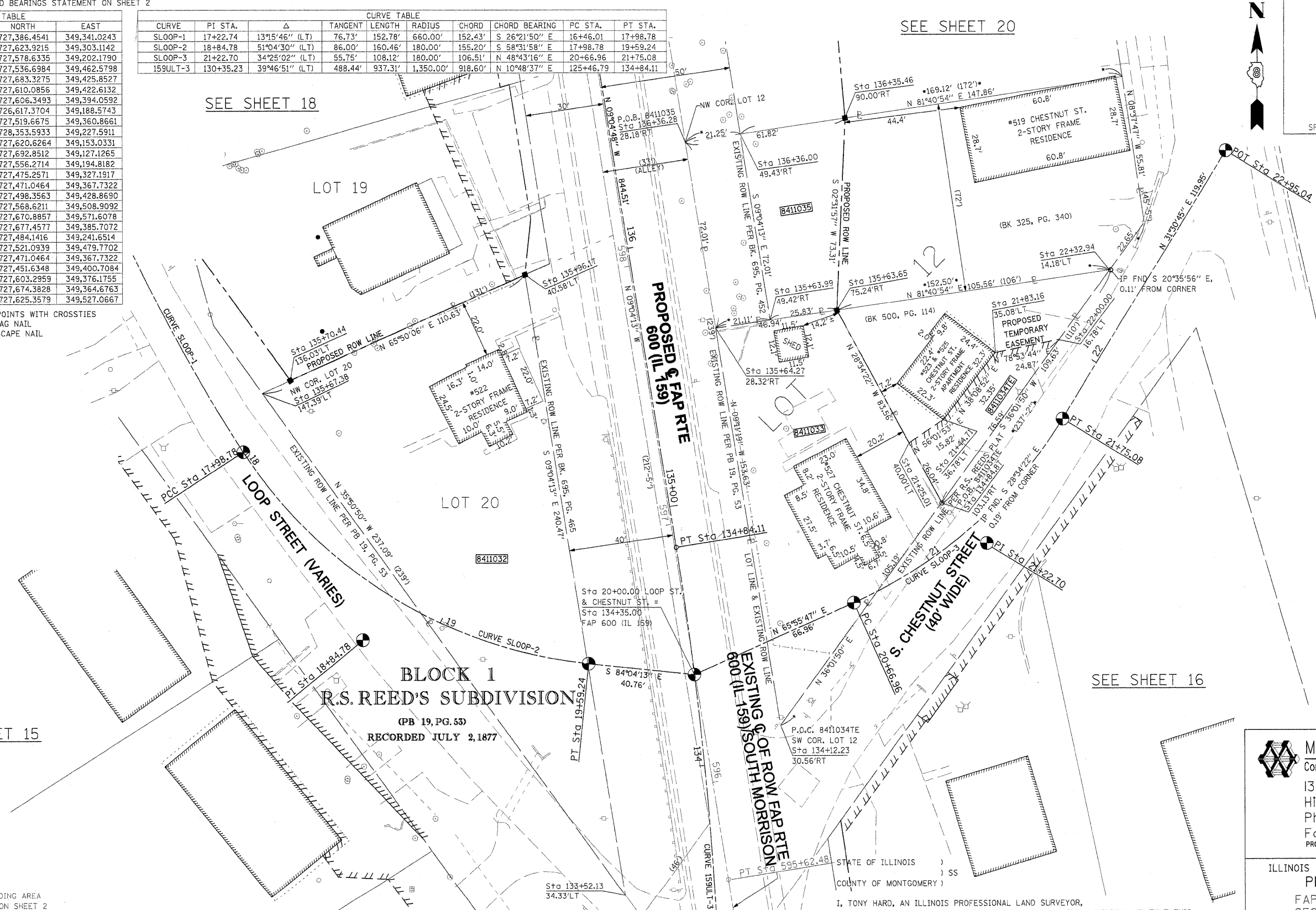
PART OF THE SW 14 OF SECTION 34, T3N, R8W, OF THE 3RD PM, MADISON COUNTY, ILLINOIS

SEE BASIS OF COORDINATES AND BEARINGS STATEMENT ON SHEET 2

COORDINATE TABLE			
STATION	OFFSET	NORTH	EAST
133+52.13	34.33' LT	727,386.4541	349,341.0243
135+96.17	40.58' LT	727,623.9215	349,303.1142
135+67.38	147.39' LT	727,578.6335	349,202.1790
134+84.87	103.13' RT	727,536.6984	349,462.5798
136+35.46	90.00' RT	727,683.3275	349,425.8527
135+63.65	75.24' RT	727,610.0856	349,422.6132
135+63.99	49.42' RT	727,606.3493	349,394.0592
125+46.79	PC	726,617.3704	349,188.5743
134+84.11	PT	727,519.6675	349,360.8661
143+28.62	PC	728,353.5933	349,227.5911
17+22.74	PI	727,620.6264	349,153.0331
16+46.01	PC	727,692.8512	349,127.1265
17+98.78	PCC	727,556.2714	349,194.8182
19.59.24	PT	727,475.2571	349,327.1917
20+00.00	PI	727,471.0464	349,367.7322
20+66.96	PC	727,498.3563	349,428.8690
21+75.08	PT	727,568.6211	349,508.9092
22+95.04	PI	727,670.8857	349,571.6078
136+36.00	49.43' RT	727,677.4577	349,385.7072
18+84.78	PI	727,484.1416	349,241.6514
21+22.70	PI	727,521.0939	349,479.7702
20+00.00	C-C	727,471.0464	349,367.7322
134+12.23	30.56' RT	727,451.6348	349,400.7084
135+64.27	28.32' RT	727,603.2959	349,376.1755
136+36.28	28.18' RT	727,674.3828	349,364.6763
22+32.94	14.18' LT	727,625.3579	349,527.0667

CURVE TABLE										
CURVE	PI STA.	Δ	TANGENT	LENGTH	RADIUS	CHORD	CHORD BEARING	PC STA.	PT STA.	
SLOOP-1	17+22.74	13°15'46" (LT)	76.73'	152.78'	660.00'	152.43'	S 26°21'50" E	16+46.01	17+98.78	
SLOOP-2	18+84.78	51°04'30" (LT)	86.00'	160.46'	180.00'	155.20'	S 58°31'58" E	17+98.78	19+59.24	
SLOOP-3	21+22.70	34°25'02" (LT)	55.75'	108.12'	180.00'	106.51'	N 48°43'16" E	20+66.96	21+75.08	
159ULT-3	130+35.23	39°46'51" (LT)	488.44'	937.31'	1,350.00'	918.60'	N 10°48'37" E	125+46.79	134+84.11	

SEE SHEET 46 FOR CONTROL POINTS WITH CROSSIES
 (a) - SET DRILL HOLE WITH MAG NAIL
 (b) - SET MAG NAIL OR LANDSCAPE NAIL

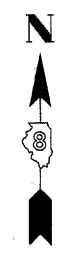


SEE SHEET 15

SEE SHEET 18

SEE SHEET 20

SEE SHEET 16



SPACE RESERVED FOR RECORDING OFFICER

* SEE TOTAL HOLDING AREA SOURCE TABLE ON SHEET 2

PARCEL NO.	OWNER	TOTAL HOLDING ACRES	GROSS		FEE SIMPLE ACQUISITION		NET			REMAINDER		EASEMENTS		PERMANENT TAX NUMBER	PROPERTY ACQUIRED BY
			ACRES	SQ. FT.	PREVIOUSLY DEDICATED ACRES	AND/OR USED SQ. FT.	ACRES	SQ. FT.	ACRES	SQ. FT.	ACRES	SQ. FT.	PE = PERMANENT		
8411032	JOHN H. SCHEURER, JR. TITLE REPORT NO. MA-3442.0	0.2948	0.2948	12,843	-	-	0.2948	12,843	0	-	-	-	-	13-2-21-34-13-301-005	
8411033	LANA M. MUSHILL & RAYMOND A. MUSHILL HER SPOUSE, AS TENANTS IN COMMON TITLE REPORT NO. MA-3434.0	0.1739	0.1739	7,575	-	-	0.1739	7,575	0	-	-	-	-	13-2-21-34-13-302-004	
8411034	OSBORN & OSBORN, LLC TITLE REPORT NO. MA-4130.0	0.0950	-	-	-	-	-	-	0.0950	TE 0.0267	1.161	ENTRANCE CONSTRUCTION & GRADING	-	13-2-21-34-13-302-005	
8411035	CHRISTOPHER HABERMEHL & BETH HABERMEHL, AS JOINT TENANTS TITLE REPORT NO. MA-3435.0	0.2760	0.0899	3,915	0.0350	1,525	0.0549	2,390	0.1861	-	-	-	13-2-21-34-13-302-006		

STATE OF ILLINOIS)
 COUNTY OF MONTGOMERY) SS

I, TONY HARD, AN ILLINOIS PROFESSIONAL LAND SURVEYOR, STATE THAT I HAVE SURVEYED THE PLAT OF HIGHWAY SHOWN HEREON AND THAT THIS PROFESSIONAL SERVICE CONFORMS TO THE CURRENT ILLINOIS MINIMUM STANDARDS FOR A BOUNDARY SURVEY FOR THE PROPOSED PARCEL(S) TO BE ACQUIRED BY THE STATE OF ILLINOIS, DEPARTMENT OF TRANSPORTATION, SHOWN HEREON.

DATED October 5, 2009
 Tony Hard
 TONY HARD, PLS NO. 2953



(License Expires: 11/30/10)

McDonough-Whitlow, P.C.
 Consulting Engineers & Land Surveyors
 138 East Wood Street
 Hillsboro, IL 62049
 Phone: 217.532.9233
 Fax: 217.532.6300
 PROFESSIONAL DESIGN No. 184-002754

ILLINOIS DEPARTMENT OF TRANSPORTATION
 PLAT OF HIGHWAYS
 FAP ROUTE 600 (IL 159)
 SECTION 60-(30,31,128)-1
 MADISON COUNTY
 JOB NO. R-98-011-04
 STATION 133+50 TO STATION 136+50

SCALE: 1" = 20'

SHEET 17 OF 46

F.A.P. R.T.E.	SECTION	COUNTY	TOTAL SHEETS	SHEET NO.
600	60-(30,31,128)-1	MADISON	399	198

COMPLETION DATE OF FIELD WORK PERFORMED
 LAND SURVEY: 10-11-05 ROW STAKING: 09-17-09

FED. ROAD DIST. NO. ILLINOIS FED. AID PROJECT

CONTRACT NO. 76830