

PART OF THE SW 14 OF SECTION 34, T3N, R8W, OF THE 3RD PM, MADISON COUNTY, ILLINOIS

SEE BASIS OF COORDINATES AND BEARINGS STATEMENT ON SHEET 2

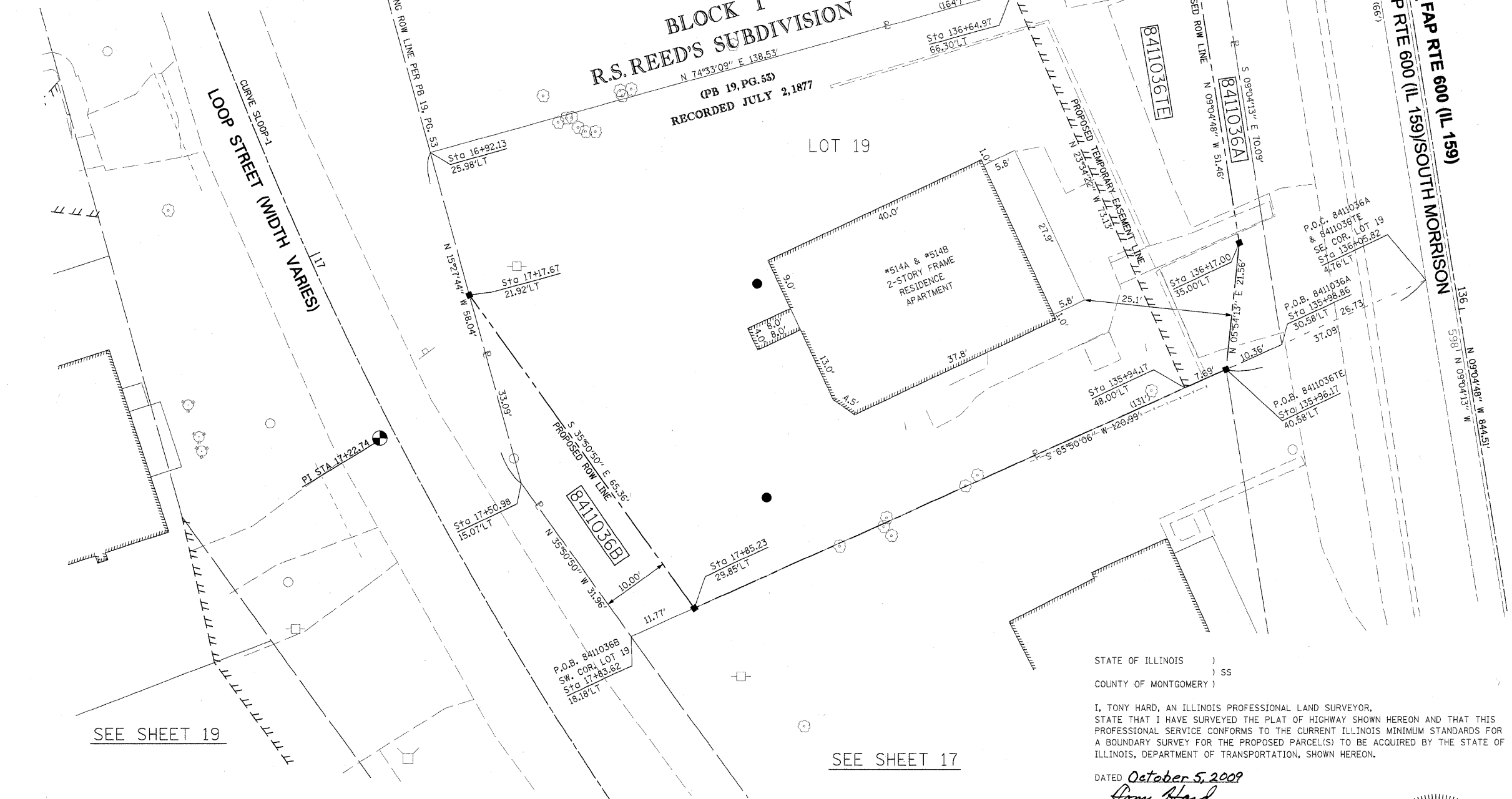
COORDINATE TABLE			
STATION	OFFSET	NORTH	EAST
135+98.86	30.58' LT	727,628.1614	349,312.5640
135+96.17	40.58' LT	727,623.9215	349,303.1142
135+94.17	48.00' LT	727,620.7741	349,296.0995
136+17.00	35.00' LT	727,645.3719	349,305.3323
136+64.97	66.30' LT	727,687.7993	349,266.8548
136+68.06	38.56' LT	727,695.2328	349,293.7552
136+68.46	35.00' LT	727,696.1878	349,297.2111
136+68.96	30.56' LT	727,697.3769	349,301.5142
17+83.62	18.18' LT	727,578.6335	349,202.1790
17+50.98	15.07' LT	727,604.5413	349,183.4611
17+17.67	21.92' LT	727,636.4311	349,174.6400
17+85.23	29.85' LT	727,583.4513	349,212.9167
143+28.62	PC	728,353.5933	349,227.5911
134+84.11	PT	727,519.6675	349,360.8661
16+46.01	PC	727,692.8512	349,127.1265
17+98.78	PT	727,556.2714	349,194.8182
17+22.74	PI	727,620.6264	349,153.0331
16+92.13	25.98' LT	727,660.4786	349,167.9881

CURVE SLOOP-1
 PI Sta = 17+22.74
 $\Delta = 13^\circ 15' 46''$ (L.T.)
 T = 76.73'
 L = 152.78'
 R = 660.00'
 C = 152.43'
 CB = S 26° 21' 50" E
 PC Sta = 16+46.01
 PT Sta = 17+98.78



SPACE RESERVED FOR RECORDING OFFICER

SEE SHEET 46 FOR CONTROL POINTS WITH CROSSIES
 (a) - SET DRILL HOLE WITH MAG NAIL
 (b) - SET MAG NAIL OR LANDSCAPE NAIL



SEE SHEET 21

SEE SHEET 20

SEE SHEET 19

SEE SHEET 17

STATE OF ILLINOIS)
) SS
 COUNTY OF MONTGOMERY)

I, TONY HARD, AN ILLINOIS PROFESSIONAL LAND SURVEYOR, STATE THAT I HAVE SURVEYED THE PLAT OF HIGHWAY SHOWN HEREON AND THAT THIS PROFESSIONAL SERVICE CONFORMS TO THE CURRENT ILLINOIS MINIMUM STANDARDS FOR A BOUNDARY SURVEY FOR THE PROPOSED PARCEL(S) TO BE ACQUIRED BY THE STATE OF ILLINOIS, DEPARTMENT OF TRANSPORTATION, SHOWN HEREON.

DATED October 5, 2009
Tony Hard
 TONY HARD, PLS NO. 2953



McDonough-Whitlow, P.C.
 Consulting Engineers & Land Surveyors
 138 East Wood Street
 Hillsboro, IL 62049
 Phone: 217.532.9233
 Fax: 217.532.6300
 PROFESSIONAL DESIGN NO. 184-002754

ILLINOIS DEPARTMENT OF TRANSPORTATION
PLAT OF HIGHWAYS
 FAP ROUTE 600 (IL 159)
 SECTION 60-(30,31,128)-1
 MADISON COUNTY
 JOB NO. R-98-011-04
 STATION 135+75 TO STATION 136+75 FAP 600 (IL 159)

SCALE: 1" = 10'

SHEET 18 OF 46

ILLINOIS DEPARTMENT OF TRANSPORTATION
 DIVISION OF HIGHWAYS/REGION 5/DISTRICT 8
 1102 EASTPORT PLAZA DRIVE
 COLLINSVILLE, ILLINOIS 62234-6198

F.A.P. RTE.	SECTION	COUNTY	TOTAL SHEETS	SHEET NO.
600	60-(30,31,128)-1	MADISON	399	199

COMPLETION DATE OF FIELD WORK PERFORMED
 LAND SURVEY: 10-11-05 ROW STAKING: 09-17-09

FED. ROAD DIST. NO. ILLINOIS FED. AID PROJECT

* SEE TOTAL HOLDING AREA SOURCE TABLE ON SHEET 2

PARCEL NO.	OWNER	TOTAL HOLDING ACRES	FEE SIMPLE ACQUISITION				EASEMENTS				PERMANENT TAX NUMBER	PROPERTY ACQUIRED BY		
			GROSS ACRES	PREVIOUSLY DEDICATED ACRES	NET ACRES	REMAINDER ACRES	PE = PERMANENT TE = TEMPORARY ACRES	EASEMENT PURPOSE						
8411036	LYLE BUETTNER & CHRISTINE BUETTNER, AS JOINT TENANTS TITLE REPORT NO. MA-3443.0	0.2413	A 0.0084 B 0.0129	A 366 B 561	-	-	A 0.0084 B 0.0129	A 366 B 561	0.2200	TE 0.0355	1,546	TE GRADING, ENTRANCE & SIDEWALK CONSTRUCTION	13-2-21-34-13-301-004	