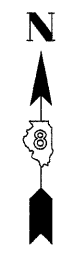
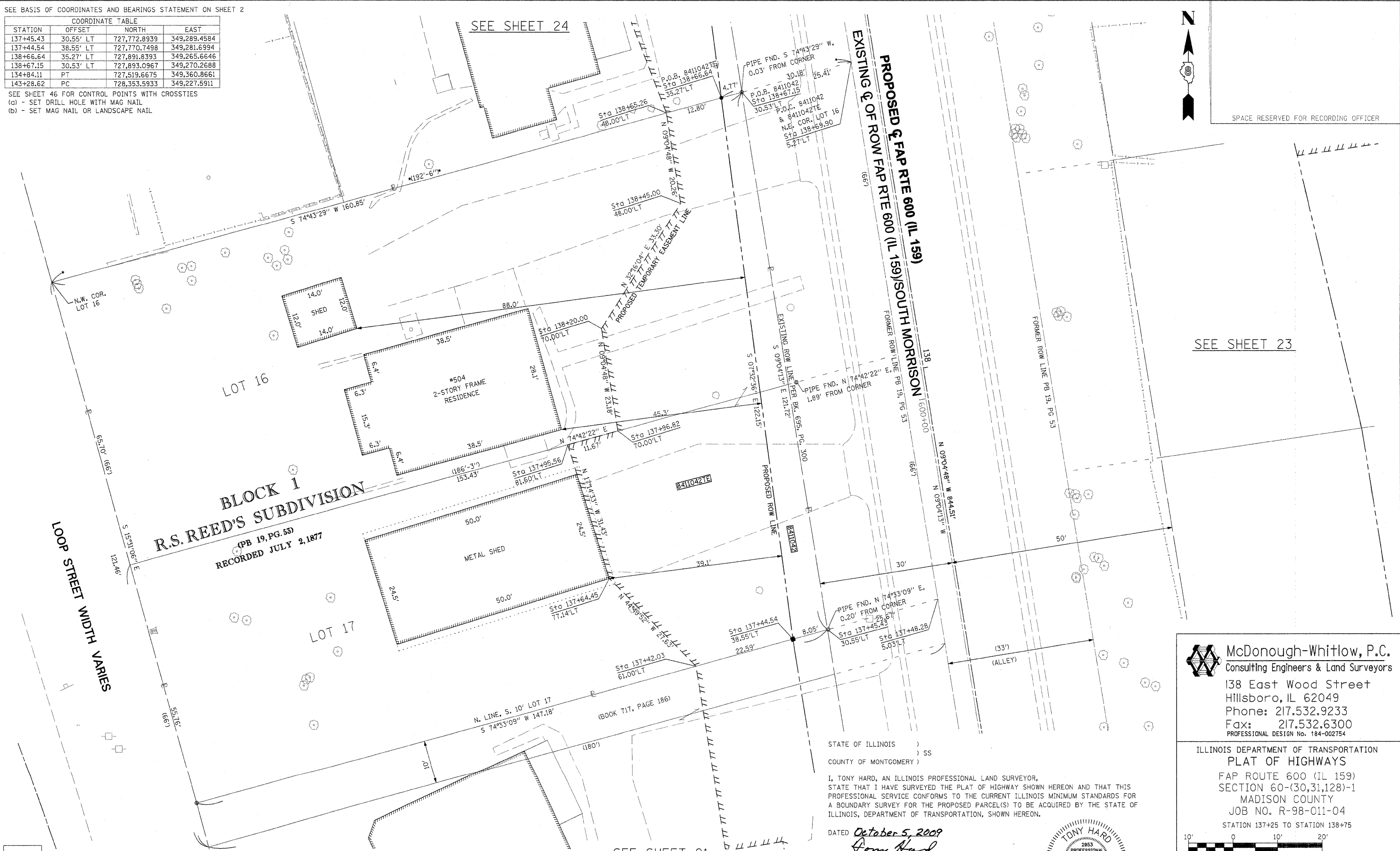


PART OF THE SW & NW 14 OF SECTION 34, T3N, R8W, OF THE 3RD PM, MADISON COUNTY, ILLINOIS

SEE BASIS OF COORDINATES AND BEARINGS STATEMENT ON SHEET 2

COORDINATE TABLE			
STATION	OFFSET	NORTH	EAST
137+45.43	30.55' LT	727,772.8939	349,289.4584
137+44.54	38.55' LT	727,770.7498	349,281.6994
138+66.64	35.27' LT	727,891.8393	349,265.6646
138+67.15	30.53' LT	727,893.0967	349,270.2688
134+84.11	PT	727,519.6675	349,360.8661
143+28.62	PC	728,353.5933	349,227.5911

SEE SHEET 46 FOR CONTROL POINTS WITH CROSSTIES
 (a) - SET DRILL HOLE WITH MAG NAIL
 (b) - SET MAG NAIL OR LANDSCAPE NAIL



SPACE RESERVED FOR RECORDING OFFICER

SEE SHEET 23

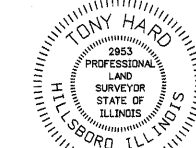
SEE SHEET 21

* SEE TOTAL HOLDING AREA SOURCE TABLE ON SHEET 2

PARCEL NO.	OWNER	TOTAL HOLDING ACRES	GROSS		NET		REMAINDER ACRES	EASEMENTS		PERMANENT TAX NUMBER	PROPERTY ACQUIRED BY
			ACRES	SQ. FT.	ACRES	SQ. FT.		PE = PERMANENT ACRES	TE = TEMPORARY SQ. FT.		
8411042	WILLIAM O. LAMPRECHT TITLE REPORT NO. MA-3557.0 & MA-3558.0	0.4286	0.0178	776	0.0178	776	0.4108	TE 0.0828	3,609	13-2-21-34-13-301-001	

STATE OF ILLINOIS)
 COUNTY OF MONTGOMERY) SS
 I, TONY HARD, AN ILLINOIS PROFESSIONAL LAND SURVEYOR,
 STATE THAT I HAVE SURVEYED THE PLAT OF HIGHWAY SHOWN HEREON AND THAT THIS
 PROFESSIONAL SERVICE CONFORMS TO THE CURRENT ILLINOIS MINIMUM STANDARDS FOR
 A BOUNDARY SURVEY FOR THE PROPOSED PARCEL(S) TO BE ACQUIRED BY THE STATE OF
 ILLINOIS, DEPARTMENT OF TRANSPORTATION, SHOWN HEREON.

DATED October 5, 2009
Tony Hard
 TONY HARD, PLS NO. 2953



McDonough-Whitlow, P.C.
 Consulting Engineers & Land Surveyors
 138 East Wood Street
 Hillsboro, IL 62049
 Phone: 217.532.9233
 Fax: 217.532.6300
 PROFESSIONAL DESIGN No. 184-002754

ILLINOIS DEPARTMENT OF TRANSPORTATION
 PLAT OF HIGHWAYS
 FAP ROUTE 600 (IL 159)
 SECTION 60-(30,31,128)-1
 MADISON COUNTY
 JOB NO. R-98-011-04
 STATION 137+25 TO STATION 138+75

SCALE: 1" = 10'
 SHEET 22 OF 46

F.A.P. RTE.	SECTION	COUNTY	TOTAL SHEET NO.
600	60-(30,31,128)-1	MADISON	399 203

COMPLETION DATE OF FIELD WORK PERFORMED
 LAND SURVEY: 10-11-05 ROW STAKING: 09-17-09
 FED. ROAD DIST. NO. ILLINOIS FED. AID PROJECT