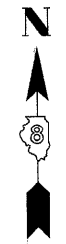
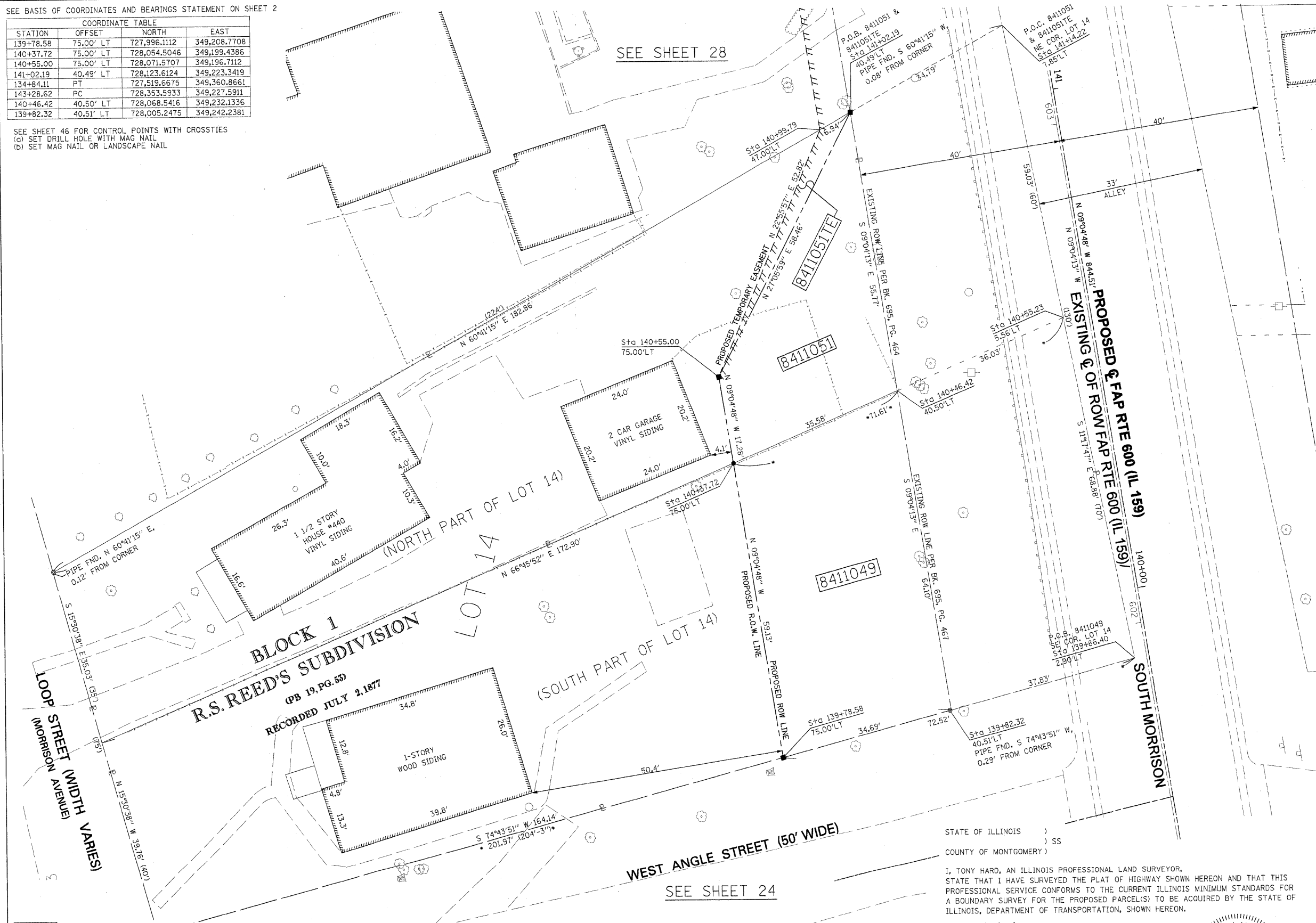


PART OF THE NW 14 OF SECTION 34, T3N, R8W, OF THE 3RD PM, MADISON COUNTY, ILLINOIS

SEE BASIS OF COORDINATES AND BEARINGS STATEMENT ON SHEET 2

| COORDINATE TABLE | | | |
|------------------|-----------|--------------|--------------|
| STATION | OFFSET | NORTH | EAST |
| 139+78.58 | 75.00' LT | 727,996.1112 | 349,208.7708 |
| 140+37.72 | 75.00' LT | 728,054.5046 | 349,199.4386 |
| 140+55.00 | 75.00' LT | 728,071.5707 | 349,196.7112 |
| 141+02.19 | 40.49' LT | 728,123.6124 | 349,223.3419 |
| 134+84.11 | PT | 727,519.6675 | 349,360.8661 |
| 143+28.62 | PC | 728,353.5933 | 349,227.5911 |
| 140+46.42 | 40.50' LT | 728,068.5416 | 349,232.1336 |
| 139+82.32 | 40.51' LT | 728,005.2475 | 349,242.2381 |

SEE SHEET 46 FOR CONTROL POINTS WITH CROSSIES
 (a) SET DRILL HOLE WITH MAG NAIL
 (b) SET MAG NAIL OR LANDSCAPE NAIL



SPACE RESERVED FOR RECORDING OFFICER

SEE SHEET 25

WEST ANGLE STREET (50' WIDE)
 SEE SHEET 24

STATE OF ILLINOIS)
 COUNTY OF MONTGOMERY) SS

I, TONY HARD, AN ILLINOIS PROFESSIONAL LAND SURVEYOR, STATE THAT I HAVE SURVEYED THE PLAT OF HIGHWAY SHOWN HEREON AND THAT THIS PROFESSIONAL SERVICE CONFORMS TO THE CURRENT ILLINOIS MINIMUM STANDARDS FOR A BOUNDARY SURVEY FOR THE PROPOSED PARCEL(S) TO BE ACQUIRED BY THE STATE OF ILLINOIS, DEPARTMENT OF TRANSPORTATION, SHOWN HEREON.

DATED *October 5, 2009*
Tony Hard
 TONY HARD, PLS NO. 2953



McDonough-Whitlow, P.C.
 Consulting Engineers & Land Surveyors
 138 East Wood Street
 Hillsboro, IL 62049
 Phone: 217.532.9233
 Fax: 217.532.6300
 PROFESSIONAL DESIGN NO. 184-002754

ILLINOIS DEPARTMENT OF TRANSPORTATION
 PLAT OF HIGHWAYS
 FAP ROUTE 600 (IL 159)
 SECTION 60-(30,31,128)-1
 MADISON COUNTY
 JOB NO. R-98-011-04
 STATION 139+75 TO STATION 141+25

SCALE: 1" = 10'
 SHEET 26 OF 46

ILLINOIS DEPARTMENT OF TRANSPORTATION
 DIVISION OF HIGHWAYS/REGION 5/DISTRICT 8
 1102 EASTPORT PLAZA DRIVE
 COLLINGSVILLE, ILLINOIS 62234-6198

| F.A.P. RTE. | SECTION | COUNTY | TOTAL SHEETS | SHEET NO. |
|-------------|------------------|---------|--------------|-----------|
| 600 | 60-(30,31,128)-1 | MADISON | 399 | 207 |

CONTRACT NO. 76830

* SEE TOTAL HOLDING AREA SOURCE TABLE ON SHEET 2

| PARCEL NO. | OWNER | TOTAL HOLDING ACRES | GROSS | | FEE SIMPLE ACQUISITION PREVIOUSLY DEDICATED AND/OR USED | | NET | | REMAINDER ACRES | EASEMENTS | | PERMANENT TAX NUMBER | PROPERTY ACQUIRED BY |
|------------|--|---------------------|--------|---------|---|---------|--------|---------|-----------------|----------------|----------------|----------------------|-----------------------|
| | | | ACRES | SQ. FT. | ACRES | SQ. FT. | ACRES | SQ. FT. | | PE = PERMANENT | TE = TEMPORARY | | |
| 8411049 | MATTHEW CONNER & ROGER A. CONNER, AS JOINT TENANTS TITLE REPORT NO. MA-3578.0 | 0.2538 | 0.1043 | 4,544 | 0.0555 | 2,419 | 0.0488 | 2,125 | 0.1495 | TE 0.0026 | 112 | GRADING | 13-2-21-34-09-101-014 |
| 8411051 | WALTER W. OGLE TITLE REPORT NO. MA-3579.0 | 0.1787 | 0.0289 | 1,260 | 0 | 0 | 0.0289 | 1,260 | 0.1498 | TE 0.0026 | 112 | GRADING | 13-2-21-34-09-101-013 |