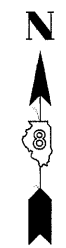


PART OF THE NW 14 OF SECTION 34, T3N, R8W, OF THE 3RD PM, MADISON COUNTY, ILLINOIS

SEE SHEET 29

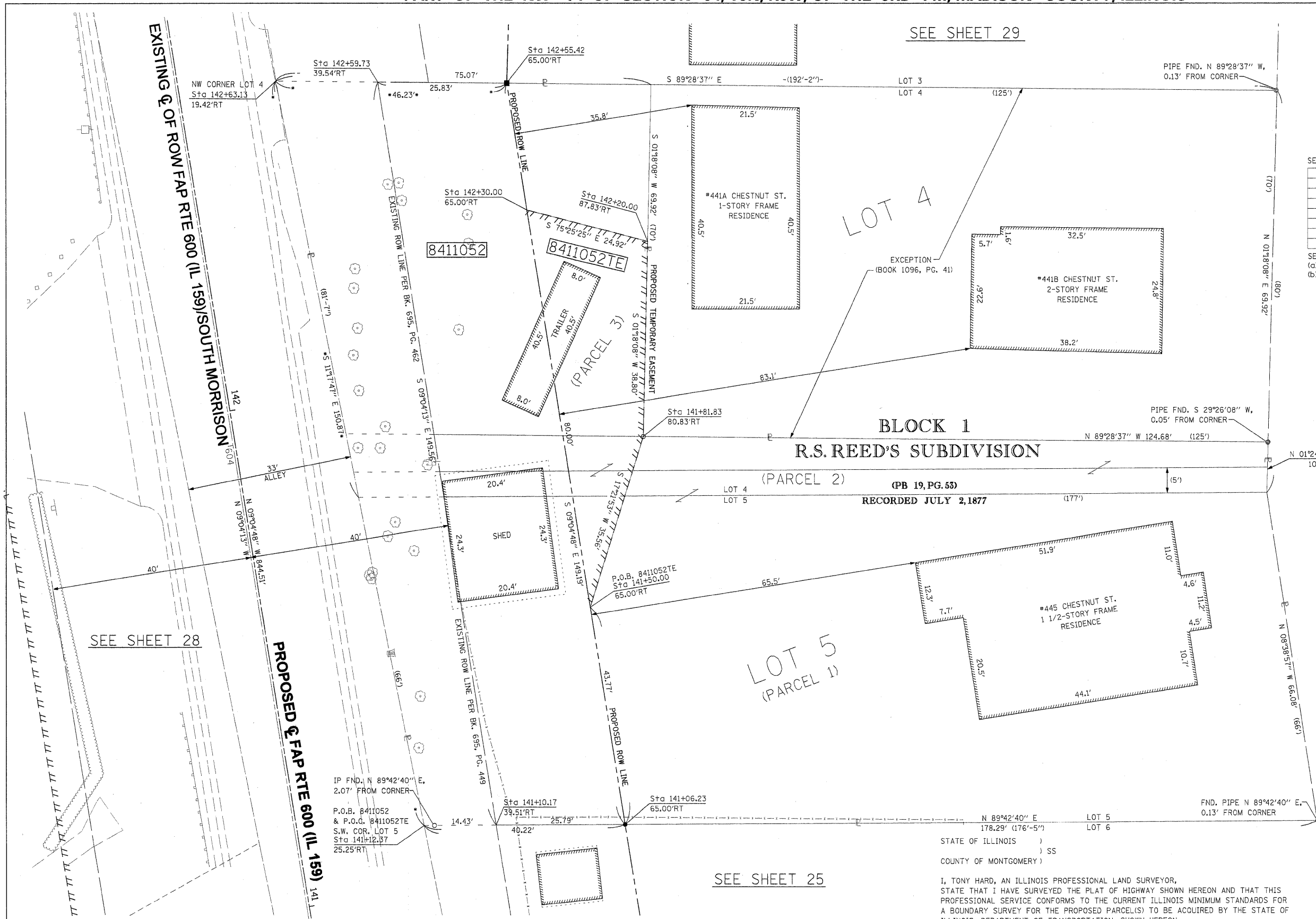


SPACE RESERVED FOR RECORDING OFFICER

SEE BASIS OF COORDINATES AND BEARINGS STATEMENT ON SHEET 2

STATION	OFFSET	NORTH	EAST
141+10.17	39.51' RT	728,144.1183	349,301.0813
141+06.23	65.00' RT	728,144.2483	349,326.8727
142+55.42	65.00' RT	728,291.5712	349,303.3281
142+59.73	39.54' RT	728,291.8070	349,277.5038
134+84.11	PT	727,519.6675	349,360.8661
143+28.62	PC	728,353.5933	349,227.5911

SEE SHEET 46 FOR CONTROL POINTS WITH CROSSIES
 (a) - SET DRILL HOLE WITH MAG NAIL
 (b) - SET MAG NAIL OR LANDSCAPE NAIL



CHESTNUT STREET (WIDTH VARIES)

SEE SHEET 28

SEE SHEET 25

BLOCK 1
R.S. REED'S SUBDIVISION

(PB 19, PG. 53)
RECORDED JULY 2, 1877

STATE OF ILLINOIS)
) SS
COUNTY OF MONTGOMERY)

I, TONY HARD, AN ILLINOIS PROFESSIONAL LAND SURVEYOR,
STATE THAT I HAVE SURVEYED THE PLAT OF HIGHWAY SHOWN HEREON AND THAT THIS
PROFESSIONAL SERVICE CONFORMS TO THE CURRENT ILLINOIS MINIMUM STANDARDS FOR
A BOUNDARY SURVEY FOR THE PROPOSED PARCEL(S) TO BE ACQUIRED BY THE STATE OF
ILLINOIS, DEPARTMENT OF TRANSPORTATION, SHOWN HEREON.

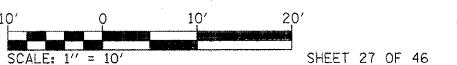
DATED October 5, 2009
Tony Hard
TONY HARD, PLS NO. 2953



(License Expires: 11/30/10)

McDonough-Whitlow, P.C.
Consulting Engineers & Land Surveyors
138 East Wood Street
Hillsboro, IL 62049
Phone: 217.532.9233
Fax: 217.532.6300
PROFESSIONAL DESIGN NO. 184-002754

ILLINOIS DEPARTMENT OF TRANSPORTATION
PLAT OF HIGHWAYS
FAP ROUTE 600 (IL 159)
SECTION 60-(30,31,128)-1
MADISON COUNTY
JOB NO. R-98-011-04
STATION 141+00 TO STATION 142+75



ILLINOIS DEPARTMENT OF TRANSPORTATION
DIVISION OF HIGHWAYS/REGION 5/DISTRICT 8
1102 EASTPORT PLAZA DRIVE
COLLINGSVILLE, ILLINOIS 62234-6198

F.A.P. RTE.	SECTION	COUNTY	TOTAL SHEETS	SHEET NO.
600	60-(30,31,128)-1	MADISON	399	208

COMPLETION DATE OF FIELD WORK PERFORMED
 LAND SURVEY: 10-11-05 ROW STAKING: 09-17-09 CONTRACT NO. 76830

* SEE TOTAL HOLDING AREA SOURCE TABLE ON SHEET 2

PARCEL NO.	OWNER	TOTAL HOLDING		GROSS		FEE SIMPLE ACQUISITION PREVIOUSLY DEDICATED AND/OR USED		NET		REMAINDER	EASEMENTS		PERMANENT TAX NUMBER	PROPERTY ACQUIRED BY
		ACRES	SQ. FT.	ACRES	SQ. FT.	ACRES	SQ. FT.	ACRES	SQ. FT.		ACRES	SQ. FT.		
8411052	EDWARD C. PACEWIC & LETHA J. PACEWIC, HIS WIFE, AS JOINT TENANTS TITLE REPORT NO. MA-3562.0	0.4253	0,1464	6,379	0.0591	2,573	0.0873	3,806	0.2789	TE 0.0253	1,104	BUILDING REMOVAL & GRADING	13-2-21-34-09-102-005	