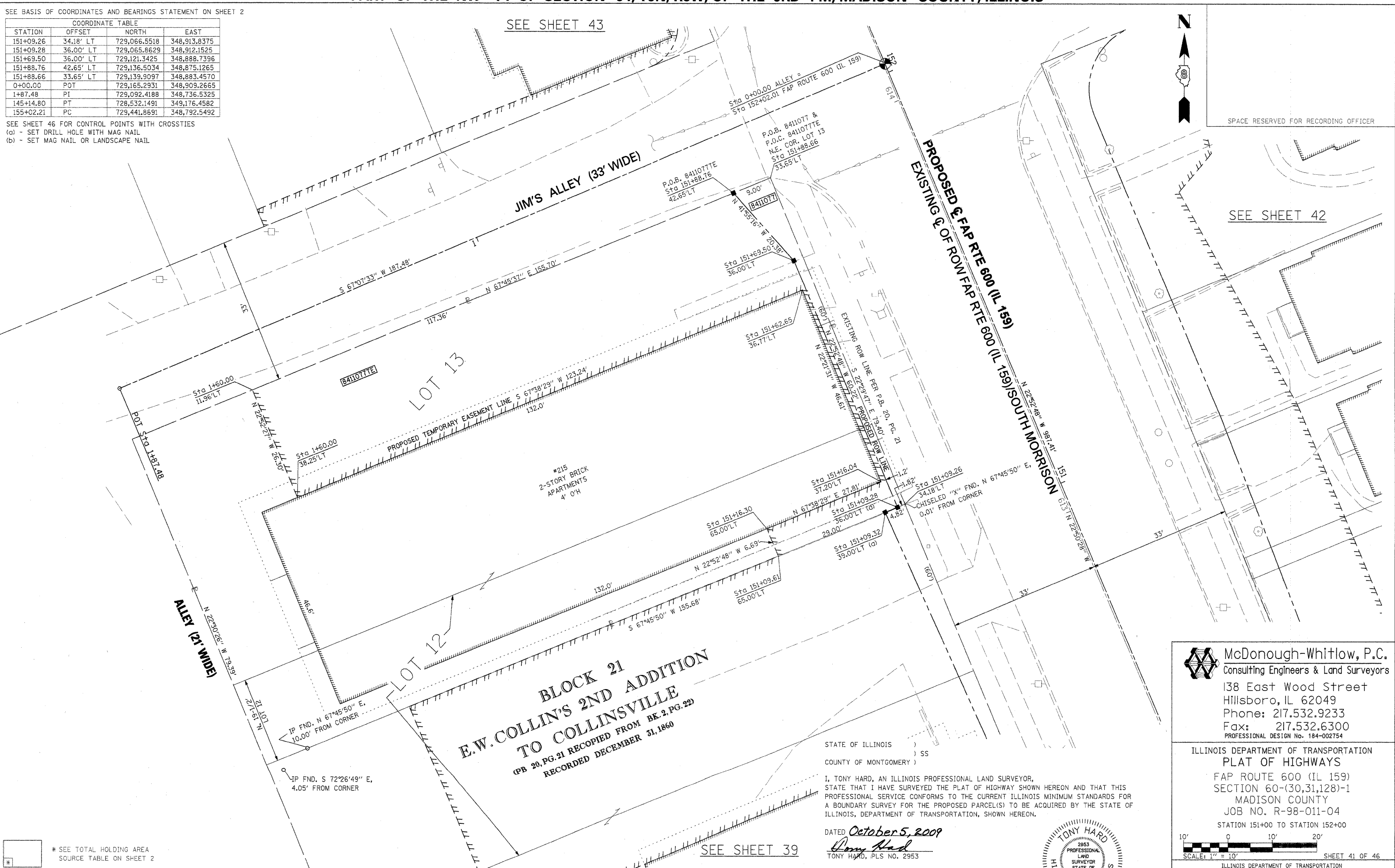


PART OF THE NW 14 OF SECTION 34, T3N, R8W, OF THE 3RD PM, MADISON COUNTY, ILLINOIS

SEE BASIS OF COORDINATES AND BEARINGS STATEMENT ON SHEET 2

COORDINATE TABLE			
STATION	OFFSET	NORTH	EAST
151+09.26	34.18' LT	729,066.5518	348,913.8375
151+09.28	36.00' LT	729,065.8629	348,912.1525
151+69.50	36.00' LT	729,121.3425	348,888.7396
151+88.76	42.65' LT	729,136.5034	348,875.1265
151+88.66	33.65' LT	729,139.9097	348,883.4570
0+00.00	POT	729,165.2931	348,909.2665
1+87.48	PI	729,092.4188	348,736.5325
145+14.80	PT	728,532.1491	349,176.4582
155+02.21	PC	729,441.8691	348,792.5492

SEE SHEET 46 FOR CONTROL POINTS WITH CROSSIES
 (a) - SET DRILL HOLE WITH MAG NAIL
 (b) - SET MAG NAIL OR LANDSCAPE NAIL



SEE SHEET 43

SEE SHEET 42

BLOCK 21
E.W. COLLINS' 2ND ADDITION
TO COLLINSVILLE
 (PB 20, PG. 21 RECORDED FROM BK. 2, PG. 22)
 RECORDED DECEMBER 31, 1860

STATE OF ILLINOIS)
) SS
 COUNTY OF MONTGOMERY)

I, TONY HARD, AN ILLINOIS PROFESSIONAL LAND SURVEYOR, STATE THAT I HAVE SURVEYED THE PLAT OF HIGHWAY SHOWN HEREON AND THAT THIS PROFESSIONAL SERVICE CONFORMS TO THE CURRENT ILLINOIS MINIMUM STANDARDS FOR A BOUNDARY SURVEY FOR THE PROPOSED PARCEL(S) TO BE ACQUIRED BY THE STATE OF ILLINOIS, DEPARTMENT OF TRANSPORTATION, SHOWN HEREON.

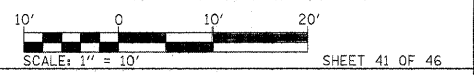
DATED October 5, 2009
Tony Hard
 TONY HARD, PLS NO. 2953



(License Expires: 11/30/10)

McDonough-Whitlow, P.C.
 Consulting Engineers & Land Surveyors
 138 East Wood Street
 Hillsboro, IL 62049
 Phone: 217.532.9233
 Fax: 217.532.6300
 PROFESSIONAL DESIGN NO. 184-002754

ILLINOIS DEPARTMENT OF TRANSPORTATION
 PLAT OF HIGHWAYS
 FAP ROUTE 600 (IL 159)
 SECTION 60-(30,31,128)-1
 MADISON COUNTY
 JOB NO. R-98-011-04
 STATION 151+00 TO STATION 152+00



ILLINOIS DEPARTMENT OF TRANSPORTATION
 DIVISION OF HIGHWAYS/REGION 5/DISTRICT 8
 1102 EASTPORT PLAZA DRIVE
 COLLINSVILLE, ILLINOIS 62234-6198

F.A.P. RTE.	SECTION	COUNTY	TOTAL SHEETS	SHEET NO.
600	60-(30,31,128)-1	MADISON	399	223

COMPLETION DATE OF FIELD WORK PERFORMED		CONTRACT NO. 76830	
LAND SURVEY: 10-11-05	ROW STAKING: 09-17-09	FED. ROAD DIST. NO.	ILLINOIS FED. AID PROJECT

* SEE TOTAL HOLDING AREA SOURCE TABLE ON SHEET 2

PARCEL NO.	OWNER	TOTAL HOLDING ACRES	GROSS		FEE SIMPLE ACQUISITION PREVIOUSLY DEDICATED AND/OR USED		NET		REMAINDER	EASEMENTS		PERMANENT TAX NUMBER	PROPERTY ACQUIRED BY
			ACRES	SQ. FT.	ACRES	SQ. FT.	ACRES	SQ. FT.		ACRES	SQ. FT.		
8411077	LOZALIVING, L.L.C., A MISSOURI LIMITED LIABILITY COMPANY TITLE REPORT NO. MA-3590.0	0.2638	0.0053	229	0	0	0.0053	229	0.2785	TE 0.0766	3,422	13-2-21-34-09-101-001	