

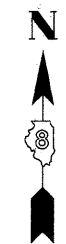
PART OF THE NW 14 OF SECTION 34, T3N, R8W, OF THE 3RD PM, MADISON COUNTY, ILLINOIS

SEE BASIS OF COORDINATES AND BEARINGS STATEMENT ON SHEET 2

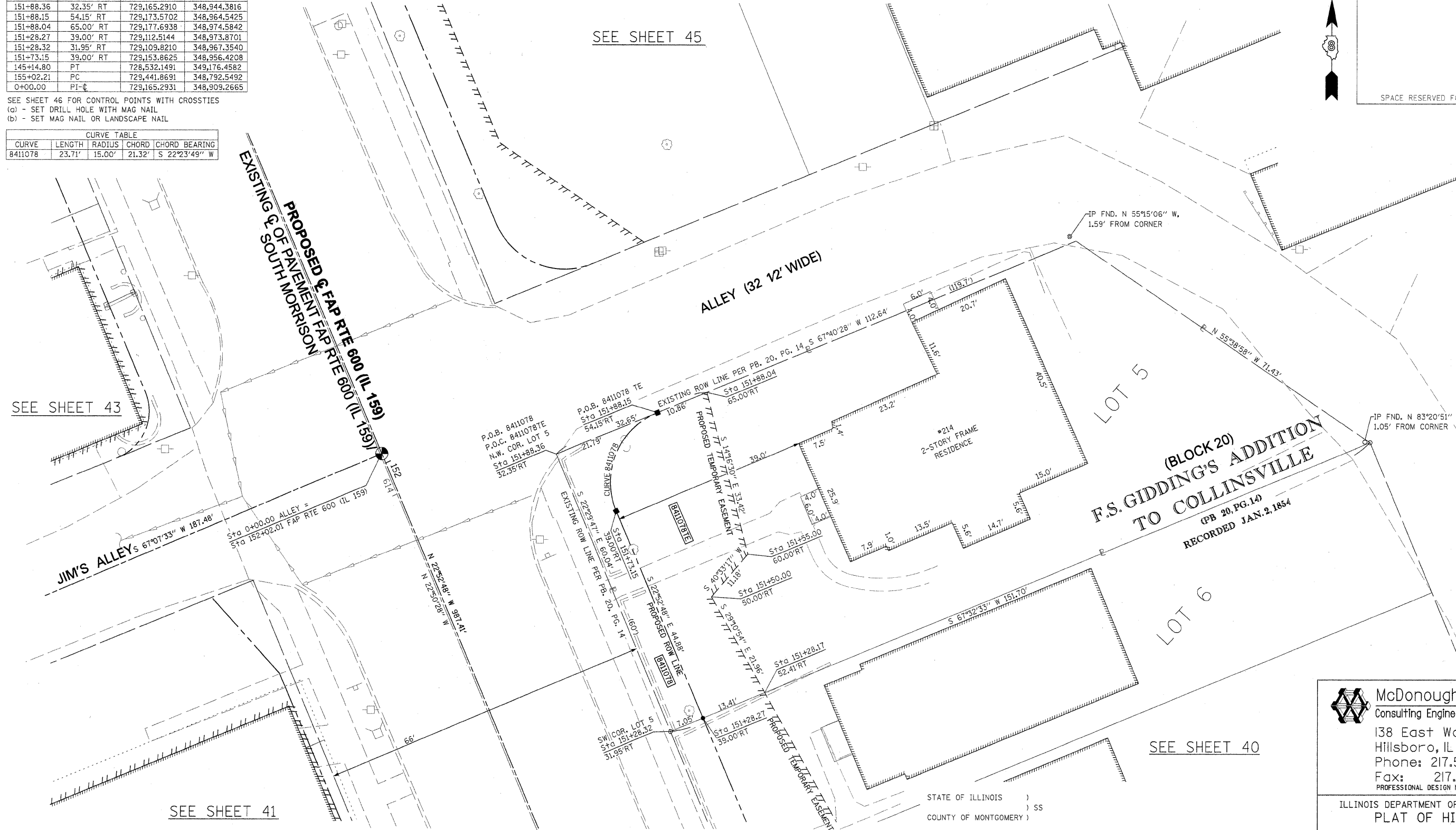
COORDINATE TABLE			
STATION	OFFSET	NORTHING	EASTING
151+88.36	32.35' RT	729,165.2910	348,944.3816
151+88.15	54.15' RT	729,173.5702	348,964.5425
151+88.04	65.00' RT	729,177.6938	348,974.5842
151+28.27	39.00' RT	729,112.5144	348,973.8701
151+28.32	31.95' RT	729,109.8210	348,967.3540
151+73.15	39.00' RT	729,153.8625	348,956.4208
145+14.80	PT	728,532.1491	349,176.4582
155+02.21	PC	729,441.8691	348,792.5492
0+00.00	PI	729,165.2931	348,909.2665

SEE SHEET 46 FOR CONTROL POINTS WITH CROSSIES  
 (a) - SET DRILL HOLE WITH MAG NAIL  
 (b) - SET MAG NAIL OR LANDSCAPE NAIL

CURVE TABLE			
CURVE	LENGTH	RADIUS	CHORD BEARING
8411078	23.71'	15.00'	S 22°23'49" W



SPACE RESERVED FOR RECORDING OFFICER



SEE SHEET 43

SEE SHEET 45

SEE SHEET 41

SEE SHEET 40

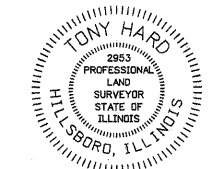
\* SEE TOTAL HOLDING AREA SOURCE TABLE ON SHEET 2

PARCEL NO.	OWNER	TOTAL HOLDING		FEE SIMPLE ACQUISITION			EASEMENTS			PERMANENT TAX NUMBER	PROPERTY ACQUIRED BY
		ACRES	SQ. FT.	ACRES	SQ. FT.	REMAINDER	PE - PERMANENT	TE - TEMPORARY	EASEMENT PURPOSE		
8411078	LEE G. SORENSON & MARY C. SORENSON, HUSBAND AND WIFE, AS JOINT TENANTS TITLE REPORT NO. MA-3591.0	0.1817	461	0.0106	461	0.1711	TE 0.0247	1.076	TE - GRADING & SIDEWALK CONSTRUCTION	13-2-21-34-05-103-004	

STATE OF ILLINOIS )  
 COUNTY OF MONTGOMERY ) SS

I, TONY HARD, AN ILLINOIS PROFESSIONAL LAND SURVEYOR, STATE THAT I HAVE SURVEYED THE PLAT OF HIGHWAY SHOWN HEREON AND THAT THIS PROFESSIONAL SERVICE CONFORMS TO THE CURRENT ILLINOIS MINIMUM STANDARDS FOR A BOUNDARY SURVEY FOR THE PROPOSED PARCEL(S) TO BE ACQUIRED BY THE STATE OF ILLINOIS, DEPARTMENT OF TRANSPORTATION, SHOWN HEREON.

DATED October 5, 2009  
*Tony Hard*  
 TONY HARD, PLS NO. 2953



**McDonough-Whitlow, P.C.**  
 Consulting Engineers & Land Surveyors  
 138 East Wood Street  
 Hillsboro, IL 62049  
 Phone: 217.532.9233  
 Fax: 217.532.6300  
 PROFESSIONAL DESIGN NO. 184-002754

ILLINOIS DEPARTMENT OF TRANSPORTATION  
 PLAT OF HIGHWAYS  
 FAP ROUTE 600 (IL 159)  
 SECTION 60-(30,31,128)-1  
 MADISON COUNTY  
 JOB NO. R-98-011-04  
 STATION 151+25 TO STATION 152+00

F.A.P. RTE.	SECTION	COUNTY	TOTAL SHEETS	SHEET NO.
600	60-(30,31,128)-1	MADISON	397	224
COMPLETION DATE OF FIELD WORK PERFORMED			CONTRACT NO. 76830	
LAND SURVEY: 10-11-05		ROW STAKING: 09-17-09		FED. ROAD DIST. NO. [ILLINOIS] FED. AID PROJECT