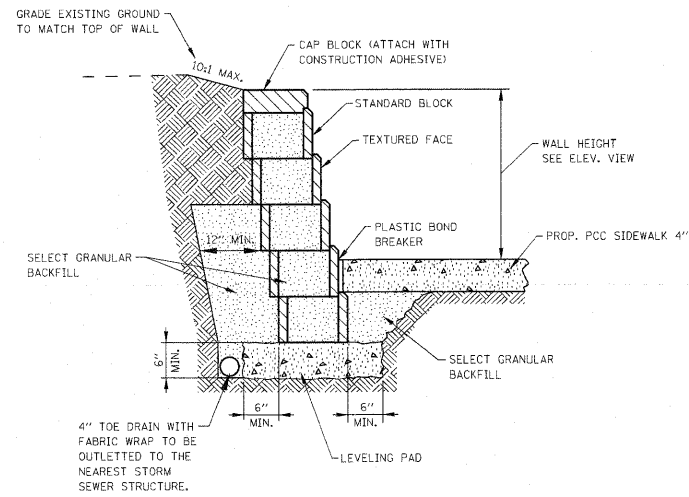


**PLAN**

SCALE 1" = 10'

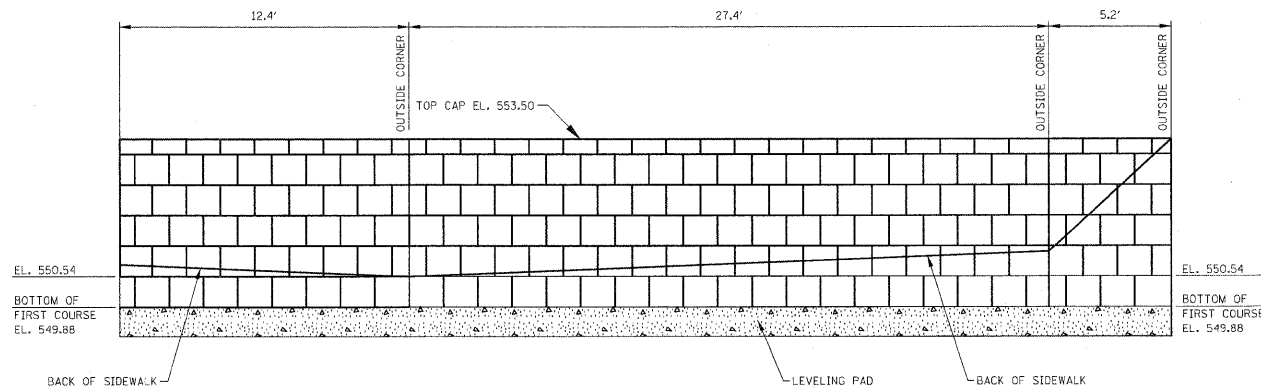


**SEGMENTAL CONCRETE BLOCK WALL  
TYPICAL SECTION DETAIL**

NO SCALE

**NOTES:**

1. THE STATIONS, OFFSETS AND ELEVATIONS AS SHOWN IN THE DETAIL ARE BASED ON BLOCKS WITH THE FOLLOWING DIMENSIONS:  
  
 STANDARD BLOCK  
 LENGTH = 17-5/8"  
 HEIGHT = 7-7/8"  
 DEPTH = 11-7/8"  
  
 CAP BLOCK:  
 LENGTH = 17-5/8"  
 HEIGHT = 3-7/8"  
 DEPTH = 12"  
  
 SET BACK: 6" WALL BATTER FROM VERTICAL  
  
 THE ACTUAL STATIONS, OFFSETS AND ELEVATIONS MAY VARY FROM THE DETAIL AT THE APPROVAL OF THE ENGINEER.
2. COLOR SAMPLE SHALL BE SUBMITTED BY THE CONTRACTOR.
3. THE FRONT SURFACE AREA OF THE SEGMENTAL CONCRETE BLOCK WALL = 163 SQ. FT. FROM TOP OF WALL TO THEORETICAL TOP OF LEVELING PAD.
4. THE FACE OF THE BLOCK WALL SHALL BE COVERED WITH PLASTIC OR OTHER MATERIAL DURING THE SIDEWALK CONSTRUCTION TO PREVENT SPLATTERING OF CONCRETE ON THE BLOCKS.
5. ADDITIONAL SIDEWALK WIDTH MAY BE REQUIRED DUE TO BLOCK WALL OFFSET CHANGES.
6. COST OF LEVELING PAD INCLUDED IN PAY ITEM FOR SEGMENTAL CONCRETE BLOCK WALL.
7. SEE SPECIAL PROVISIONS FOR PAYMENT INFORMATION.



**ELEVATION**

APPROXIMATE SCALE:  
 HORIZ. 1" = 4'  
 VERT. 1" = 2'

FILE NAME =	USER NAME = #USER#	DESIGNED -	REVISED -	<b>STATE OF ILLINOIS DEPARTMENT OF TRANSPORTATION</b>	<b>SEGMENTAL CONCRETE BLOCK WALL DETAILS</b>	F.A.P. RTE.	SECTION	COUNTY	TOTAL SHEETS	SHEET NO.	
#FILE#		DRAWN -	REVISED -			600	60-(30,31,128)-1	MADISON/ST. CLAIR	399	241A	
PLOT SCALE = #SCALE#		CHECKED -	REVISED -			CONTRACT NO. 76830					
PLOT DATE = #DATE#		DATE -	REVISED -			ILLINOIS FED. AID PROJECT					
					SCALE: N/A	SHEET NO. 1 OF 1 SHEETS		STA. N/A	TO STA. N/A		