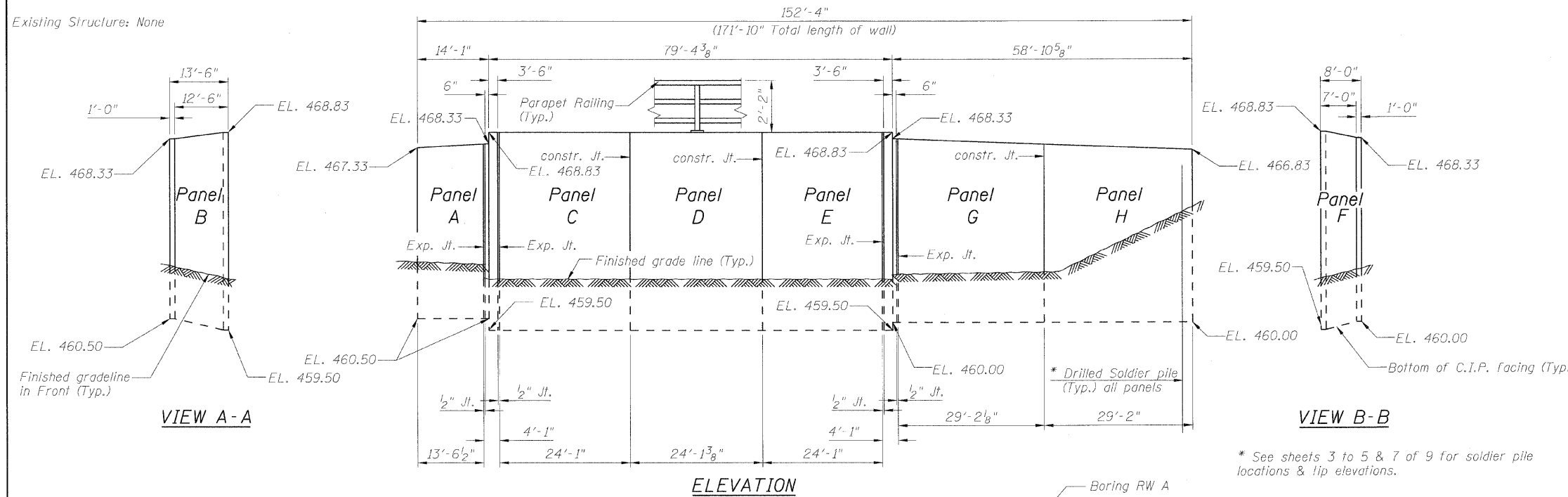


B.M. - # 114 Chiseled on center of N. Headwall for concrete box culvert, located on W. side of Il. Rte. 159 in "Buff Truck outfitters" parking lot across from historical landmark "Catsup Bottle" Elev. 475.811

STATE OF ILLINOIS
DEPARTMENT OF TRANSPORTATION

DESIGN SPECIFICATIONS
2002 AASHTO Standard Specifications for
Highway Bridges

Existing Structure: None



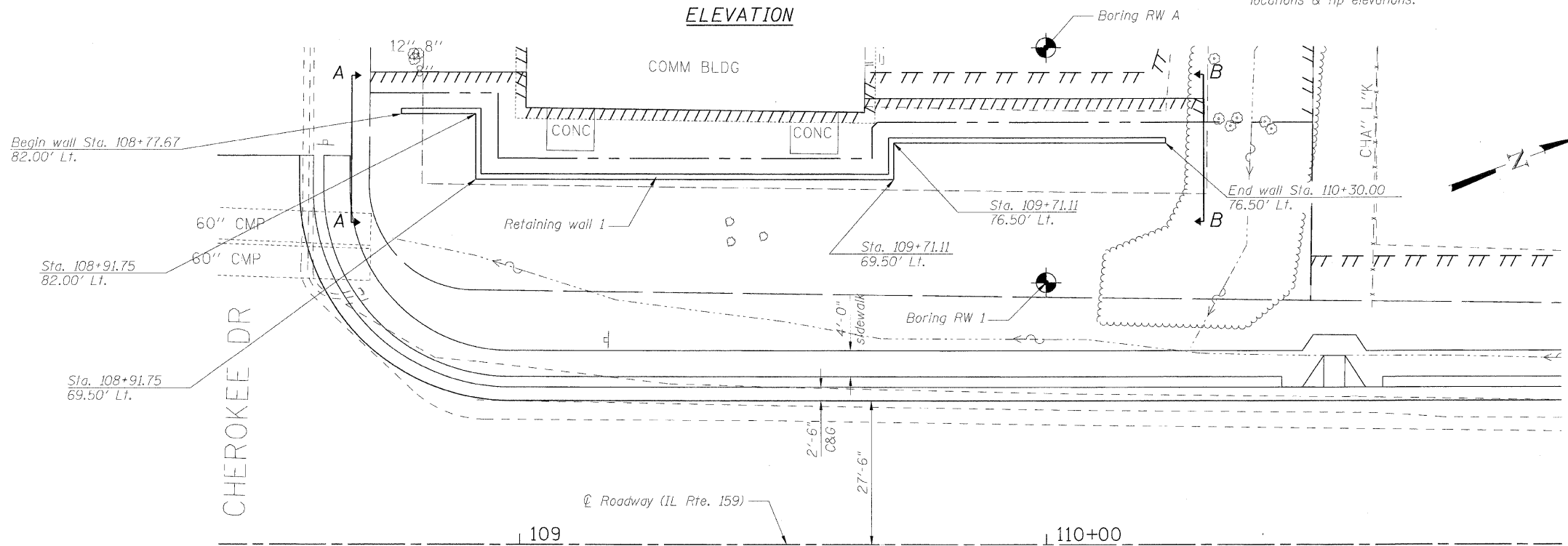
DESIGN STRESSES

FIELD UNITS
f'c = 3,500 psi
fy = 60,000 psi (Reinforcement)
fy = 36,000 psi (soldier piles)

LEGEND

- TT TT TT TT TT TT TT TT TT Temporary Easement
- //// Permanent Easement
- Proposed ROW
- Existing ROW

* See sheets 3 to 5 & 7 of 9 for soldier pile locations & tip elevations.



INDEX OF SHEETS

1. General Plan and Elevation
2. General Notes, Cross section & Total Bill of Material
3. Panels A & B
4. Panels C, D, & E
5. Panels F, G, & H
6. Soldier pile wall details
7. Soldier pile wall data
8. Parapet Railing
9. Boring Logs

APPROVED
FOR STRUCTURAL ADEQUACY ONLY
Robert E. Anderson (TS)
ENGINEER OF BRIDGES AND STRUCTURES

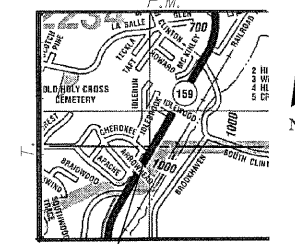
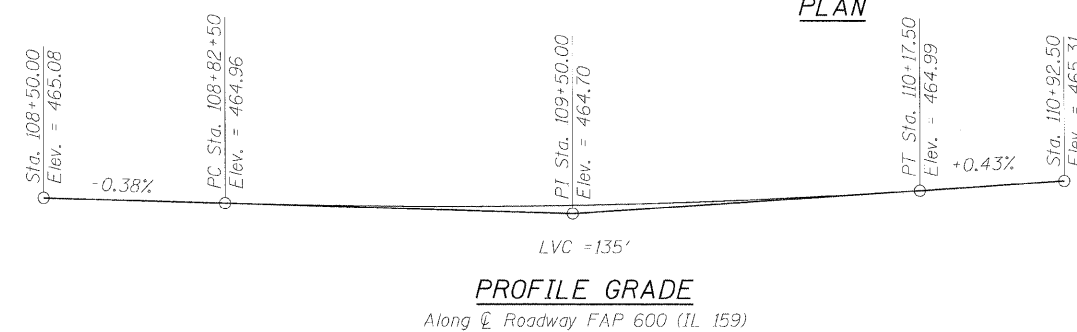


Expires: 11/30/2010

m. j. Karshenas 10-5-2009

GENERAL PLAN & ELEVATION
IL RTE. 159
FAP ROUTE 600 SEC. 60-(30,31,128)-1
ST. CLAIR COUNTY/MADISON COUNTY
STA. 109+50.00

DESIGNED - KRG
CHECKED - MJK
DRAWN - GSJ
CHECKED - MJK



MID-AMERICA ENGINEERING SERVICES

SHEET NO. 1 9 SHEETS	F.A.P. RTE. 600	SECTION 60-(30,31,128)-1	COUNTY St. Clair/Madison	TOTAL SHEETS 399	SHEET NO. 257
	RETAINING WALL 1		CONTRACT NO. 76830		
FED. ROAD DIST. NO. ILLINOIS FED. AID PROJECT					