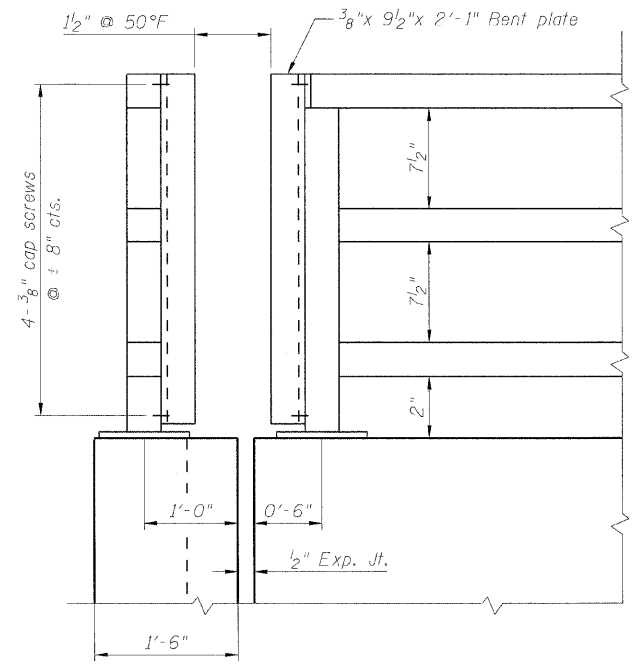


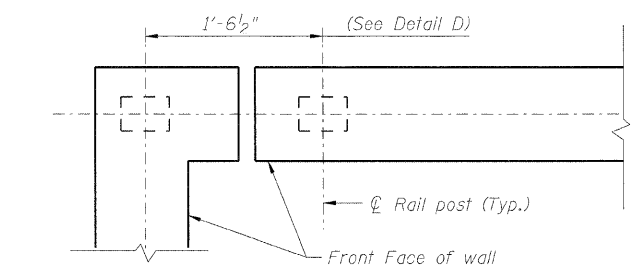
STATE OF ILLINOIS  
DEPARTMENT OF TRANSPORTATION

NOTE: All steel railing elements shall be galvanized according to article 509.05 of the Standard Specifications.

HSS indicates hollow structural section.

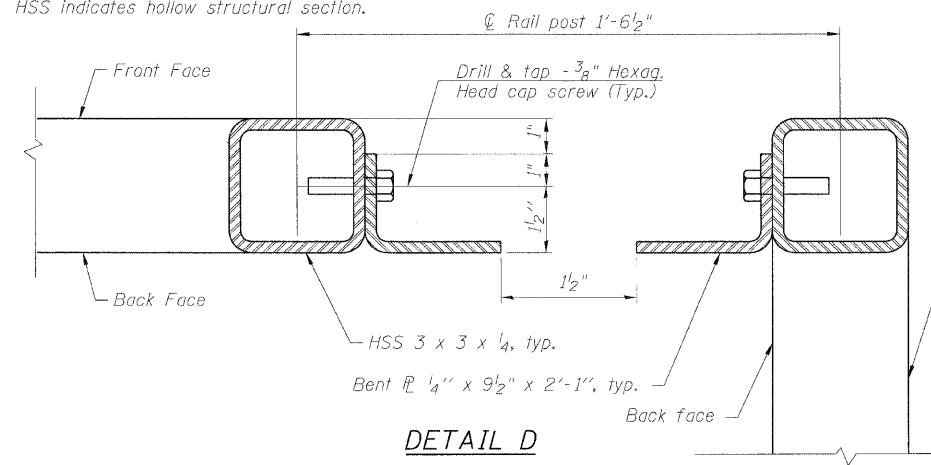


ELEVATION

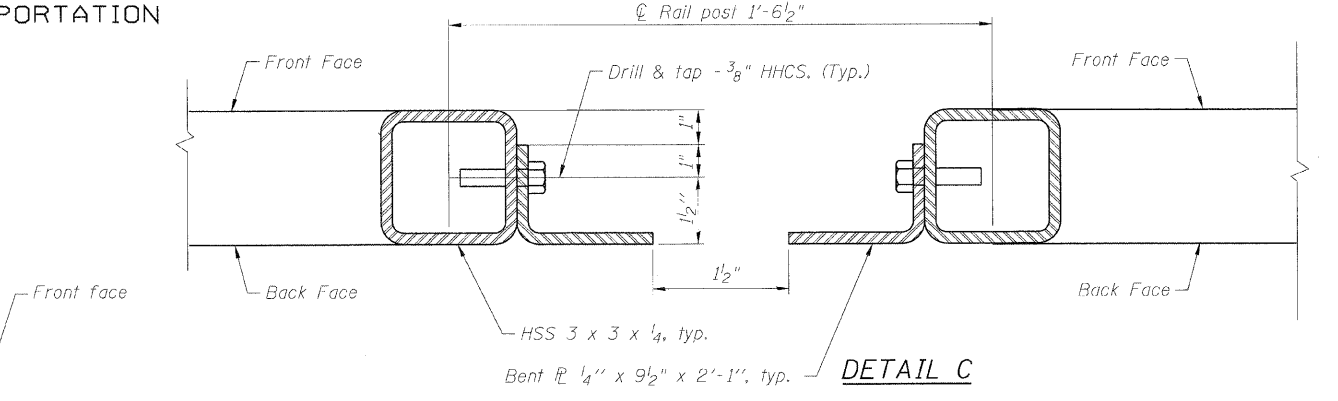


PLAN

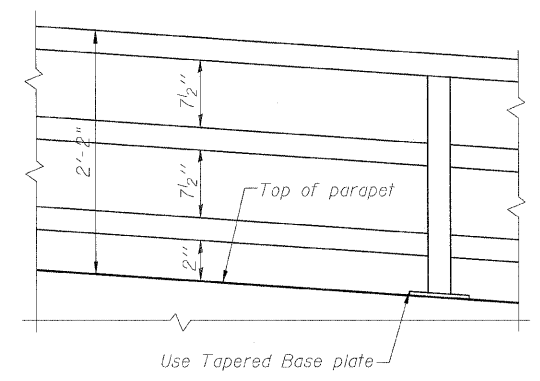
Wall corner detail at station 108+91.75 (82' Lt.) & 109+71.11 (76.50' Lt.)



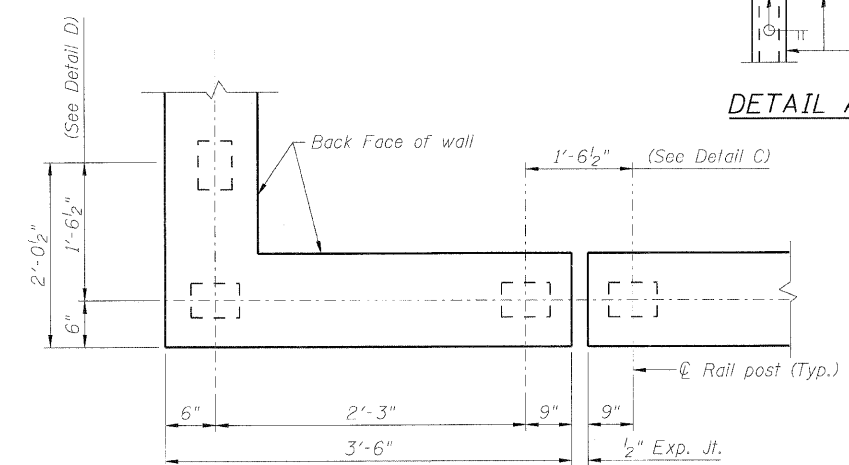
DETAIL D



DETAIL C

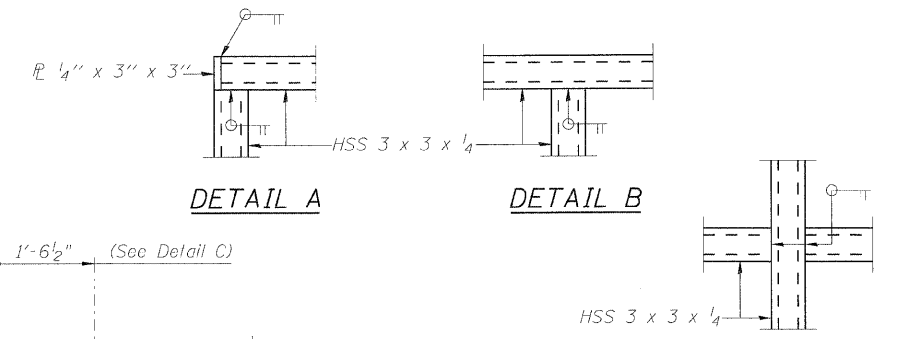


PARAPET RAILING ELEVATION  
(Inclined top of wall)



PLAN

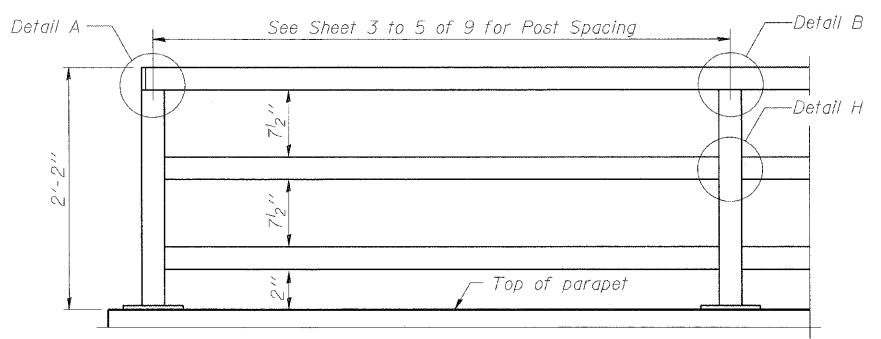
Wall corner detail at station 108+91.75 (69.50' Lt.) & 109+71.11 (69.50' Lt.)



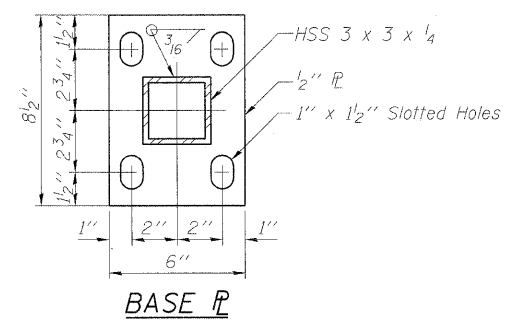
DETAIL A

DETAIL B

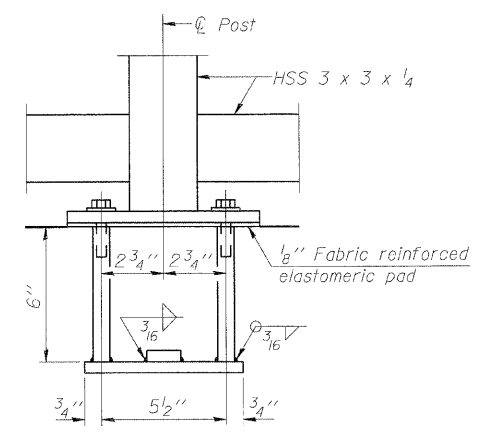
DETAIL H



PARAPET RAILING ELEVATION  
(Inside Face of Three Element Rail)

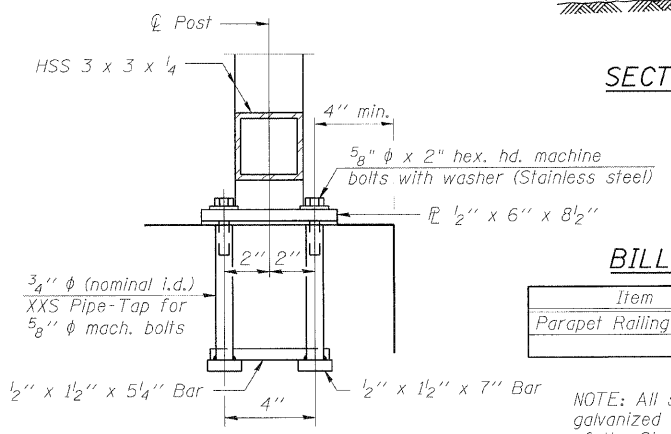


BASE PLATE



ANCHOR BOLT DETAILS

In lieu of the cast-in-place anchor device shown, the Contractor has the option of drilling and setting 5/8 inch diameter anchor rods according to Article 509.06 of the Standard Specifications. Embedment shall be according to the manufacturer's specifications.

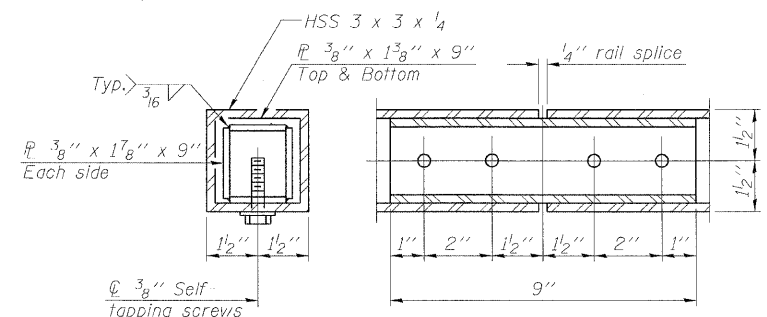


BILL OF MATERIAL

Item	Unit	Quantity
Parapet Railing	Foot	172

NOTE: All steel railing elements shall be galvanized according to article 509.05 of the Standard Specifications.  
HHCS designates Hexagonal head cap screws  
HHS designates hollow structural section.

DESIGNED - KRG
CHECKED - MJK
DRAWN - GSJ
CHECKED - MJK



RAIL SPLICE

PARAPET RAILING

SHEET NO.	F.A.P. RTE.	SECTION	COUNTY	TOTAL SHEETS	SHEET NO.
9 SHEETS	600	60-(30,31,128)-1	St. Clair/Madison	399	264
RETAINING WALL 1			CONTRACT NO. 76830		
FED. ROAD DIST. NO.		ILLINOIS	FED. AID PROJECT		

MID-AMERICA ENGINEERING SERVICES