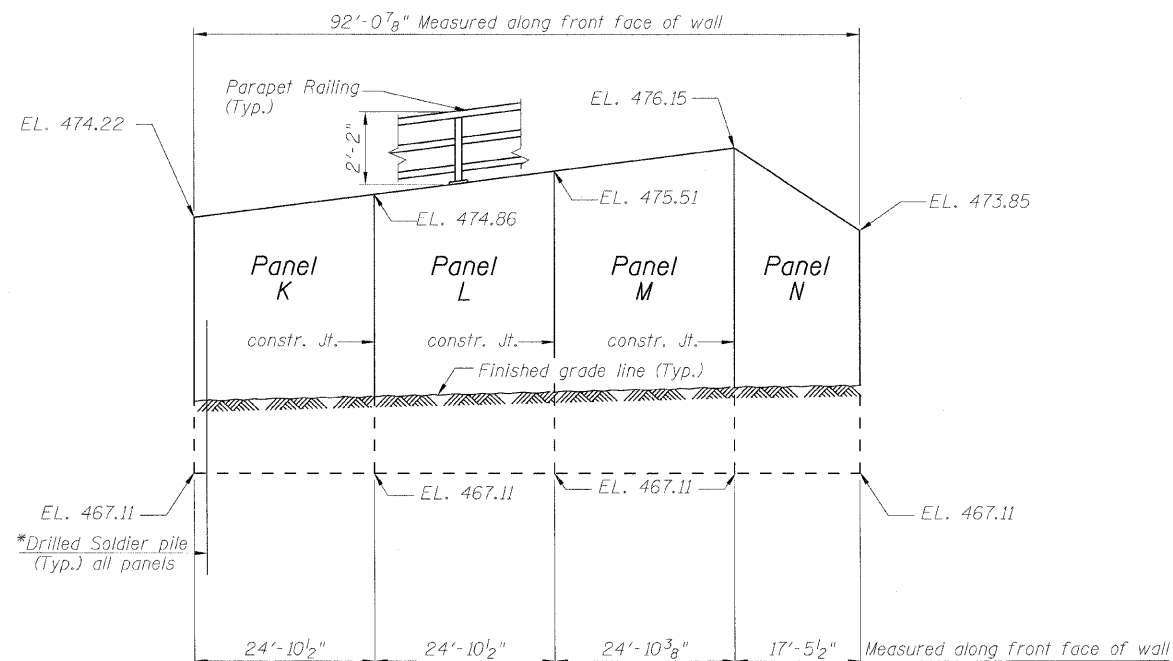


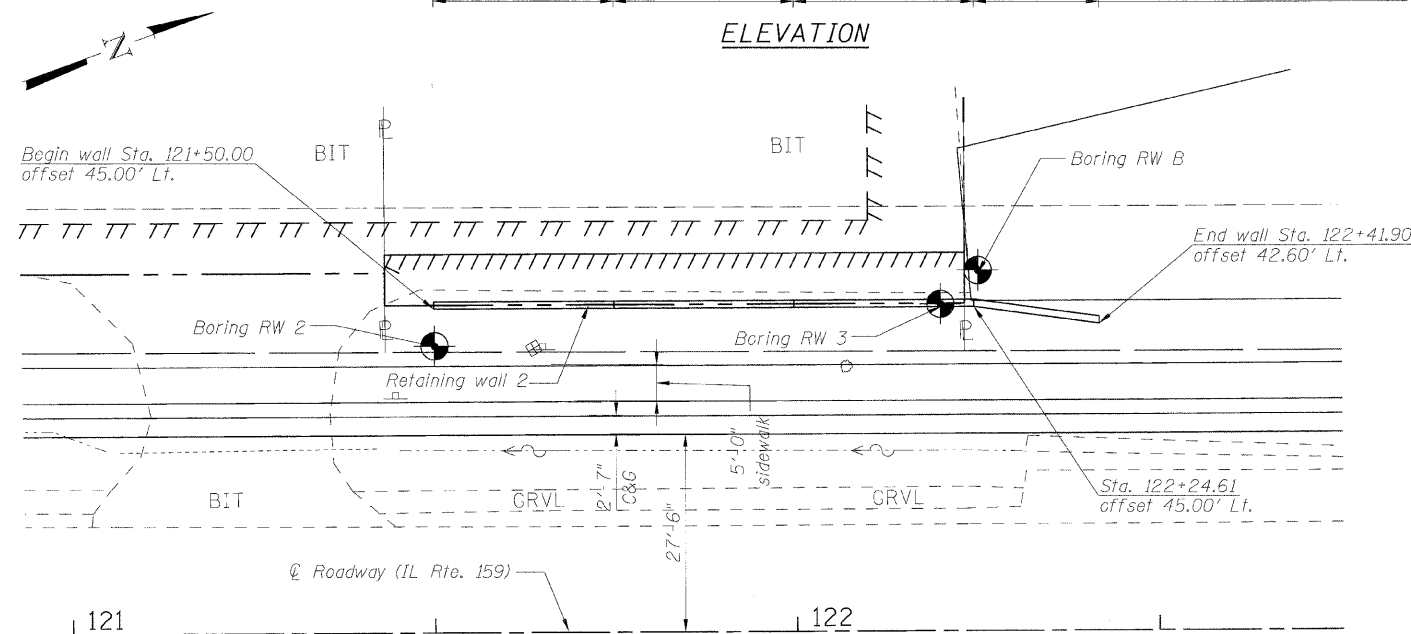
B.M. - # 114 Chiseled on center of N. Headwall for concrete box culvert, located on W. side of IL Rte. 159 in "Buff Truck outfilters" parking lot across from historical landmark "Catsup Bottle" Elev. 475.811

Existing Structure: None

STATE OF ILLINOIS
DEPARTMENT OF TRANSPORTATION



ELEVATION



PLAN



PROFILE GRADE

Along \odot Roadway FAP 600 (IL 159)

LEGEND

- TTTTTTTTTTTTTTTTTTTT Temporary Easement
- TTTTTTTTTTTTTTTTTTTT Permanent Easement
- Proposed ROW
- Existing ROW

* See sheets 3 & 5 of 7 for soldier pile locations & tip elevations.

INDEX OF SHEETS

1. General Plan and Elevation
2. General Notes, Cross section & Total Bill of Material
3. Panels K, L, M & N
4. Soldier pile wall details
5. Soldier pile wall data
6. Parapet Railing
7. Boring Logs

DESIGN SPECIFICATIONS

2002 AASHTO Standard Specifications for Highway Bridges

DESIGN STRESSES

FIELD UNITS

- $f'_c = 3,500$ psi
- $f_y = 60,000$ psi (Reinforcement)
- $f_y = 36,000$ psi (soldier piles)

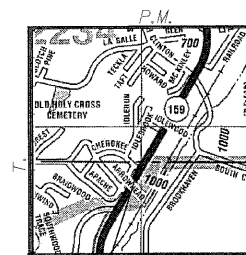
APPROVED
FOR STRUCTURAL ADEQUACY ONLY

Ralph E. Anderson (PE)
ENGINEER OF BRIDGES AND STRUCTURES



Expires: 11/30/2010

m.j. Karshenas 10-5-2009



PROPOSED WALL 2 R.

LOCATION SKETCH

MID-AMERICA ENGINEERING SERVICES

GENERAL PLAN & ELEVATION
IL RTE. 159
FAP ROUTE 600 SEC. 60-(30,31,128)-1
MADISON COUNTY
STA. 122+00.00

DESIGNED - KRG
CHECKED - MJK
DRAWN - GSJ
CHECKED - MJK

SHEET NO. 1 7 SHEETS	F.A.P. RTE. 600	SECTION 60-(30,31,128)-1	COUNTY Madison	TOTAL SHEETS 399	SHEET NO. 266
	RETAINING WALL 2			CONTRACT NO. 76830	
FED. ROAD DIST. NO. ILLINOIS FED. AID PROJECT					