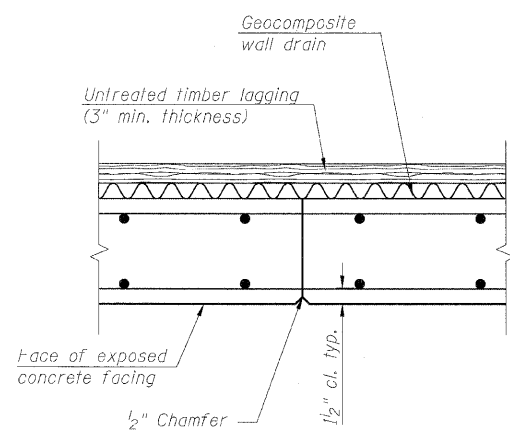
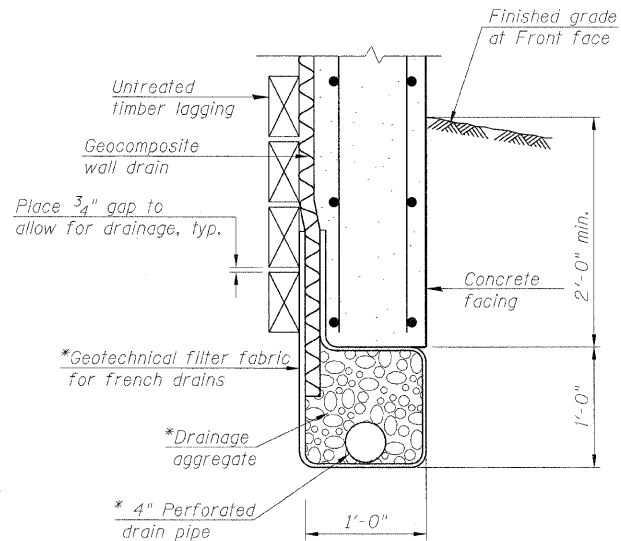


STATE OF ILLINOIS
DEPARTMENT OF TRANSPORTATION

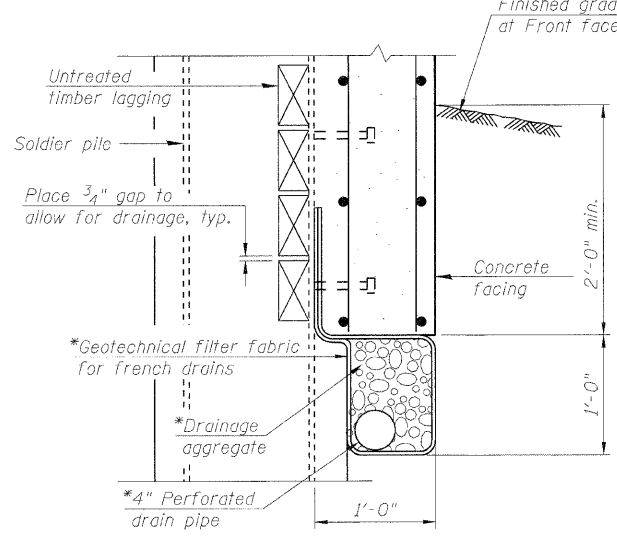


CONSTRUCTION JOINT

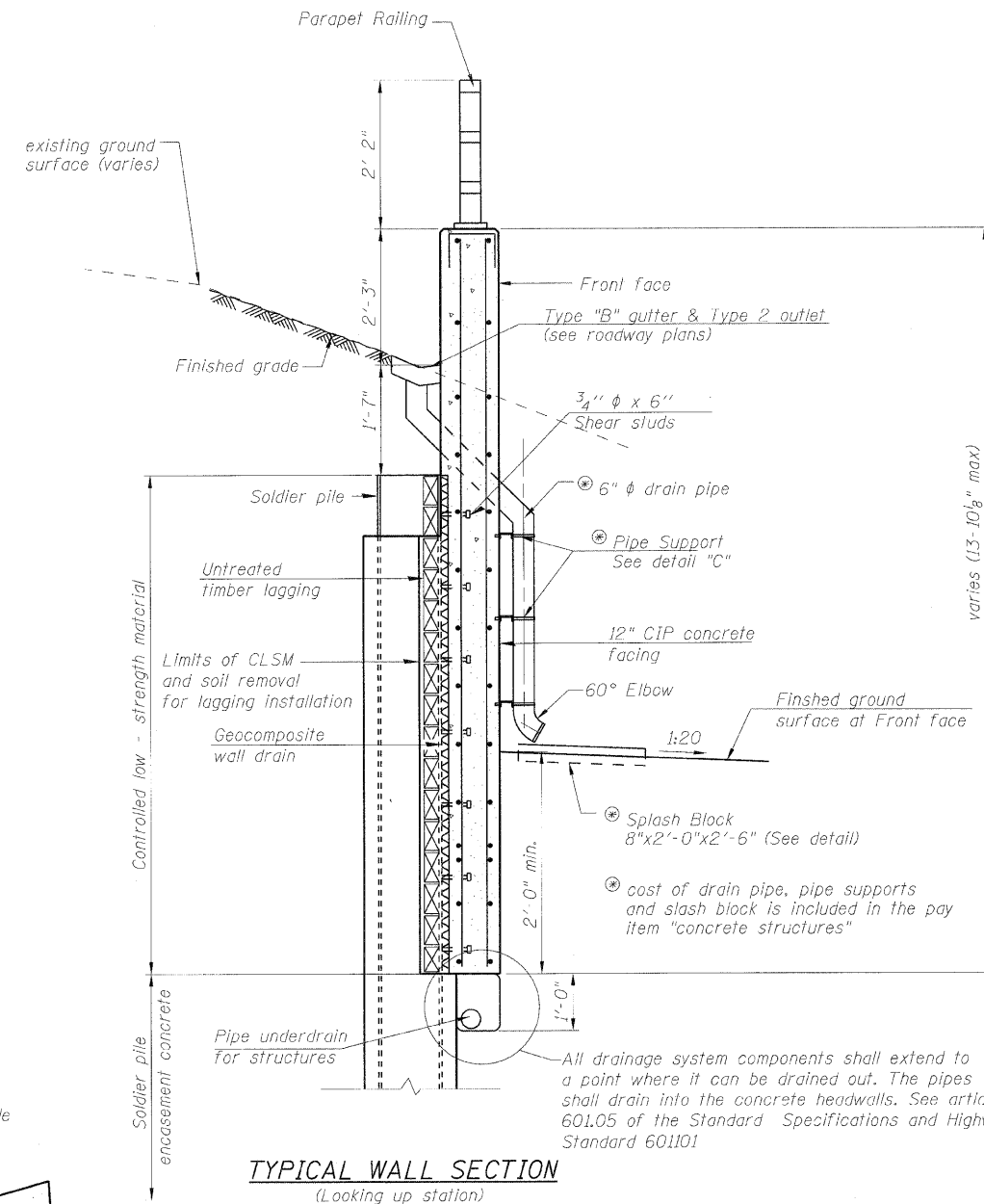
Note: The contractor is responsible for the design and performance of the lagging using no less than 3 in. nominal rough-sawn thickness and timber with a minimum allowable bending stress of 1000 psi.



UNDER DRAIN DETAIL BETWEEN SOLDIER PILES



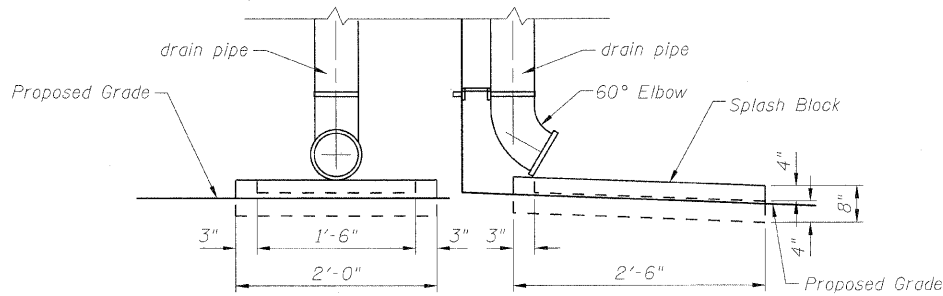
UNDER DRAIN DETAIL AT SOLDIER PILES



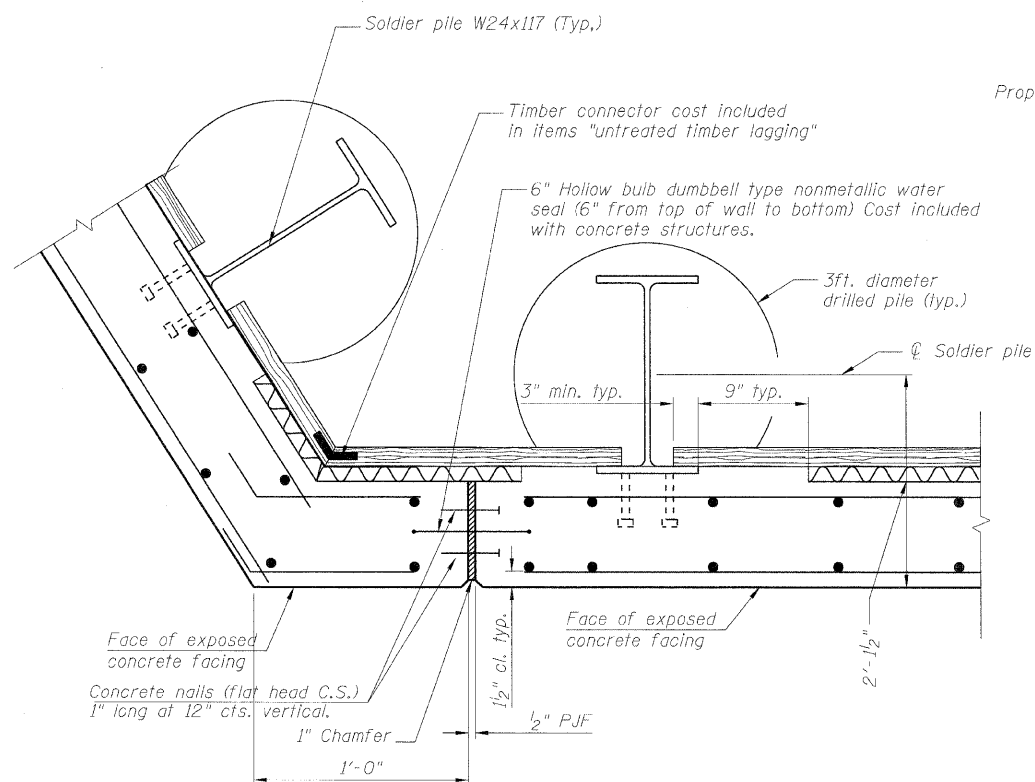
TYPICAL WALL SECTION
(Looking up station)

All drainage system components shall extend to a point where it can be drained out. The pipes shall drain into the concrete headwalls. See article 601.05 of the Standard Specifications and Highway Standard 601101

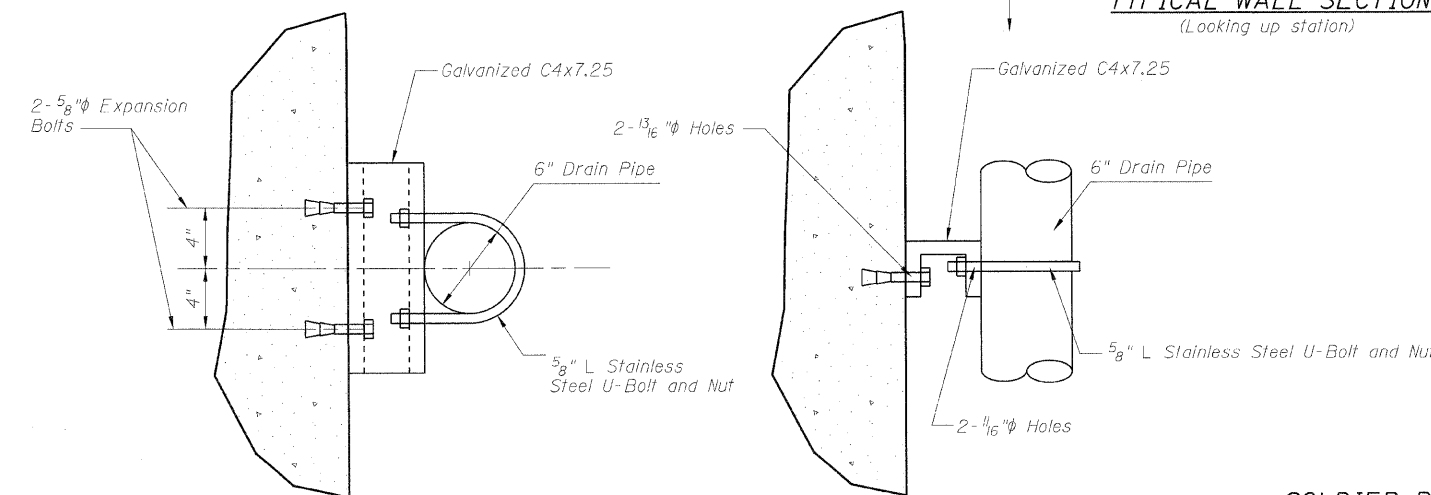
* Included in the cost of Pipe Underdrains for structures.



SLASH BLOCK DETAIL



EXPANSION JOINT



PLAN

ELEVATION

PIPE SUPPORT DETAIL "C"

SOLDIER PILE WALL DETAILS

DESIGNED - KRG
CHECKED - MJK
DRAWN - GSJ
CHECKED - MJK

SHEET NO. 5	F.A.P. RTE.	SECTION	COUNTY	TOTAL SHEETS	SHEET NO.
	600	60-(30,31,128)-1	Madison	399	276
8 SHEETS	RETAINING WALL 3		CONTRACT NO. 76830		
FED. ROAD DIST. NO. - ILLINOIS FED. AID PROJECT					

Rev. MID-AMERICA ENGINEERING SERVICES