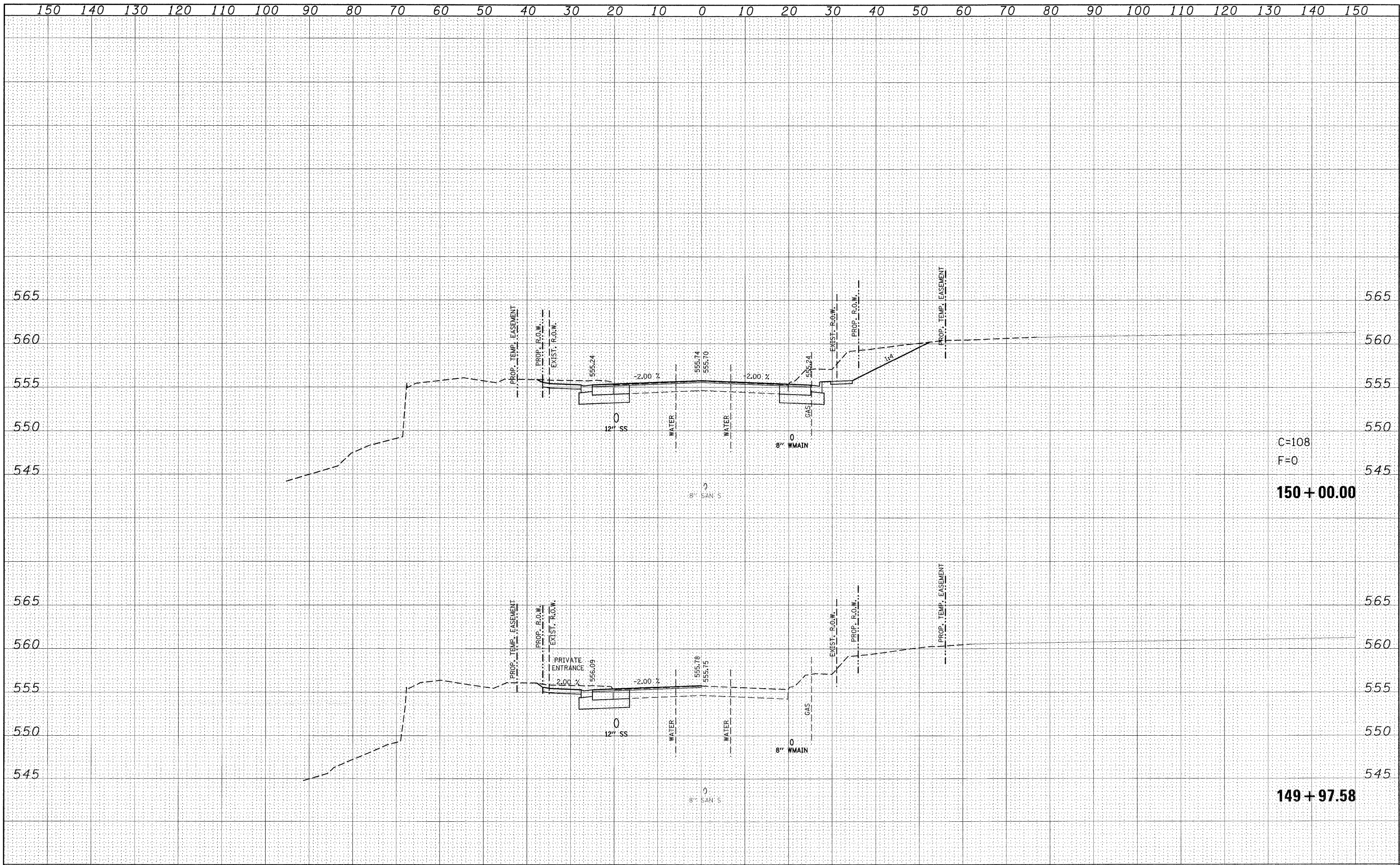


| | |
|---------------|--|
| DATE | |
| BY | |
| FINAL SURVEY | |
| TEMPLATE | |
| NOTE BOOK | |
| AREAS CHECKED | |
| NO. | |

| | |
|-----------------|--|
| DATE | |
| BY | |
| ORIGINAL SURVEY | |
| TEMPLATE | |
| NOTE BOOK | |
| AREAS CHECKED | |
| NO. | |



FILE NAME = P:\Projects\151350\1\CADD\DM\vd876830-sht-ssht-159.dgn
 USER NAME = default
 DESIGNED -
 DRAWN -
 CHECKED -
 PLOT DATE = 6/24/2009

DESIGNED -
 DRAWN -
 CHECKED -
 DATE -

REVISED -
 REVISED -
 REVISED -
 REVISED -

**STATE OF ILLINOIS
 DEPARTMENT OF TRANSPORTATION**

**IL ROUTE 159
 MAINLINE CROSS SECTIONS**

SCALE: SHEET NO. 64 OF 120 SHEETS STA. 149+97.58 TO STA. 150+00.00

| F.A.P. RTE. | SECTION | COUNTY | TOTAL SHEETS | SHEET NO. |
|-----------------------------|------------------|-------------------|--------------------|-----------|
| 600 | 60-(30,31,128)-1 | ST. CLAIR/MADISON | 399 | 343 |
| | | | CONTRACT NO. 76830 | |
| [ILLINOIS] FED. AID PROJECT | | | | |