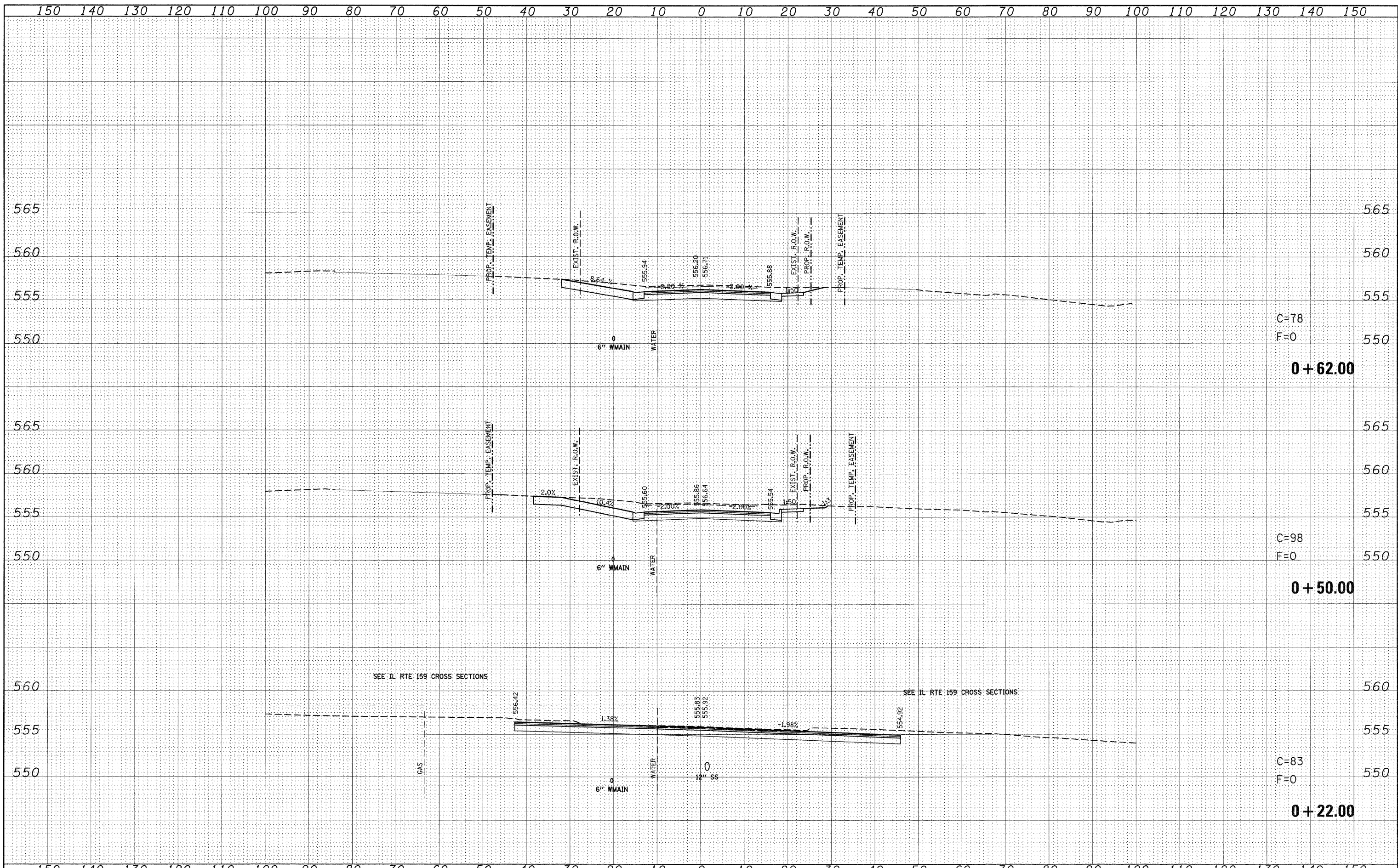


DATE	
BY	
SUPERVISED	
NOTED	
TEMPLATE	
AREAS	
CHECKED	
NO.	

DATE	
BY	
SUPERVISED	
NOTED	
TEMPLATE	
AREAS	
CHECKED	
NO.	



FILE NAME =	USER NAME = default	DESIGNED -	REVISED -	STATE OF ILLINOIS DEPARTMENT OF TRANSPORTATION	HILL ST SIDE ROAD CROSS SECTIONS		F.A.P. RTE.	SECTION	COUNTY	TOTAL SHEETS	SHEET NO.	
ps:\projects\1513501\cadd\dgn\q876830-shr-xasht-11.dgn		DRAWN -	REVISED -		SCALE:	SHEET NO. 107 OF 120 SHEETS	STA. +22.00 TO STA. +62.00	600	60-(30,31,128)-1	ST. CLAIR/MADISON	399	386
PLOT SCALE = 10.0000' / IN.		CHECKED -	REVISED -		CONTRACT NO. 76830							
PLOT DATE = 8/24/2009		DATE	REVISED		ILLINOIS FED. AID PROJECT							