

F.A.I. RTE.	SECTION	COUNTY	TOTAL SHEETS	SHEET NO.
64	DIST 8 ITS 2010-1	ST. CLAIR	34	1
FED. ROAD DIST. NO. ILLINOIS		CONTRACT NO. 76C36		

INDEX OF SHEETS

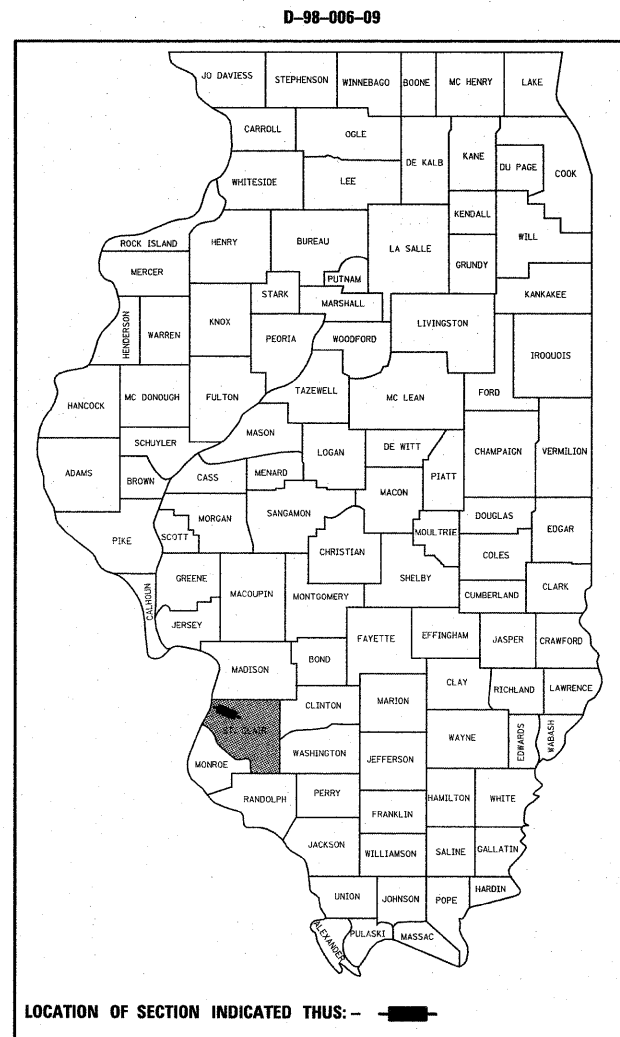
1. COVER SHEET
2. PLAN SHEET LAYOUT/VOLUME SCHEDULE
- 3&4. SUMMARY OF QUANTITIES
5. GENERAL NOTES AND LEGEND
- 6-8. SWPPP PLAN 1-3 OF 3
9. RADAR VEHICLE DETECTION DETAIL
10. LIGHT POLE FOUNDATION DETAILS
11. POLE MOUNTED CCTV DETAIL WITH CAMERA LOWERING DEVICE
12. POLE MOUNTED CCTV DETAIL WITH CAMERA LOWERING DEVICE AND SERVICE INSTALLATION DETAILS
13. MULTI-DUCT CONDUIT INSTALLATION OVER RAILROAD TRACKS
- 14-28. ITS PLANS 1-15 OF 15
29. TERMINATION-SPLICE TOTALS AND SWITCH SCHEDULE
30. COMMUNICATION SYSTEM NETWORK LAYOUT
31. COMMUNICATION SHEET MP557002.4 CABINET TO MP006403.9 CABINET
32. COMMUNICATION SHEET MP006404.5 CABINET TO MP006405.6 CABINET
33. COMMUNICATION SHEET MP006406.9 CABINET
34. SOIL BORING LOG

STATE OF ILLINOIS
DEPARTMENT OF TRANSPORTATION
DIVISION OF HIGHWAYS
PROPOSED
HIGHWAY PLANS

FAI ROUTE 64
SECTION DIST 8 ITS 2010-1
PROJECT: CMI-064-1(126)000
ST. CLAIR COUNTY

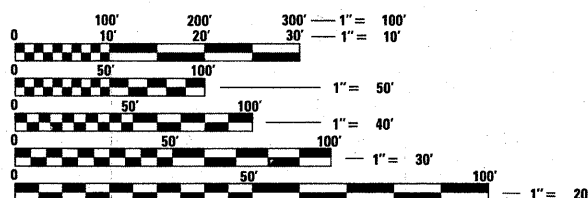
ITS COMMUNICATION, DETECTION AND SURVEILLANCE DEVICES
FROM I-55/70/64 0.3 MI. E. OF 3RD ST. TO
I-64 W. OF ALTON SOUTHERN RR SN 082-0168 & 0167

C-98-003-09



STANDARDS

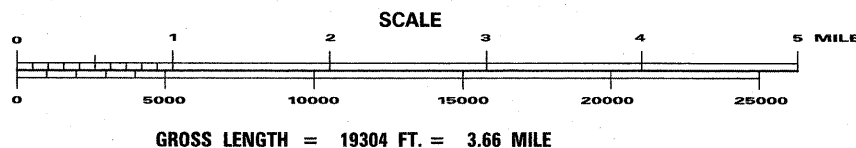
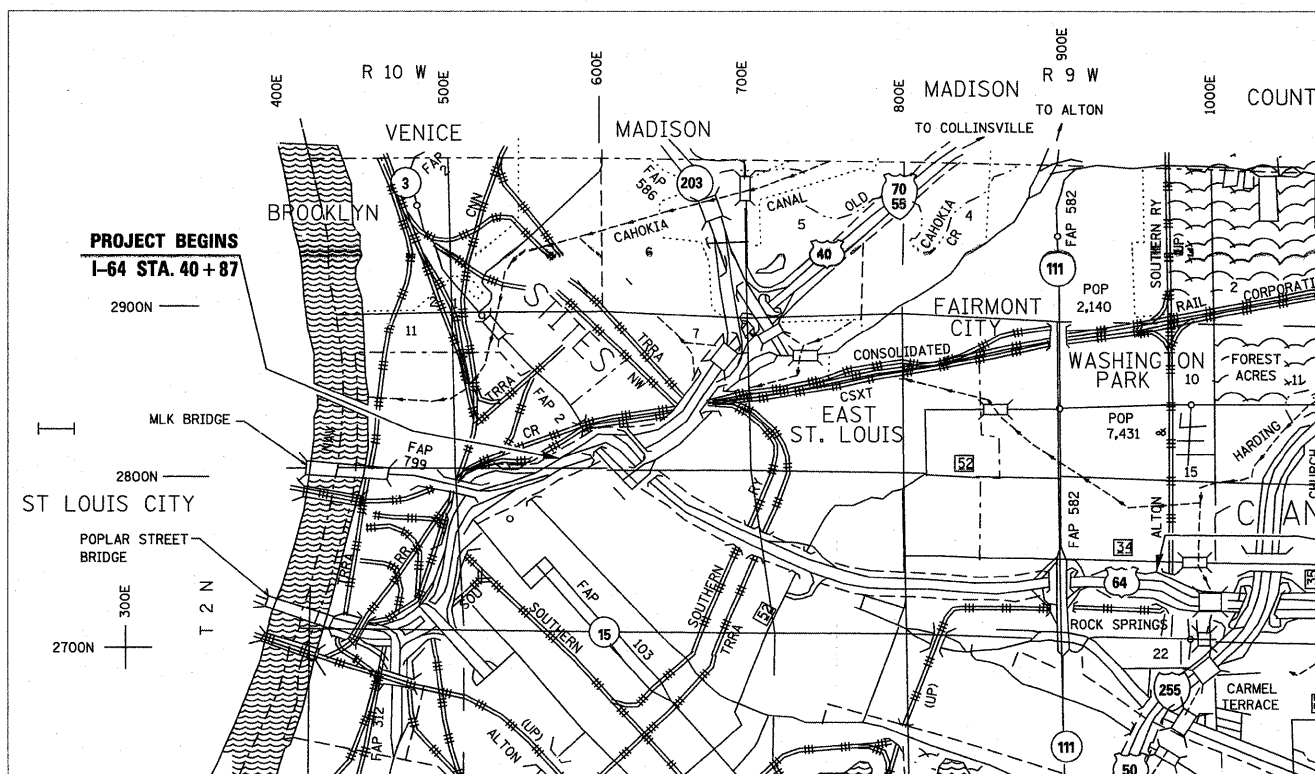
- | | | |
|-----------|-----------|-----------|
| 000001-05 | 280001-04 | 701101-02 |
| 701106-02 | 701400-03 | 701406-05 |
| 701411-05 | 701446 | 701456 |
| 701601-06 | 701606-06 | 701801-04 |
| 701901 | 814001-02 | 814006-02 |
| 878001-07 | | |



FULL SIZE PLANS HAVE BEEN PREPARED USING STANDARD ENGINEERING SCALES. REDUCED SIZED PLANS WILL NOT CONFORM TO STANDARD SCALES. IN MAKING MEASUREMENTS ON REDUCED PLANS, THE ABOVE SCALES MAY BE USED.

J.U.L.I.E.
 JOINT UTILITY LOCATION INFORMATION FOR EXCAVATION
 1-800-892-0123
 OR 811

PROJECT ENGINEER: PATTI LEBEAU 618-346-3179
SQUAD LEADER: MICHAEL PRESTON 618-346-3143
LIAISON ENGINEER: LEONARD LEONARD 618-346-3285
CONTRACT NO. 76C36



PROJECT ENDS
 I-64 STA. 244 + 11

STATE OF ILLINOIS
DEPARTMENT OF TRANSPORTATION
DIVISION OF HIGHWAYS

SUBMITTED March 17 20 10

Mary C. Jamie
 DEPUTY DIRECTOR OF HIGHWAYS, REGION 5 ENGINEER

May 7 20 10
Scott E. Skitt, P.E. /s/
 Acting ENGINEER OF DESIGN AND ENVIRONMENT

May 7 20 10
Christine M. Reed /s/
 DIRECTOR OF HIGHWAYS, CHIEF ENGINEER

PRINTED BY THE AUTHORITY
OF THE STATE OF ILLINOIS