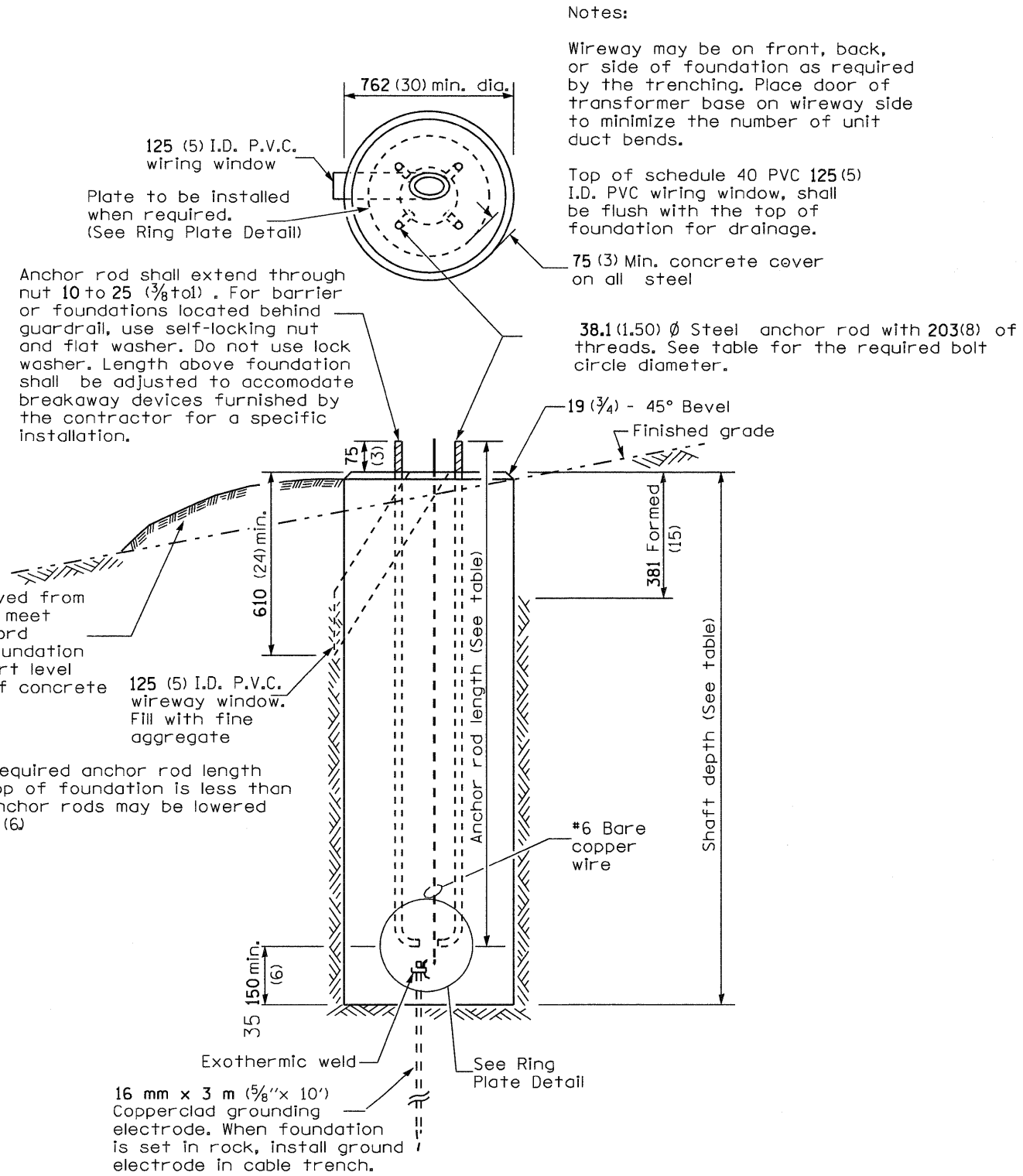


CONCRETE FOUNDATION				
LIGHT POLE MOUNTING HEIGHT	BOLT CIRCLE DIAMETER	SHAFT DIAMETER	SHAFT DEPTH	ANCHOR ROD LENGTH *
15.2 m (50')	508 mm (20')	762mm (30')	2.13m (7'-0")	1.4 m (4'-6")

* Length does not include 152 (6)hook

Notes:

All foundations are designed to be located on slopes not exceeding 2:1 where soils have an unconfined compressive strength of at least 1.0 TSF. The contractor shall verify the soil strength during drilling for concrete foundations or by monitoring installation resistance on steel foundations and notify the engineer if other conditions are encountered.



Notes:

Wireway may be on front, back, or side of foundation as required by the trenching. Place door of transformer base on wireway side to minimize the number of unit duct bends.

Top of schedule 40 PVC 125 (5) I.D. PVC wiring window, shall be flush with the top of foundation for drainage.

75 (3) Min. concrete cover on all steel

38.1 (1.50) Ø Steel anchor rod with 203 (8) of threads. See table for the required bolt circle diameter.

Anchor rod shall extend through nut 10 to 25 (3/8 to 1). For barrier or foundations located behind guardrail, use self-locking nut and flat washer. Do not use lock washer. Length above foundation shall be adjusted to accommodate breakaway devices furnished by the contractor for a specific installation.

Use dirt removed from foundation to meet 1.52m (5 ft.) chord fill around foundation top. Grade dirt level with bottom of concrete chamfer.

125 (5) I.D. P.V.C. wireway window. Fill with fine aggregate

If the required anchor rod length above top of foundation is less than 75 (3), anchor rods may be lowered below 150 (6)

16 mm x 3 m (5/8" x 10') Copperclad grounding electrode. When foundation is set in rock, install ground electrode in cable trench.

CONCRETE FOUNDATION

FILE NAME =	USER NAME = prestonne	DESIGNED -	REVISD -	STATE OF ILLINOIS DEPARTMENT OF TRANSPORTATION	LIGHT POLE FOUNDATION DETAILS	F.A.I. RTE.	SECTION	COUNTY	TOTAL SHEETS	SHEET NO.
ct:\pw_work\p\eidot\prestonne\dms67883\d676c35-ah-t:tspl.en.dgn	DRAWN -	REVISD -	64			DIST 8 ITS 2010-1	ST. CLAIR	34	10	
PLOT SCALE = 100.0000 / IN.	CHECKED -	REVISD -	CONTRACT NO. 76C36							
PLOT DATE = 3/14/2010	DATE -	REVISD -	FED. ROAD DIST. NO. ILLINOIS FED. AID PROJECT							