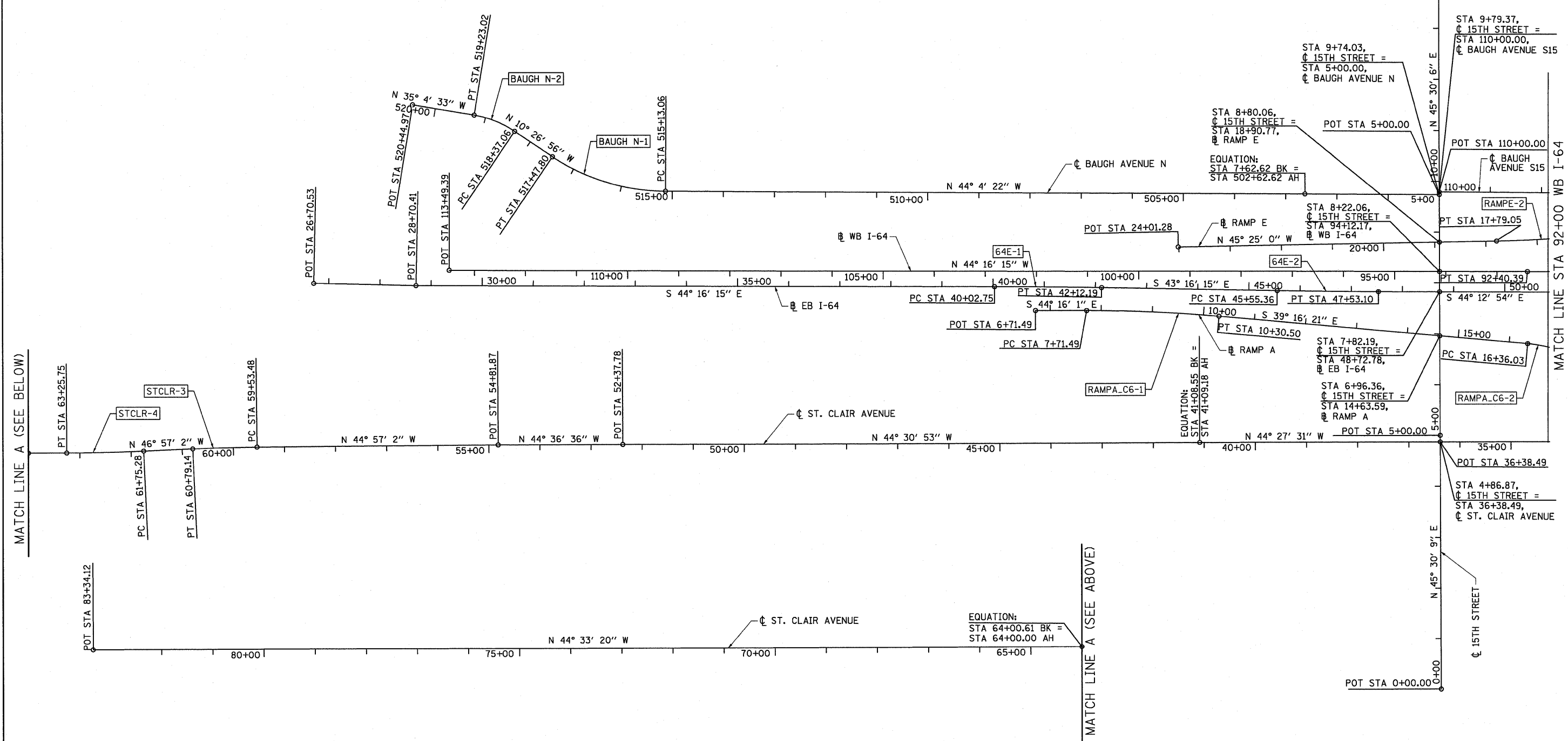
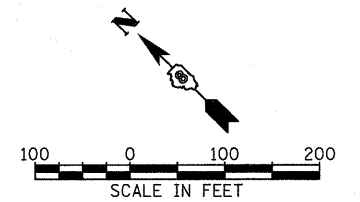


PR CURVE RAMPA_C6-1 PI STA. = 9+01.08 Δ = 4° 59' 40" (RT) D = 1° 55' 42" R = 2,971.21' T = 129.58' L = 259.00' E = 2.82' e = 5.0% T.R. REMOVAL = 0' S.E. RUN. REMOVAL = 42' PC STA = 7+71.49 PT STA = 10+30.50	PR CURVE RAMPA_C6-2 PI STA. = 18+21.27 Δ = 67° 55' 49" (RT) D = 20° 50' 05" R = 275.00' T = 185.25' L = 326.04' E = 56.57' e = 7.9% T.R. ATTAINMENT = 0' S.E. RUN. ATTAINMENT = 143' T.R. REMOVAL = 0' S.E. RUN. REMOVAL = 106' PC STA = 16+36.03 PT STA = 19+62.07	PR CURVE BAUGH_N-1 PI STA. = 516+33.92 Δ = 33° 37' 26" (RT) D = 14° 19' 26" R = 400.00' T = 120.86' L = 234.74' E = 17.86' PC STA = 515+13.06 PT STA = 517+47.80	PR CURVE BAUGH_N-2 PI STA. = 518+80.72 Δ = 24° 37' 37" (LT) D = 28° 38' 52" R = 200.00' T = 43.66' L = 85.96' E = 4.71' PC STA = 518+37.06 PT STA = 519+23.02	PR CURVE ST_CLR-3 PI STA. = 60+16.32 Δ = 2° 00' 00" (LT) D = 1° 35' 30" R = 3,600.00' T = 62.84' L = 125.66' E = 0.55' PC STA = 59+53.48 PT STA = 60+79.14	PR CURVE ST_CLR-4 PI STA. = 62+50.52 Δ = 2° 23' 42" (RT) D = 1° 35' 30" R = 3,600.00' T = 75.25' L = 150.47' E = 0.79' PC STA = 61+75.28 PT STA = 63+25.75	PR CURVE 64E-1 PI STA. = 41+07.48 Δ = 1° 00' 00" (RT) D = 0° 28' 39" R = 12,000.00' T = 104.72' L = 209.44' E = 0.46' PC STA = 40+02.75 PT STA = 42+12.19	PR CURVE 64E-2 PI STA. = 46+54.23 Δ = 0° 56' 39" (LT) D = 0° 28' 39" R = 12,000.00' T = 98.87' L = 197.74' E = 0.41' PC STA = 45+55.36 PT STA = 47+53.10	PR CURVE RAMPE-2 PI STA. = 17+13.80 Δ = 3° 44' 23" (RT) D = 2° 51' 53" R = 2,000.00' T = 65.29' L = 130.54' E = 1.07' e = 5.1% T.R. ATTAINMENT = 0' S.E. RUN. ATTAINMENT = 115' T.R. REMOVALS = 0' S.E. RUN. REMOVALS = 99' PC STA = 16+48.51 PT STA = 17+79.05
--	---	---	--	---	---	--	---	---



FILE NAME = #FILE#	USER NAME = IDOT	DESIGNED - TTB	REVISED -	<b>STATE OF ILLINOIS DEPARTMENT OF TRANSPORTATION</b>	<b>ALIGNMENT, TIES AND BENCHMARKS</b>		F.A.I. RTE. = 64	SECTION = 82-1-2HB	COUNTY = ST. CLAIR	TOTAL SHEETS = 345	SHEET NO. = 37
	PLOT SCALE = 100.0000' / IN.	DRAWN - TTB	REVISED -				FED. ROAD DIST. NO. = ILLINOIS FED. AID PROJECT				
	PLOT DATE = 3/17/2010	CHECKED - JAH	REVISED -				CONTRACT NO. 76C49				
	DATE = 3/19/2010	REVISED -		SCALE: 1"=100'	SHEET NO. 1 OF 8 SHEETS	STA. TO STA.					