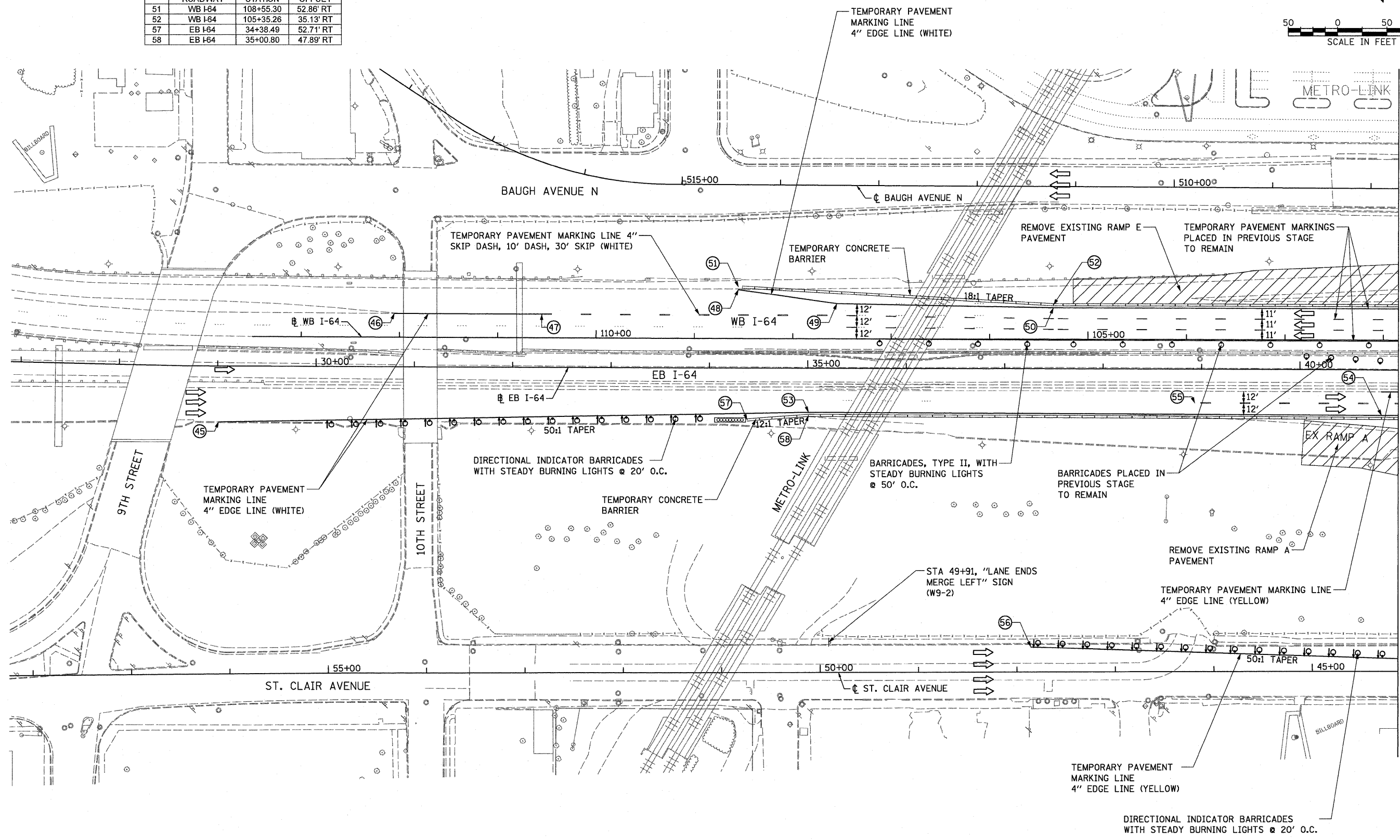
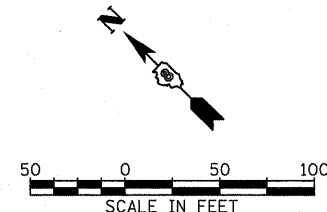


- NOTES:
- SEE SHEET 4 OF 4 FOR TEMPORARY PAVEMENT MARKING LAYOUT.
  - DETOUR SIGNS PLACED IN PREVIOUS STAGE TO REMAIN.
  - WARNING SIGNS PLACED ON WESTBOUND I-64 IN PREVIOUS STAGE TO REMAIN.

CONCRETE BARRIER LAYOUT			
ROADWAY	STATION	OFFSET	
WB I-64	108+55.30	52.86' RT	
WB I-64	105+35.26	35.13' RT	
EB I-64	34+38.49	52.71' RT	
EB I-64	35+00.80	47.89' RT	



MATCH LINE STA 41+00 EB I-64

FILE NAME =	USER NAME = IDOT	DESIGNED - TTB	REVISED -
*FILE#		DRAWN - TTB	REVISED -
	PLOT SCALE = 50.0000' / IN.	CHECKED - JAH	REVISED -
	PLOT DATE = 3/17/2010	DATE - 3/19/2010	REVISED -

**STATE OF ILLINOIS  
DEPARTMENT OF TRANSPORTATION**

**SUGGESTED STAGES OF CONSTRUCTION AND  
TRAFFIC CONTROL - STAGE 2**

SCALE: 1" = 50'    SHEET NO. 1 OF 4 SHEETS    STA. 27+00    TO STA. 41+00

F.A.I. RTE.	SECTION	COUNTY	TOTAL SHEETS	SHEET NO.
64	82-1-2HB	ST. CLAIR	345	80
FED. ROAD DIST. NO. ILLINOIS FED. AID PROJECT			CONTRACT NO. 76C49	