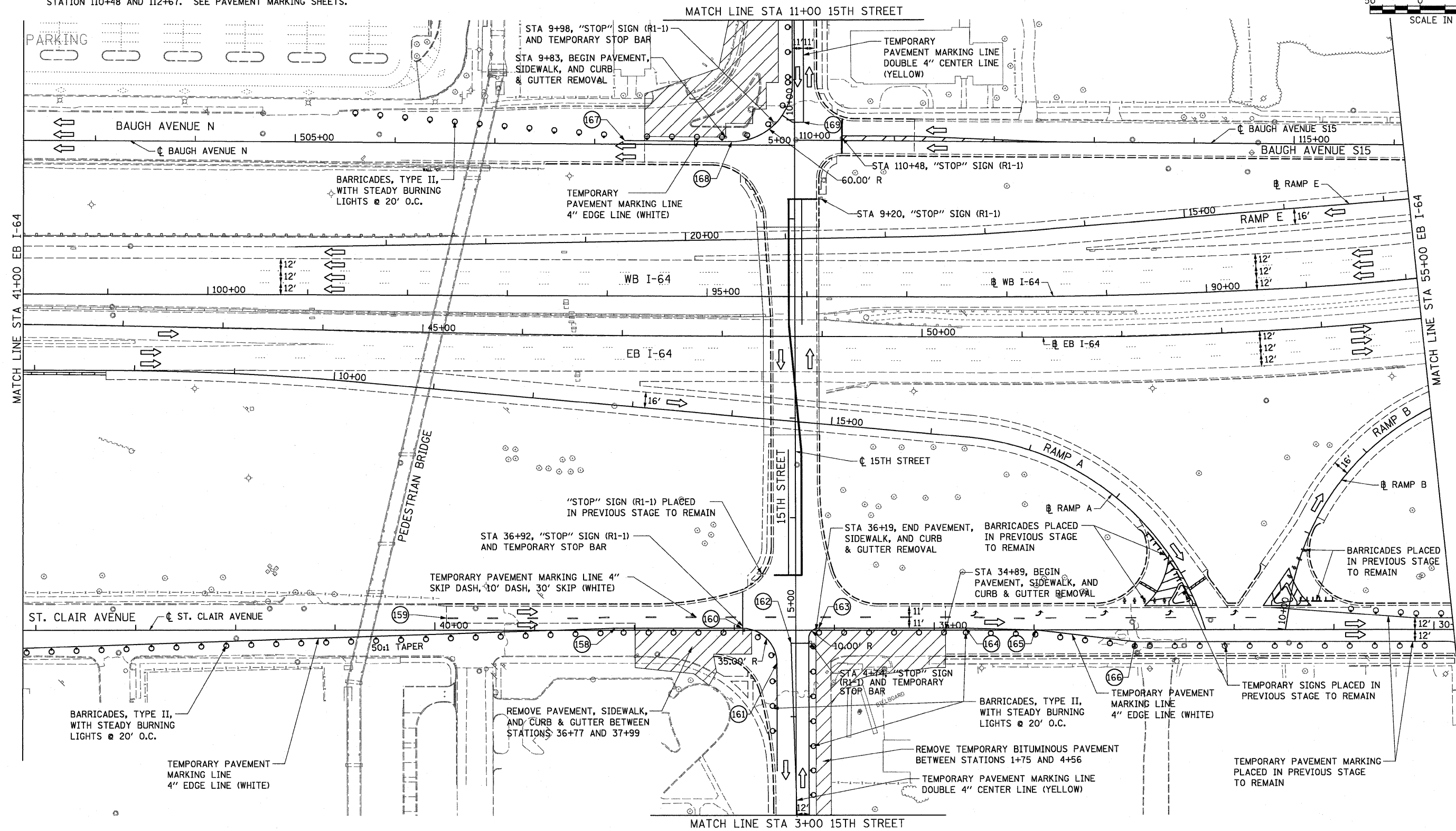
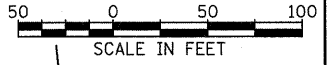


NOTES:

1. SEE SHEET 4 OF 4 FOR TEMPORARY PAVEMENT MARKING LAYOUT.
2. PRIOR TO STAGE 5A, PERMANENT CENTER LINE AND EDGE LINE PAVEMENT MARKINGS TO BE PLACED ON 15TH STREET BETWEEN STATION 5+42 AND 9+20. SEE PAVEMENT MARKING SHEETS.
3. PRIOR TO STAGE 5A, PERMANENT CENTER LINE AND EDGE LINE PAVEMENT MARKINGS TO BE PLACED ON BAUGH AVENUE BETWEEN STATION 110+48 AND 112+67. SEE PAVEMENT MARKING SHEETS.



FILE NAME = #FILE#	USER NAME = IDOT	DESIGNED - TTB	REVISED -	STATE OF ILLINOIS DEPARTMENT OF TRANSPORTATION	SUGGESTED STAGES OF CONSTRUCTION AND TRAFFIC CONTROL - STAGE 5A		F.A.I. RTE. 64	SECTION 82-1-2HB	COUNTY ST. CLAIR	TOTAL SHEETS 345	SHEET NO. 93
	PLOT SCALE = 50,0000' / IN.	DRAWN - TTB	REVISED -				CONTRACT NO. 76C49				
PLOT DATE = 3/17/2010	CHECKED - JAH	DATE - 3/19/2010	REVISED -	SCALE: 1" = 50'		SHEET NO. 2 OF 4 SHEETS		STA. 41+00 TO STA. 55+00		FED. ROAD DIST. NO. [ILLINOIS] FED. AID PROJECT	