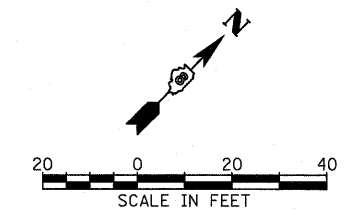
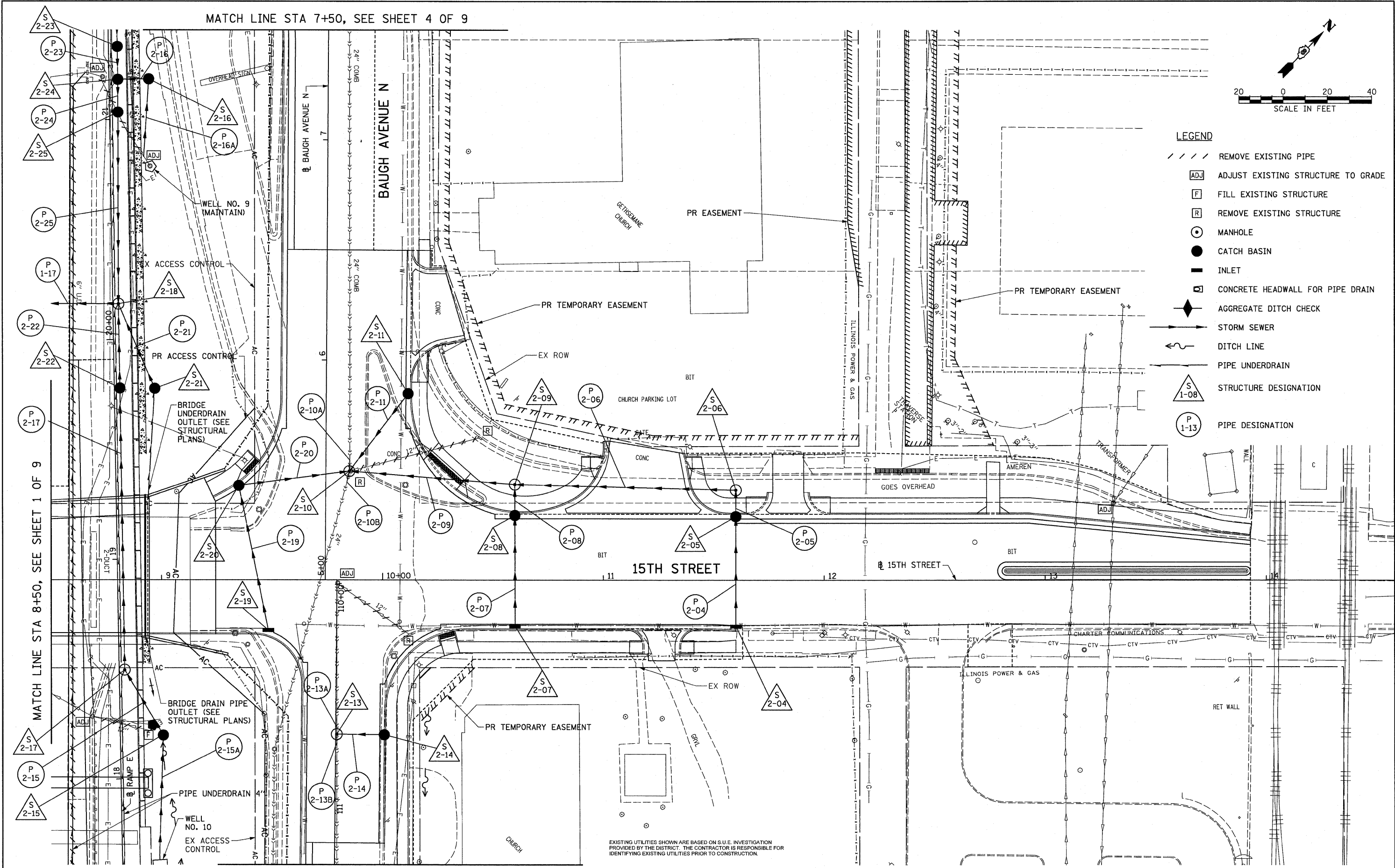


MATCH LINE STA 7+50, SEE SHEET 4 OF 9



- LEGEND**
- REMOVE EXISTING PIPE
  - ADJ ADJUST EXISTING STRUCTURE TO GRADE
  - F FILL EXISTING STRUCTURE
  - R REMOVE EXISTING STRUCTURE
  - MANHOLE
  - CATCH BASIN
  - INLET
  - ▣ CONCRETE HEADWALL FOR PIPE DRAIN
  - ◆ AGGREGATE DITCH CHECK
  - STORM SEWER
  - ~ DITCH LINE
  - PIPE UNDERDRAIN
  - △ S 1-08 STRUCTURE DESIGNATION
  - P 1-13 PIPE DESIGNATION



EXISTING UTILITIES SHOWN ARE BASED ON S.U.E. INVESTIGATION PROVIDED BY THE DISTRICT. THE CONTRACTOR IS RESPONSIBLE FOR IDENTIFYING EXISTING UTILITIES PRIOR TO CONSTRUCTION.

MATCH LINE STA 8+50, SEE SHEET 1 OF 9

MATCH LINE STA 111+30, SEE SHEET 3 OF 9

FILE NAME = #FILE#	USER NAME = IDOT	DESIGNED - TTB	REVISED -	<b>STATE OF ILLINOIS DEPARTMENT OF TRANSPORTATION</b>	<b>DRAINAGE AND UTILITY PLAN - 15TH STREET</b>		F.A.I. RTE. = 64	SECTION = 82-1-2HB	COUNTY = ST. CLAIR	TOTAL SHEETS = 345	SHEET NO. = 103			
	PLOT SCALE = 20.000' / IN.	DRAWN - TTB	REVISED -				SCALE: 1"=20'		SHEET NO. 2 OF 9 SHEETS		STA. TO STA.		FED. ROAD DIST. NO. = ILLINOIS	FED. AID PROJECT
	PLOT DATE = 3/18/2010	CHECKED - JAH	REVISED -										CONTRACT NO. 76C49	
	DATE = 3/19/2010	REVISED -												