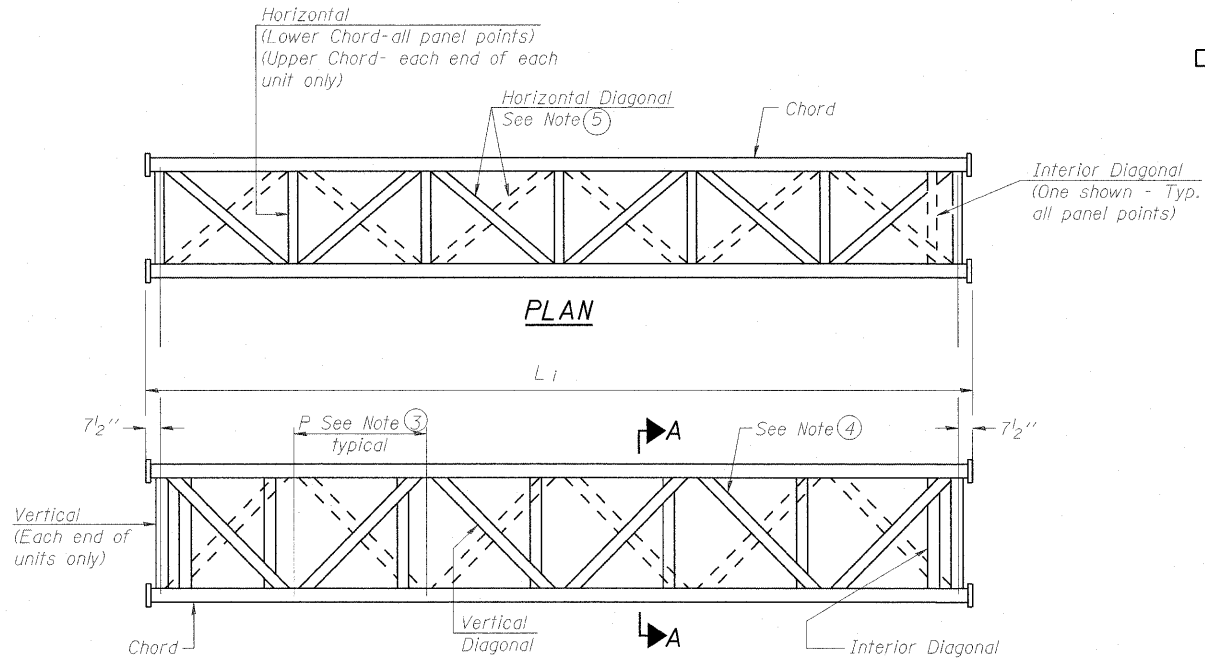
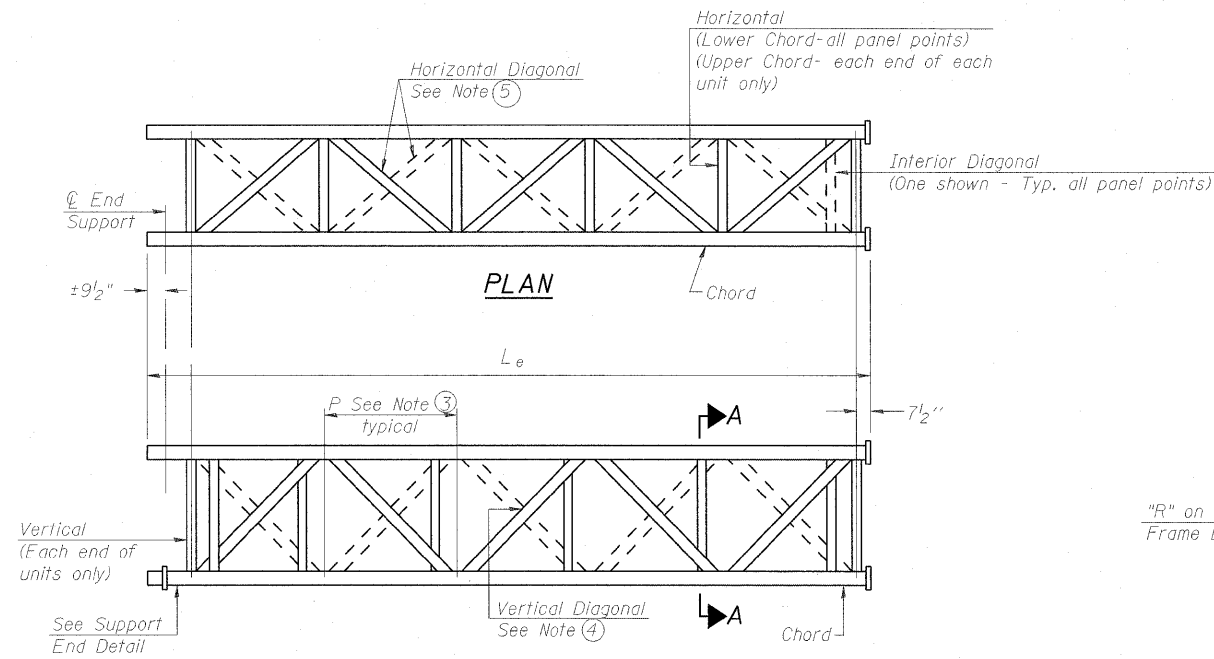


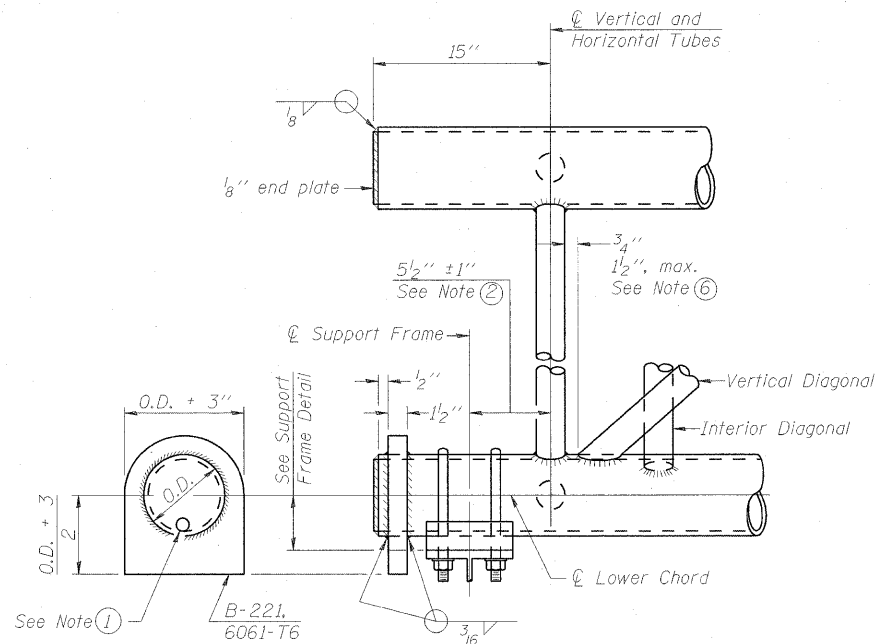
STATE OF ILLINOIS  
DEPARTMENT OF TRANSPORTATION



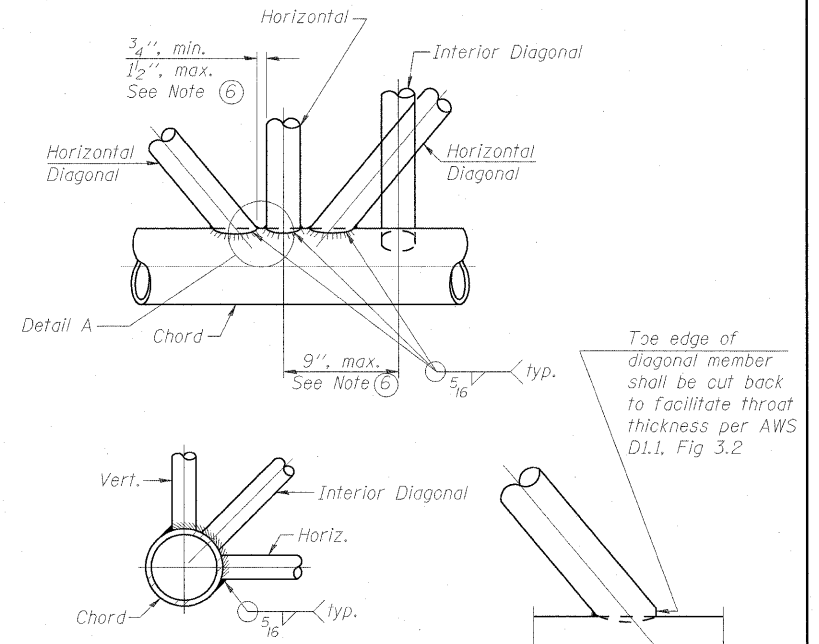
**ELEVATION  
TYPICAL INTERIOR UNIT**  
Even number of panels/interior unit required.



**ELEVATION  
TYPICAL EXTERIOR UNIT**  
Even or odd number of panels/exterior units allowed.

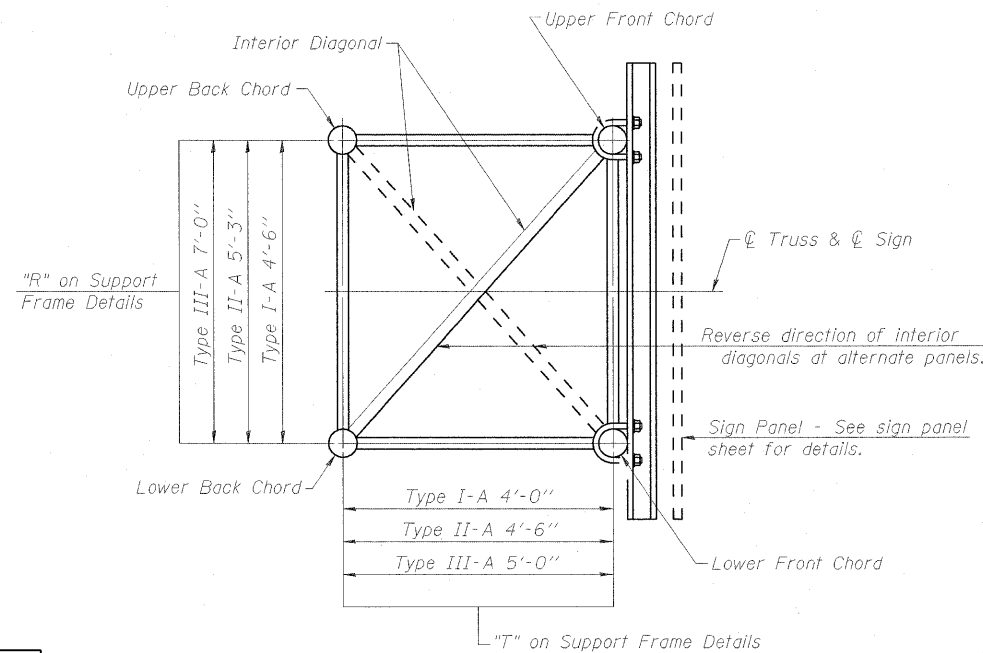


**SUPPORT END DETAIL FOR EXTERIOR UNIT**



**TYPICAL JOINT DETAILS**

**DETAIL A**



**SECTION A-A**

- ① Contractor may alternatively use standard aluminum drive-fit cap to close end. 1/2"  $\phi$  drain hole in end plate/drive-fit cap. (Typ. at ends of all chords)
- ② 5 1/2" end dimension may vary by  $\pm 1"$  to provide uniform panel spacing (P).
- ③ Panel spacing (P) shall be uniform for entire truss and between 4'-0" and 5'-0" for Type I-A or 4'-0" and 5'-6" for Types II-A and III-A.
- ④ Vertical Diagonals in front and back face shall alternate.
- ⑤ Hidden lines show wind bracing alternates direction between planes of top and bottom chords.
- ⑥ All diagonals shall be detailed for minimum offset from the panel point based on the following: Offset shall be such as to provide a 3/4" minimum to 1 1/2" maximum clearance between any diagonal and any horizontal or vertical member, and to provide clearance for U-bolt connections of signs or walkway brackets.

DESIGNED TGF
CHECKED MPW
DRAWN TGF
CHECKED MPW

200
EXAMINED
PASSED

NUMBER	REVISION	DATE

OS-A-2 12-1-08

OVERHEAD SIGN STRUCTURES  
ALUMINUM TRUSS DETAILS  
FOR TRUSS TYPES I-A, II-A AND III-A

SHEET NO.	F.A. RTE.	SECTION	COUNTY	TOTAL SHEETS	SHEET NO.
	64	82-1-2HB	ST. CLAIR	345	156
SHEETS	CONTRACT NO. 76C49				
FED ROAD DIST. NO. ILLINOIS FED. AID PROJECT					