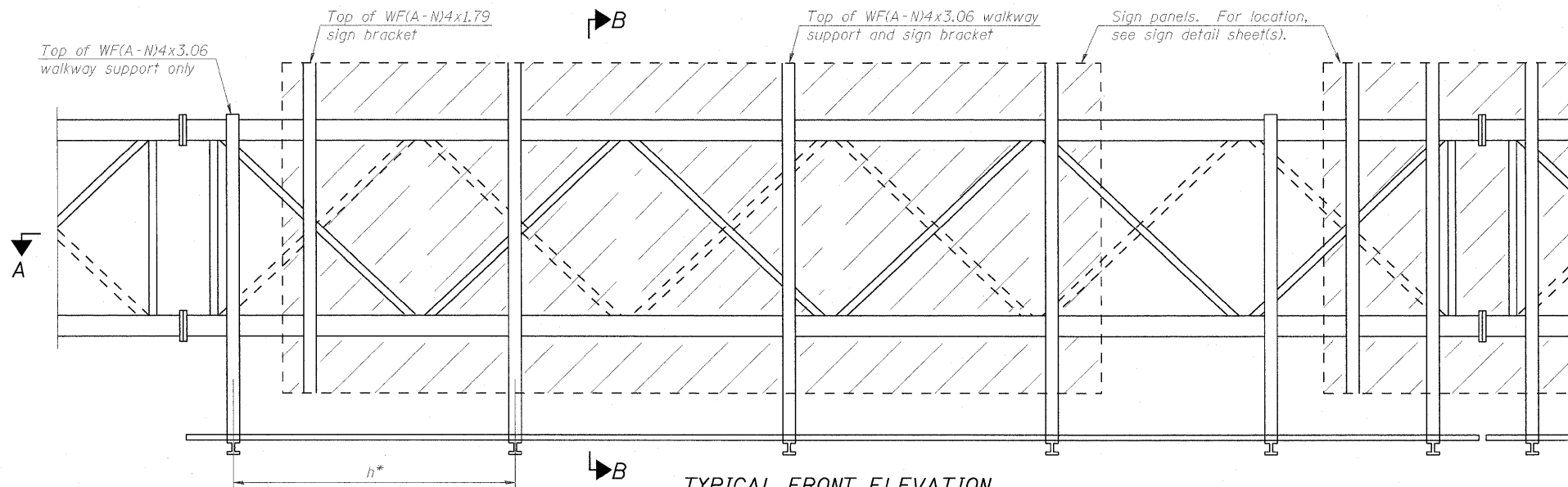
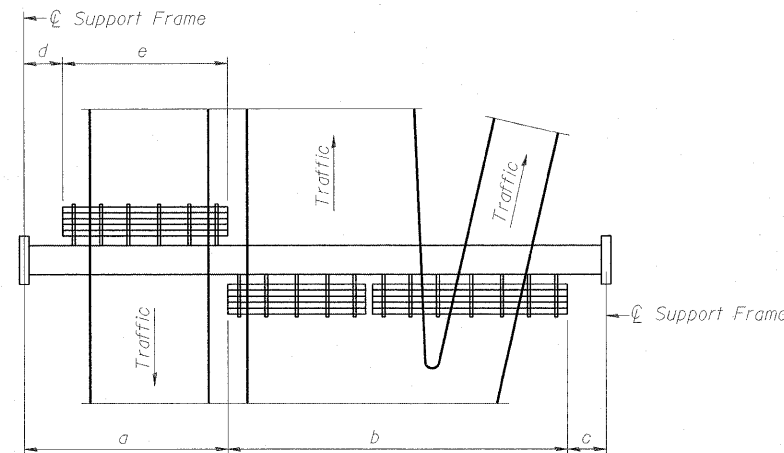


STATE OF ILLINOIS
DEPARTMENT OF TRANSPORTATION



TYPICAL FRONT ELEVATION

With lights and handrail omitted for clarity.
For Section B-B, see Base Sheet OS-A-10.

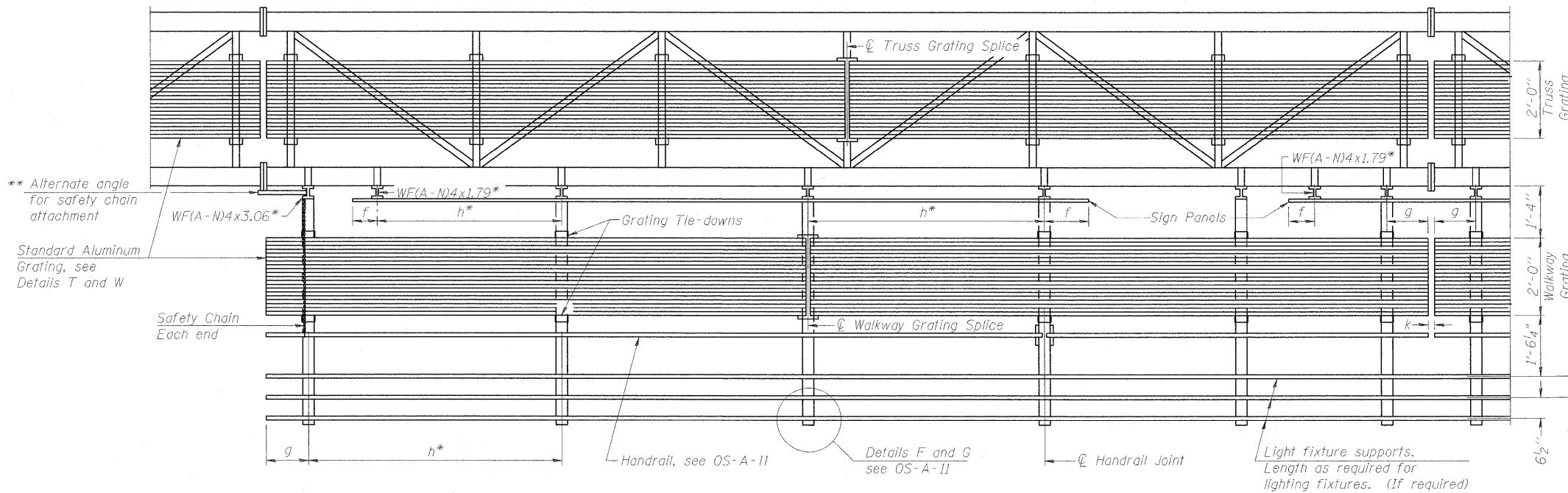


**PLAN
WALKWAY AND HANDRAIL SKETCH**
(Road plan beneath truss varies.)

BRACKET TABLE

Sign Width		Number Brackets Required
Greater Than	Less Than or Equal To	
	8'-0"	2
8'-0"	14'-0"	3
14'-0"	20'-0"	4
20'-0"	26'-0"	5
26'-0"	32'-0"	6

WF(A-N)4x1.79 or WF(A-N)4x3.06
ASTM B308, Alloy 6061-T6



SECTION A-A

Handrail and walkway shall span a minimum of three brackets between splices and/or gap joints.
Place all sign and walkway brackets as close to panel points as practical.
Handrail joints, grating, and light support splices placed as needed.

Truss grating to facilitate inspection shall run full length
(center to center of support frames) $\pm 12''$ on overhead trusses.
Cost of truss grating is included in "Overhead Sign Structure".

NUMBER	REVISION	DATE

Structure Number	Station	a	b	c	d	e	Walkway Grating and Handrail Lengths
ST CLAIR ST	34+75.00	42'-0"	23'-0"	8'-0"	19'-0"	20'-0"	47'-0"
85082164L003.4	93+20.00	20'-0"	60'-0"	6'-8 ⁵ / ₈ "	-	-	60'-0"

Walkway and Truss Grating width dimensions are nominal and may vary $\pm 1/2''$ based on available standard widths.

DESIGNED TGF	200
CHECKED MPW	EXAMINED
DRAWN TGF	ENGINEER OF BRIDGE DESIGN
CHECKED MPW	PASSED
	ENGINEER OF BRIDGES AND STRUCTURES

OS-A-9 12-1-08

**OVERHEAD SIGN STRUCTURES
ALUMINUM WALKWAY DETAILS**

SHEET NO. SHEETS	F.A. RTE. 64	SECTION 82-1-2HB	COUNTY ST. CLAIR	TOTAL SHEETS 345	SHEET NO. 163
	CONTRACT NO. 76C49				
FED ROAD DIST. NO. ILLINOIS FED. AID PROJECT					