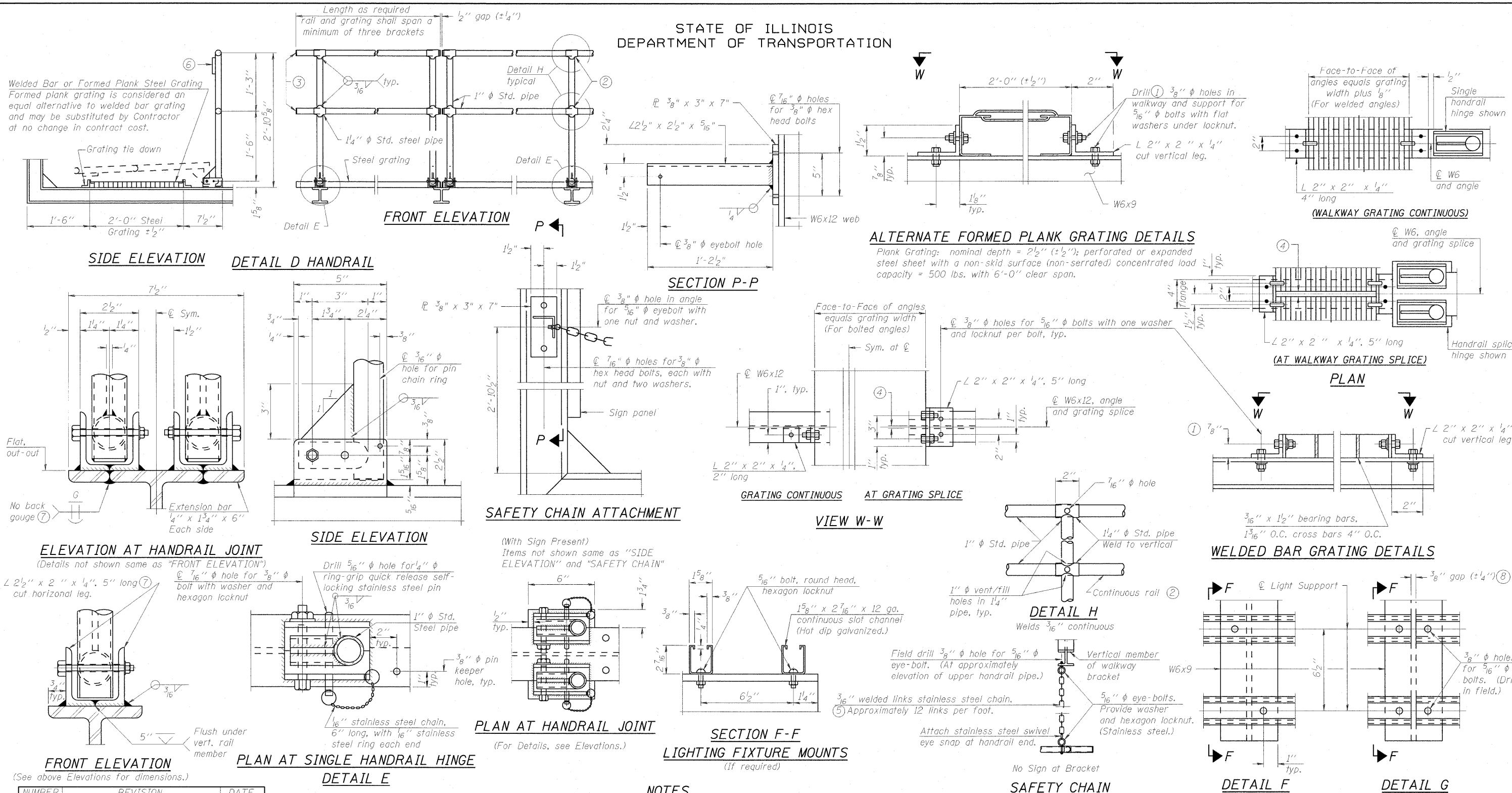


STATE OF ILLINOIS
DEPARTMENT OF TRANSPORTATION



NUMBER	REVISION	DATE

DESIGNED TGF	200
CHECKED MPW	EXAMINED
DRAWN TGF	PASSED
CHECKED MPW	ENGINEER OF BRIDGES AND STRUCTURES

BM-4 12-1-08

NOTES

- Drilling holes in grating may be done in shop or field, based on Contractor's preference and subject to accurate alignment. Field drilled holes must be touched up with galvanized paint.
- Horizontal rail member shall be continuous thru 1 1/4" φ pipe. Provide 1/6" φ hole in 1 1/4" φ pipe for 3/8" φ bolt. Field drill 1/6" φ hole in horizontal rail member. Provide washer and locknut for bolt. (Use 5/16" eyebolts in 1/6" φ holes on top rail at ends only.)
- Install standard force-fit end caps or weld 1/8" end plates with 1/8" c.f.w. and grind smooth. (All rail ends.)
- 3/8" (±1/4") gap between grating panels at splice.
- Chain to be type 304L stainless steel suitable for prolonged exterior exposure. Approximately 3'-6" long chain per location. Maximum sag with handrail erected = 4".
- 1/8" x 1/2" x 2" welded to handrail posts to protect locations that contact grating.
- Extrusions may be used in lieu of details shown, with approval by Engineer.
- Field cut ends of light support channels shall be free of burrs or hazardous projections and coated with zinc-rich primer or equivalent.

BRIDGE MOUNT SIGN STRUCTURES
WALKWAY DETAILS

SHEET NO. SHEETS	F.A. RTE.	SECTION	COUNTY	TOTAL SHEETS	SHEET NO.
	64	82-1-2HB	ST. CLAIR	345	180
CONTRACT NO. 76C49					
FED ROAD DIST. NO. ILLINOIS FED. AID PROJECT					