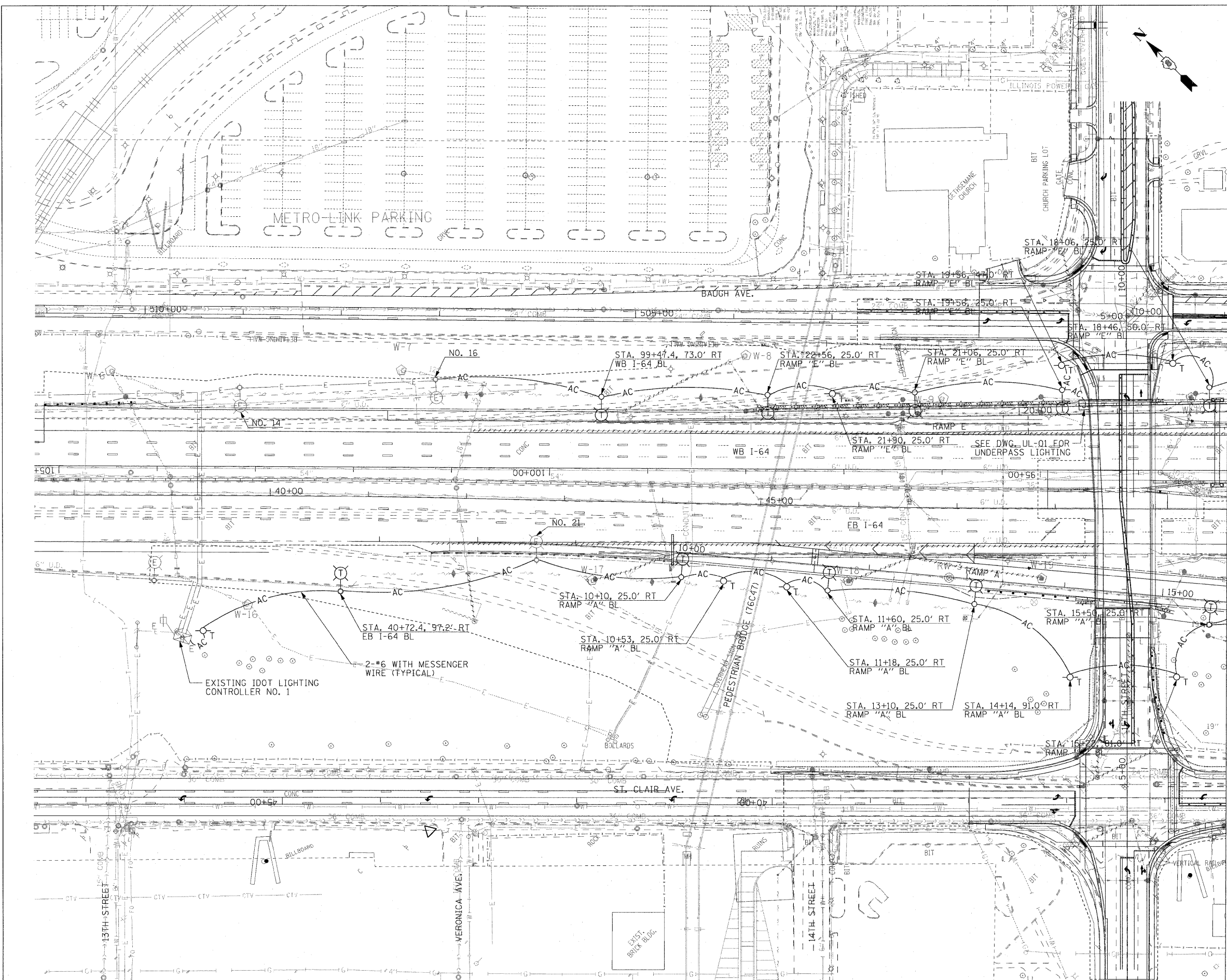
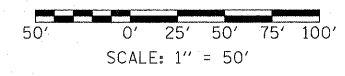


NOTES:

1. SEE DRAWING ME-01 FOR ELECTRICAL SYMBOLS AND ABBREVIATIONS.
2. SEE DRAWING ME-02 FOR LIGHTING DETAILS TEMPORARY POWER AND WOOD POLE DETAILS.
3. SEE IDOT STANDARD DETAIL LGTO14 FOR TEMPORARY ROADWAY LIGHTING DETAILS.
4. PROPOSED TEMPORARY WOOD POLES, LIGHTING UNITS, AND WIRING SHOWN ON THIS SHEET WILL REMAIN IN OPERATION AT THE END OF CONSTRUCTION SEQUENCE FOR THIS CONTRACT, AND WILL BECOME THE PROPERTY OF IDOT.
5. COORDINATE ALL WORK WITH CIVIL WORK, STRUCTURAL WORK, AND SUGGESTED STAGES OF CONSTRUCTION AND TRAFFIC CONTROL PLANS.



MATCH LINE STA. 49+75.00
SEE DRAWING RL-02



RL-01

FILE NAME =
#FILE#

USER NAME = jwntzt
PLOT SCALE = 50.0000 "/> IN.
PLOT DATE = 3/17/2010

DESIGNED	JSF	REVISED	-
DRAWN	JSF	REVISED	-
CHECKED	JPC	REVISED	-
DATE	03/19/10	REVISED	-

**STATE OF ILLINOIS
DEPARTMENT OF TRANSPORTATION**

**LIGHTING PLANS
PROPOSED WORK**

SCALE: 1"=50' SHEET NO. 1 OF 2 SHEETS STA. 37+60.00 TO STA. 49+75.00

F.A.I. RTE.	SECTION	COUNTY	TOTAL SHEETS	SHEET NO.
64	82-1-2HB	ST. CLAIR	345	196
FED. ROAD DIST. NO.			ILLINOIS FED. AID PROJECT	
			CONTRACT NO. 76C49	