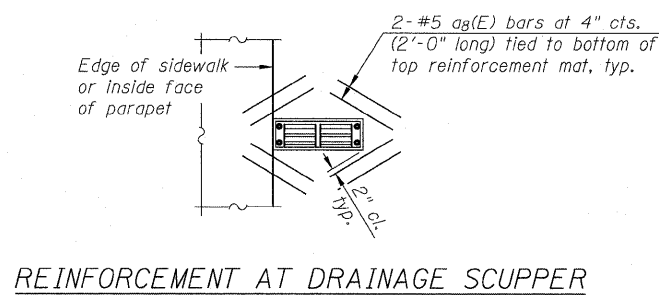
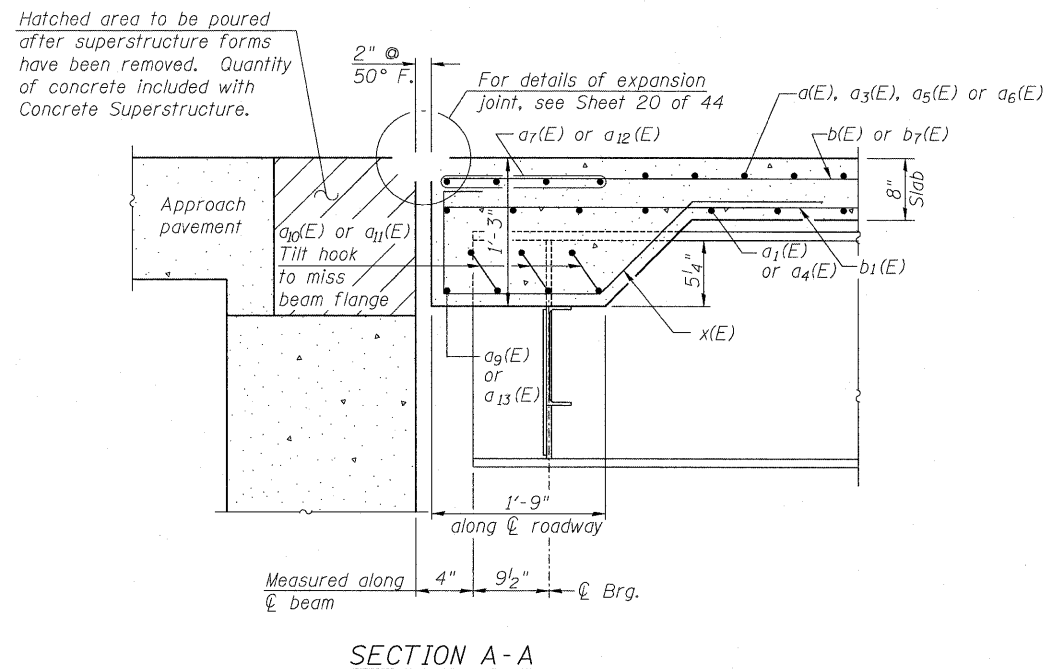
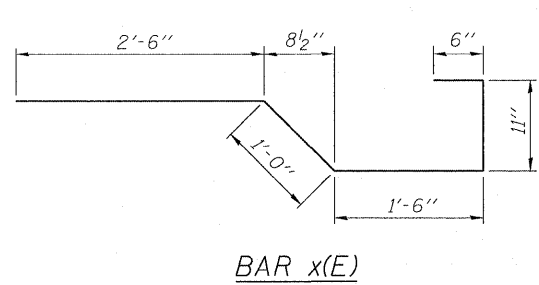
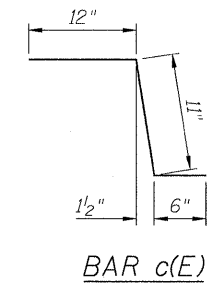
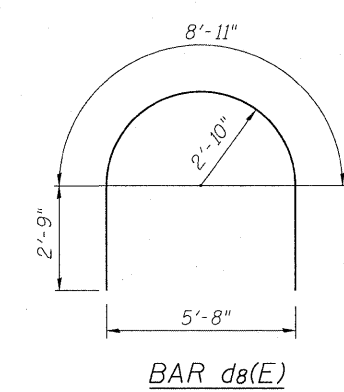
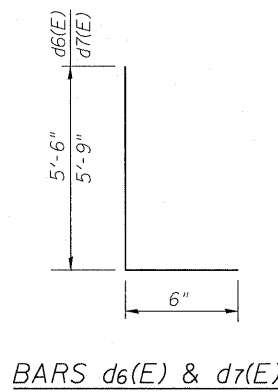
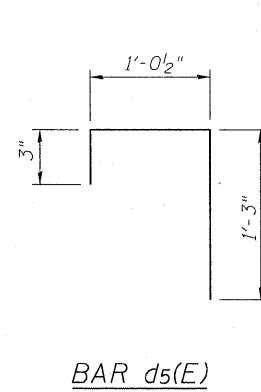
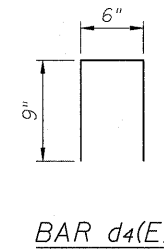
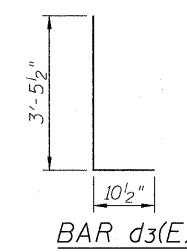
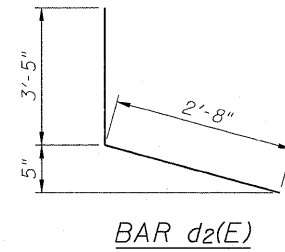
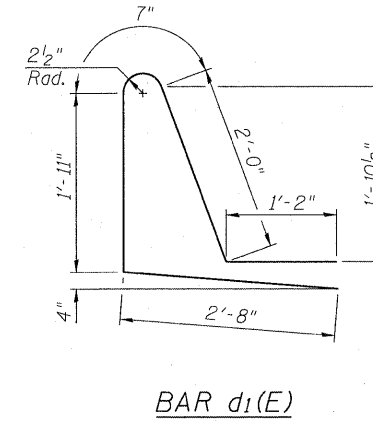
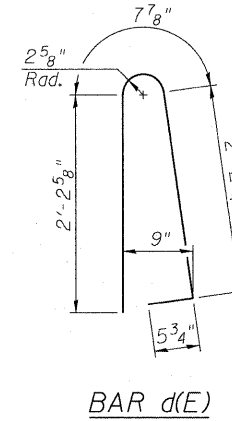
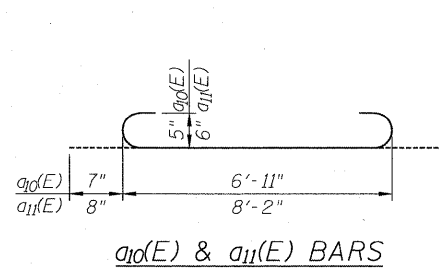
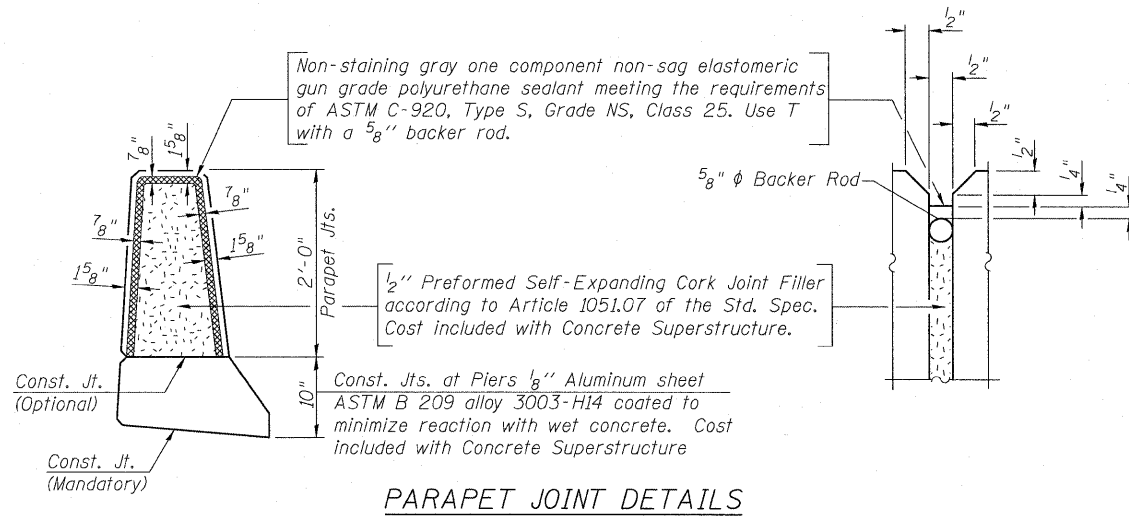


STATE OF ILLINOIS
DEPARTMENT OF TRANSPORTATION

SUPERSTRUCTURE
BILL OF MATERIAL



Bar	No.	Size	Length	Shape
a(E)	231	#5	34'-1"	—
a1(E)	437	#5	29'-10"	—
a2(E)	508	#6	6'-0"	—
a3(E)	277	#5	34'-1"	—
a4(E)	163	#5	35'-10"	—
a5(E)	231	#5	25'-7"	—
a6(E)	277	#5	31'-7"	—
a7(E)	8	#6	30'-3"	—
a8(E)	32	#5	2'-0"	—
a9(E)	2	#6	30'-3"	—
a10(E)	6	#5	8'-1"	()
a11(E)	33	#6	9'-6"	()
a12(E)	8	#6	33'-3"	—
a13(E)	2	#6	33'-3"	—
b(E)	434	#5	32'-0"	—
b1(E)	444	#5	28'-4"	—
b3(E)	20	#5	26'-0"	—
b4(E)	12	#5	32'-2"	—
b5(E)	14	#5	31'-6"	—
b6(E)	177	#6	27'-6"	—
b7(E)	14	#5	29'-2"	—
b8(E)	80	#5	28'-4"	—
c(E)	212	#5	2'-5"	—
c1(E)	212	#5	8'-3"	—
d(E)	231	#5	5'-7"	—
d1(E)	231	#5	8'-4"	—
d2(E)	212	#4	6'-1"	—
d3(E)	212	#6	4'-4"	—
d4(E)	92	#4	2'-0"	—
d5(E)	40	#4	2'-7"	—
d6(E)	10	#5	6'-0"	—
d7(E)	10	#5	6'-3"	—
d8(E)	6	#5	14'-5"	—
e(E)	28	#4	17'-6"	—
e1(E)	35	#4	19'-8"	—
e2(E)	2	#8	16'-8"	—
e3(E)	2	#4	16'-8"	—
e4(E)	40	#4	19'-8"	—
e5(E)	16	#4	16'-8"	—
e6(E)	32	#4	17'-7"	—
e7(E)	3	#4	24'-8"	—
e8(E)	3	#8	26'-1"	—
e9(E)	4	#4	26'-0"	—
e10(E)	4	#8	27'-6"	—
e11(E)	14	#4	16'-8"	—
e12(E)	29	#4	5'-8"	—
e13(E)	1	#8	5'-8"	—
x(E)	115	#5	6'-5"	—
Reinforcement Bars, Epoxy Coated	Pound	110,250		
Concrete Superstructure	Cu. Yds.	579.3		
Bridge Deck Grooving	Sq. Yd.	1,164		
Protective Coat	Sq. Yd.	1,530		

ZROKA engineering
Zoka Engineering, P.C.
4216 North Hermitage
Chicago, IL 60613

DESIGNED	LAS
CHECKED	JLA
DRAWN	SAW
CHECKED	LAS

3-31-2010

SUPERSTRUCTURE DETAILS 4
STRUCTURE NO. 082-0377

SHEET NO. 13 44 SHEETS	F.A.I. RTE.	SECTION	COUNTY	TOTAL SHEETS	SHEET NO.
	64	82-1-2HB	ST. CLAIR	345	220
			CONTRACT NO. 76C49		
ILLINOIS FED. AID PROJECT					

Revised 4/15/2010