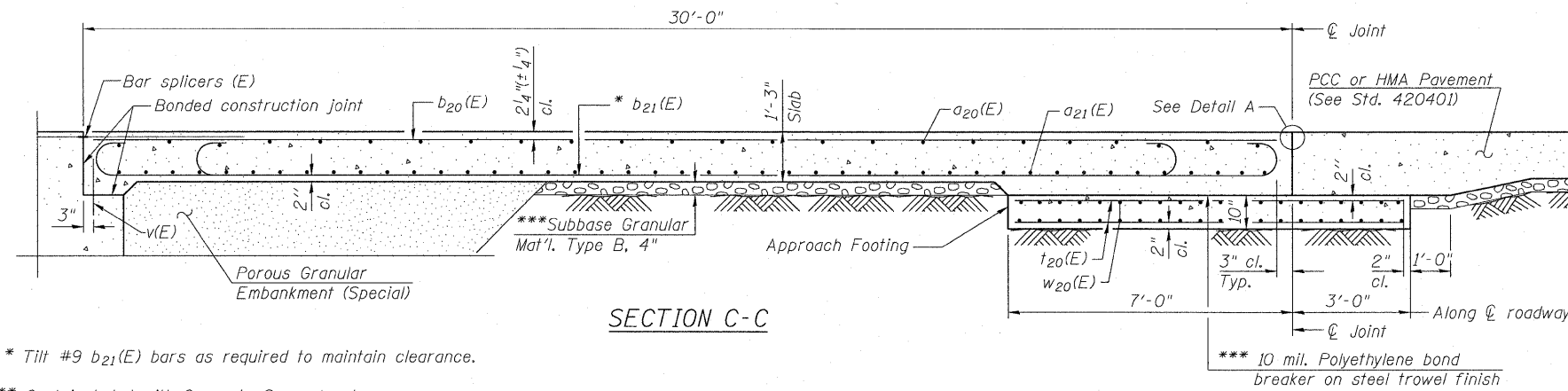


STATE OF ILLINOIS
DEPARTMENT OF TRANSPORTATION

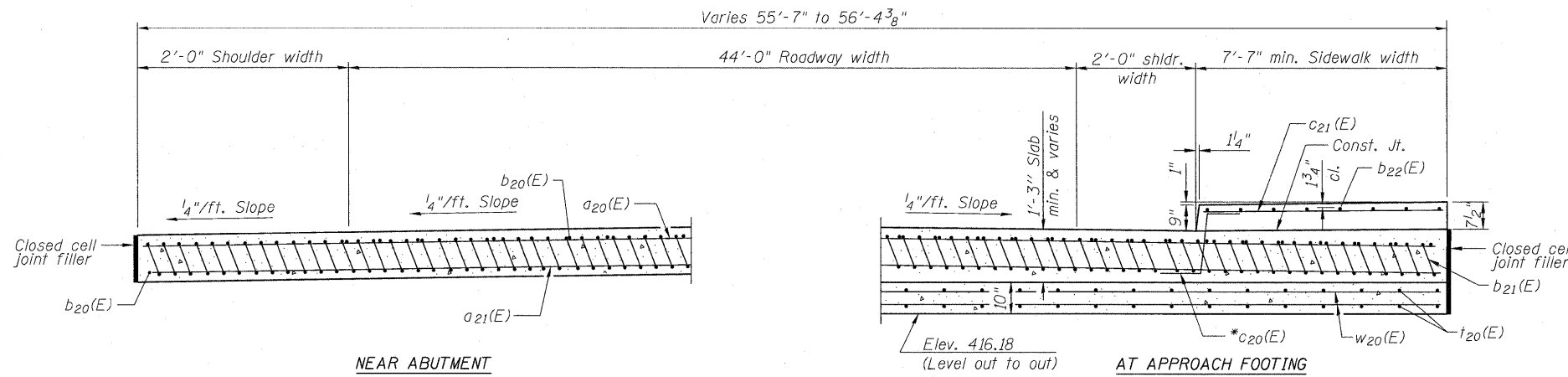
Notes:
See sheet 14 of 44 for Detail A.
Approach slab and parapet concrete shall be paid for as Concrete Superstructure.
Approach footing concrete shall be paid for as Concrete Structures.
Reinforcement shall be paid for as Reinforcement Bars, Epoxy Coated.
The approach footing maximum applied service bearing pressure (Qmax) = 2.0 ksf.
For bar splicer details, see sheet 39 of 44.
Cost of excavation for approach footing included with Concrete Structures.
For Porous Granular Embankment, Special and drainage treatment details, see sheet 37 of 44.



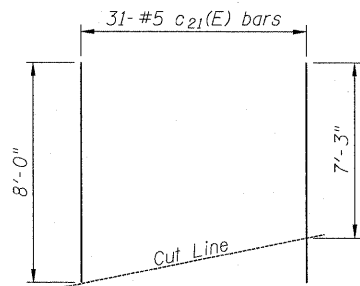
* Tilt #9 b₂₁(E) bars as required to maintain clearance.
*** Cost included with Concrete Superstructure.

**SOUTH APPROACH SLAB
BILL OF MATERIAL**

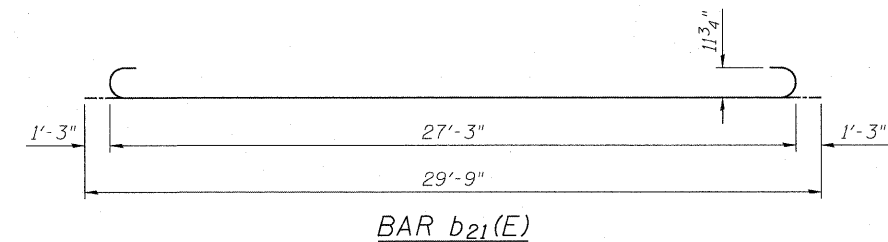
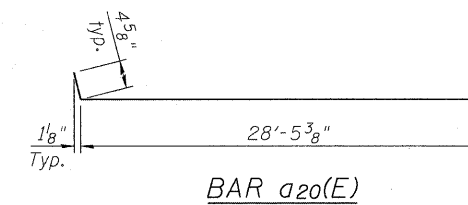
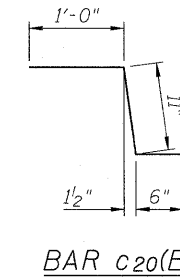
Bar	No.	Size	Length	Shape
a ₂₀ (E)	50	#4	28'-10"	—
a ₂₁ (E)	92	#5	29'-1"	—
b ₂₀ (E)	47	#4	29'-8"	—
b ₂₁ (E)	135	#9	29'-9"	—
b ₂₂ (E)	9	#5	29'-8"	—
c ₂₀ (E)	31	#5	2'-5"	—
c ₂₁ (E)	31	#5	8'-0"	—
t ₂₀ (E)	114	#4	9'-8"	—
w ₂₀ (E)	80	#5	29'-1"	—
Concrete Superstructure	Cu. Yd.		107.4	
Concrete Structures	Cu. Yd.		17.4	
Bridge Deck Grooving	Sq. Yd.		161	
Protective Coat	Sq. Yd.		189	
Reinforcement Bars, Epoxy Coated	Pound		22,120	



*In lieu of bottom leg, c₂₀(E) bars may be cored and set according to Article 509.06 of the Standard Specifications. Cored holes shall be roughened or scored per manufacturer's recommendations. Maximum depth of cored hole shall not exceed 6".



FIELD CUTTING DIAGRAM
Order c₂₁(E) bars full length. Cut as shown and discard remainder.



ZROKA engineering
Zroka Engineering, P.C.
4216 North Hermitage
Chicago, IL 60613

DESIGNED	LAS
CHECKED	JLA
DRAWN	SAW
CHECKED	LAS

3-31-2010

**SOUTH BRIDGE APPROACH SLAB DETAILS 2
STRUCTURE NO. 082-0377**

SHEET NO. 15 44 SHEETS	F.A.I. RTE. 64	SECTION 82-1-2HB	COUNTY ST. CLAIR	TOTAL SHEETS 345	SHEET NO. 222
	ILLINOIS FED. AID PROJECT			CONTRACT NO. 76C49	

Revised 4/15/2010