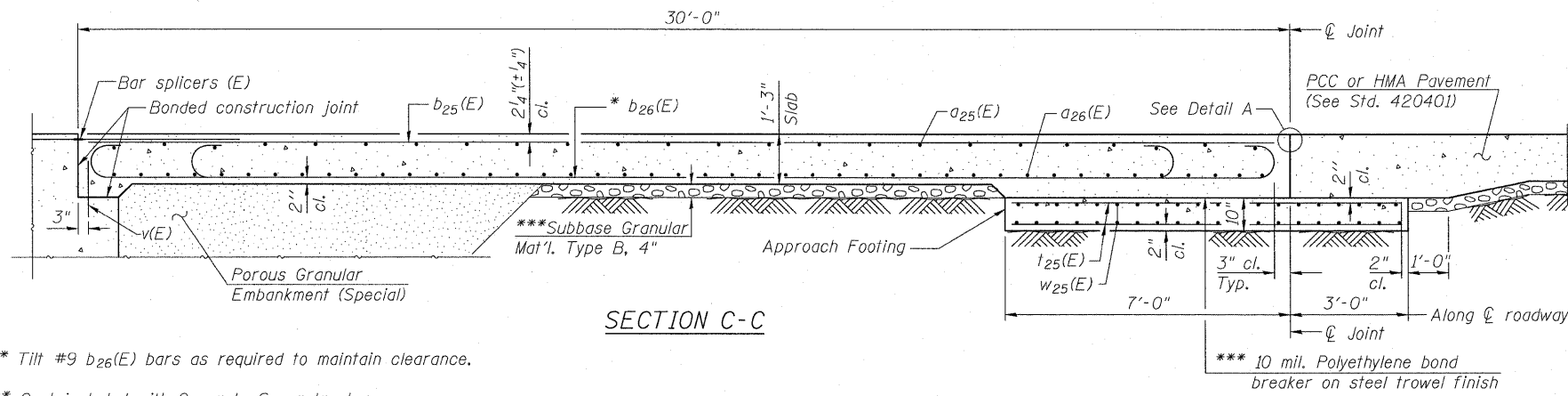


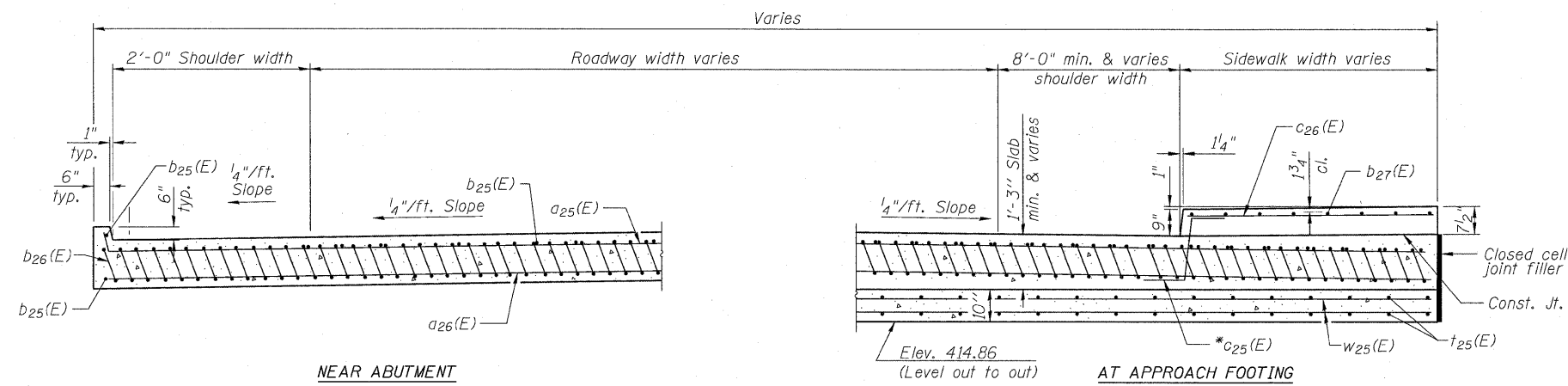
STATE OF ILLINOIS
DEPARTMENT OF TRANSPORTATION

Notes:
See sheet 16 of 44 for Detail A.
Approach slab and parapet concrete shall be paid for as Concrete Superstructure.
Approach footing concrete shall be paid for as Concrete Structures.
Reinforcement shall be paid for as Reinforcement Bars, Epoxy Coated.
The approach footing maximum applied service bearing pressure (Q_{max}) = 2.0 ksf.
For bar splicer details, see sheet 39 of 44.
Cost of excavation for approach footing included with Concrete Structures.
For Porous Granular Embankment, Special and drainage treatment details, see sheet 37 of 44.



SECTION C-C

* Tilt #9 b26(E) bars as required to maintain clearance.
*** Cost included with Concrete Superstructure.



NEAR ABUTMENT

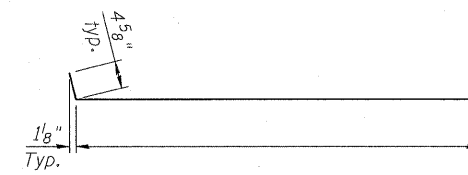
SECTION D-D

(See Plan for dimensions not shown)

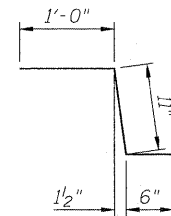
*In lieu of bottom leg, c25(E) bars may be cored and set according to Article 509.06 of the Standard Specifications. Cored holes shall be roughened or scored per manufacturer's recommendations. Maximum depth of cored hole shall not exceed 6".

NORTH APPROACH SLAB
BILL OF MATERIAL

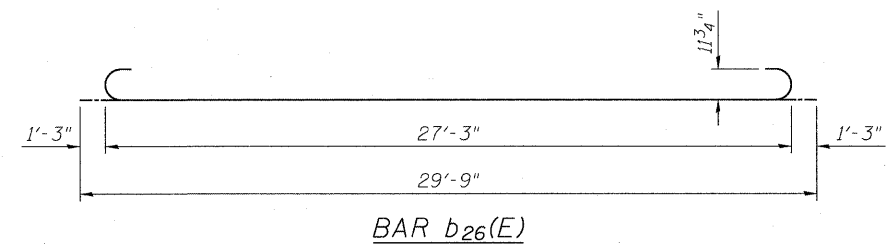
| Bar | No. | Size | Length | Shape |
|----------------------------------|-----|---------|--------|-------|
| a25(E) | 75 | #4 | 25'-4" | ┌ |
| a26(E) | 138 | #5 | 25'-9" | — |
| b25(E) | 52 | #4 | 29'-8" | — |
| b26(E) | 149 | #9 | 29'-9" | ┌ |
| b27(E) | 10 | #5 | 26'-0" | — |
| c25(E) | 31 | #5 | 2'-5" | ┌ |
| c26(E) | 31 | #5 | 9'-5" | — |
| t25(E) | 150 | #4 | 9'-8" | — |
| w25(E) | 120 | #5 | 25'-9" | — |
| Concrete Superstructure | | Cu. Yd. | 139.1 | |
| Concrete Structures | | Cu. Yd. | 22.0 | |
| Bridge Deck Grooving | | Sq. Yd. | 196 | |
| Protective Coat | | Sq. Yd. | 221 | |
| Reinforcement Bars, Epoxy Coated | | Pound | 25,920 | |



BAR a25(E)



BAR c25(E)



BAR b26(E)

NORTH BRIDGE APPROACH SLAB DETAILS 2
STRUCTURE NO. 082-0377

ZROKA engineering
Zroka Engineering, P.C.
4216 North Hermitage
Chicago, IL 60613

| | |
|----------|-----|
| DESIGNED | LAS |
| CHECKED | JLA |
| DRAWN | SAW |
| CHECKED | LAS |

3-31-2010

| | | | | | |
|---------------------------|-------------|----------|--------------------|--------------|-----------|
| SHEET NO. 17 | F.A.I. RTE. | SECTION | COUNTY | TOTAL SHEETS | SHEET NO. |
| 44 SHEETS | 64 | 82-1-2HB | ST. CLAIR | 345 | 224 |
| | | | CONTRACT NO. 76C49 | | |
| ILLINOIS FED. AID PROJECT | | | | | |

REVISED 4/15/2010