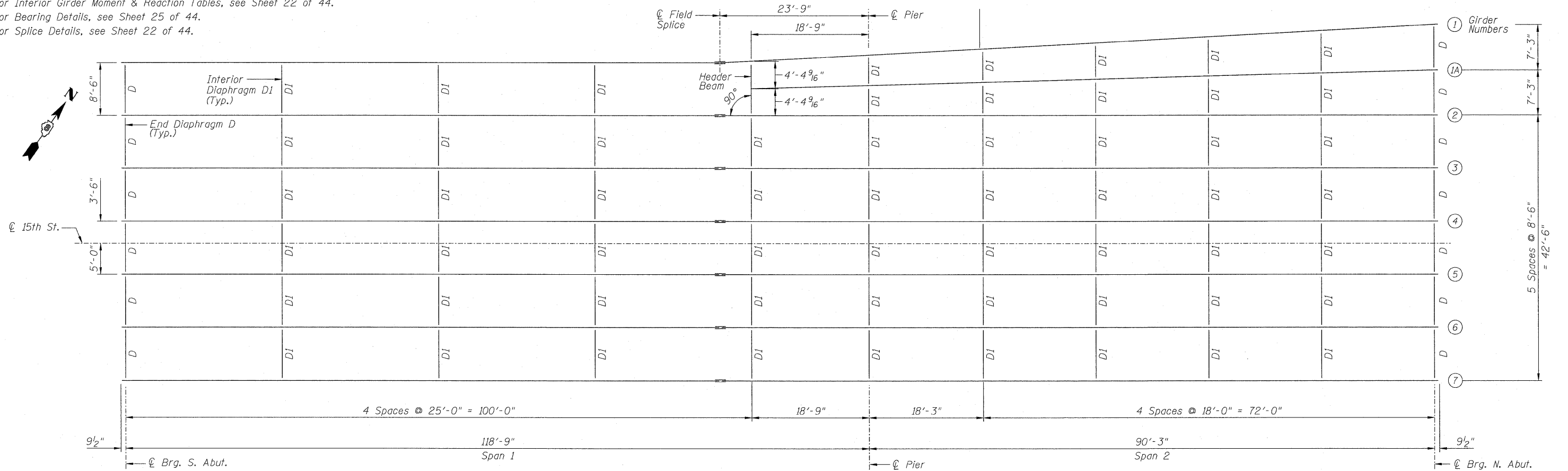
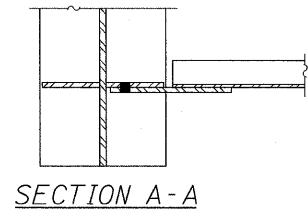


Notes:
 All dimensions are horizontal.
 Ends of girders, bearing stiffeners and connection plates shall be vertical.
 For Girder Details, see Sheet 23 of 44.
 For Interior Girder Moment & Reaction Tables, see Sheet 22 of 44.
 For Bearing Details, see Sheet 25 of 44.
 For Splice Details, see Sheet 22 of 44.

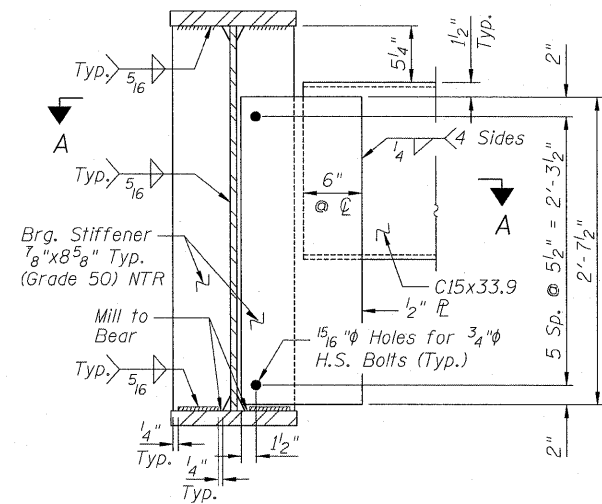
STATE OF ILLINOIS
 DEPARTMENT OF TRANSPORTATION



FRAMING PLAN



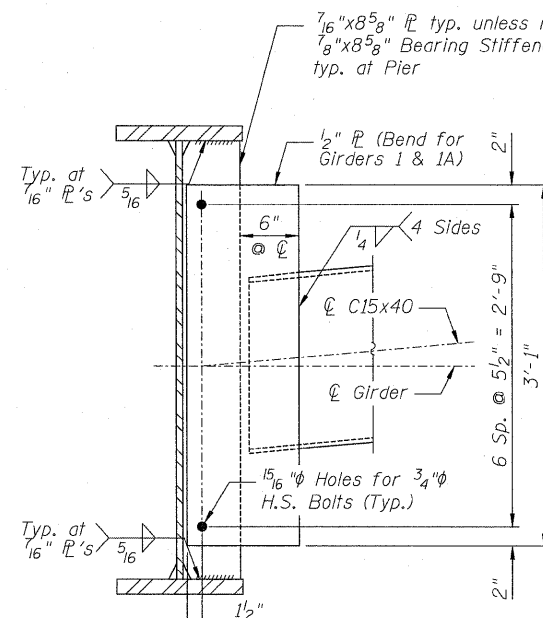
SECTION A-A



END DIAPHRAGM D

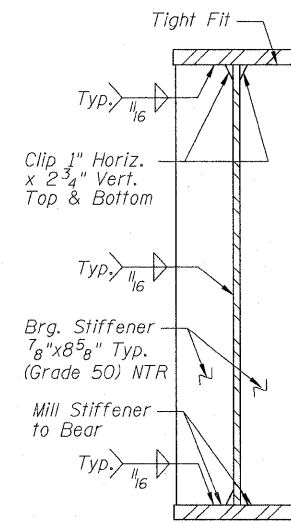
(13 Thus)

Note:
 Two hardened washers shall be required for each set of oversized holes.



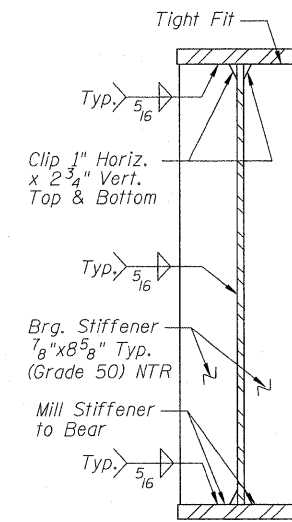
INTERIOR DIAPHRAGM D1

(58 Thus)

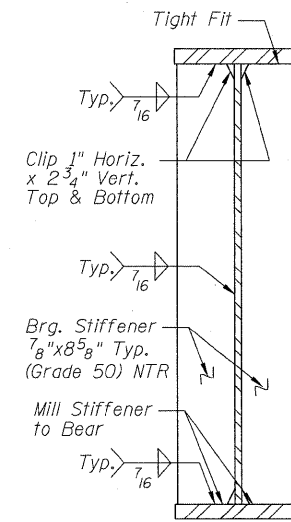


SECTION AT PIER

(All Girders Except Girder 1A)



SECTION AT ABUTMENT



SECTION AT PIER GIRDER 1A

Notes:

All cross frames or diaphragms shall be installed as steel is erected and secured with erection pins and bolts except as otherwise noted. Individual cross frames or diaphragms at supports may be temporarily disconnected to install bearing anchor rods.

Load carrying components designated "NTR" shall conform to the Supplemental Requirements for Notch Toughness, Zone 2.

ZROKA engineering
 Zroka Engineering, P.C.
 4216 North Hermitage
 Chicago, IL 60613

DESIGNED	LAS
CHECKED	JLA
DRAWN	SAW
CHECKED	LAS

3-31-2010

FRAMING PLAN
 STRUCTURE NO. 082-0377

SHEET NO. 21 44 SHEETS	F.A.I. RTE.	SECTION	COUNTY	TOTAL SHEETS	SHEET NO.
	64	82-1-2HB	ST. CLAIR	345	228
CONTRACT NO. 76C49					
ILLINOIS FED. AID PROJECT					

Revised 4/15/2010