

STATE OF ILLINOIS
DEPARTMENT OF TRANSPORTATION

SOUTH ABUTMENT & WINGWALLS BILL OF MATERIAL

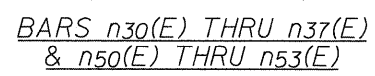
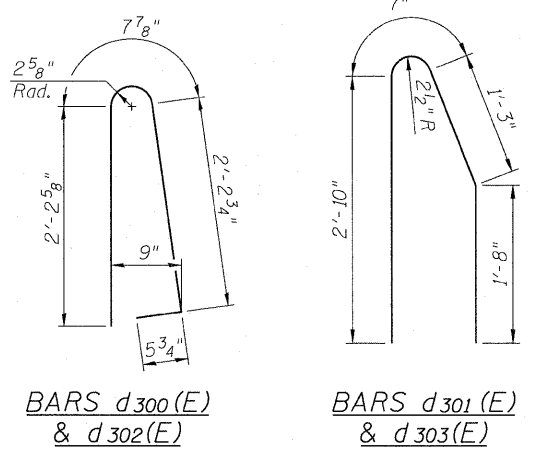
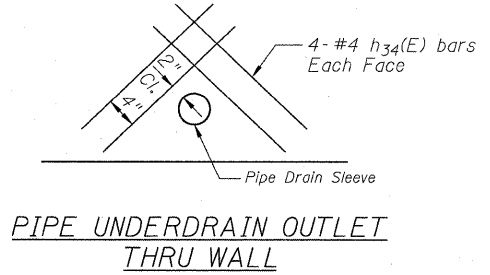
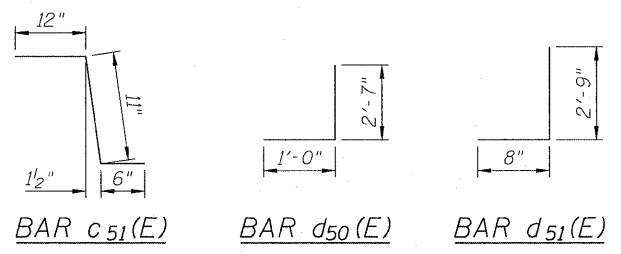
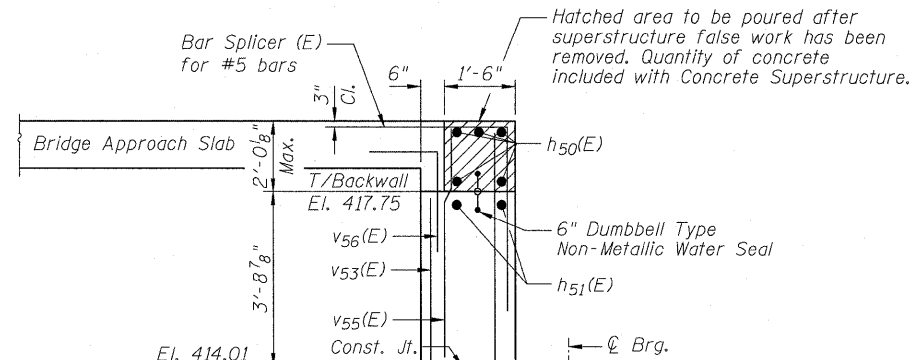
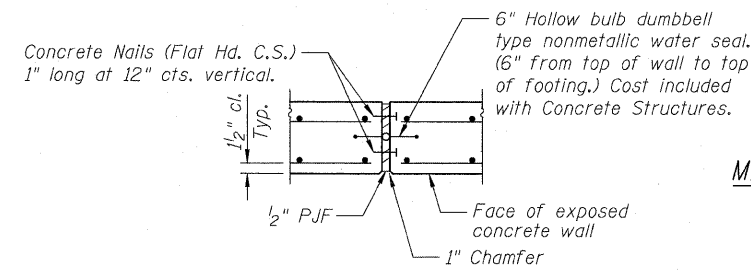
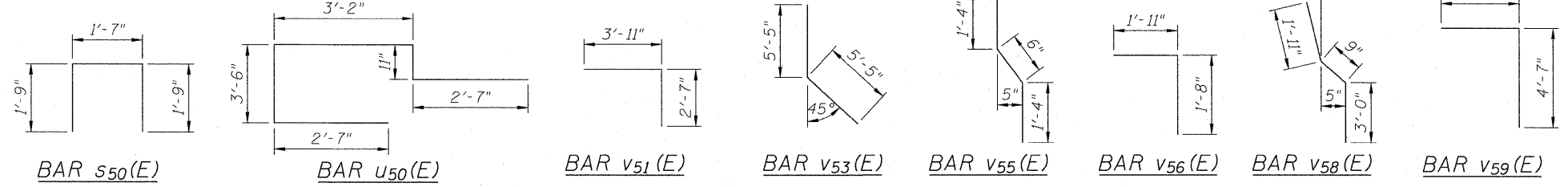
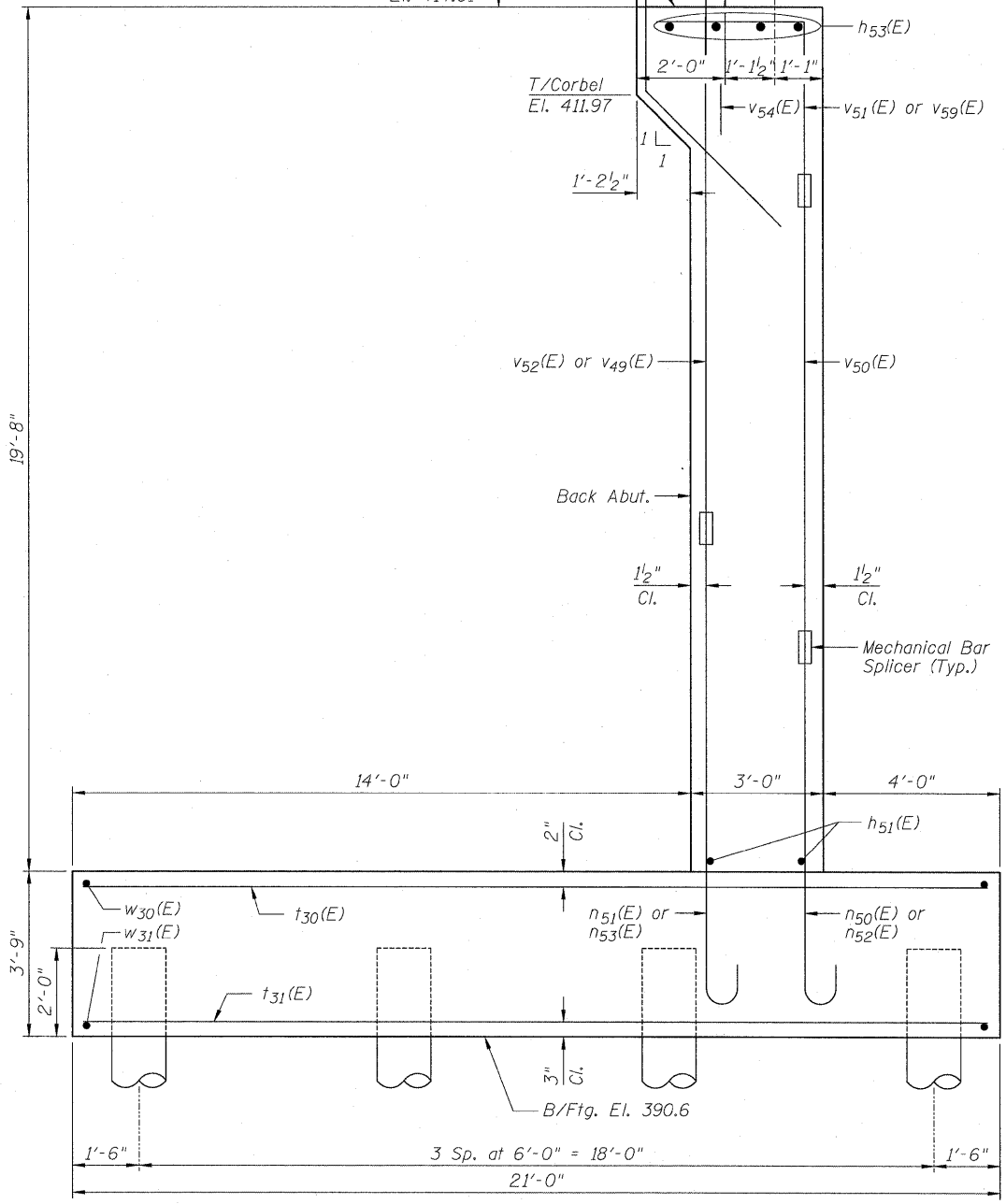


TABLE OF DIMENSIONS

Bar	A	B	C
n30(E)	6'-2"	8"	6"
n31(E)	11'-6"	1'-5"	1'-1 1/4"
n32(E)	6'-6"	8"	6"
n33(E)	5'-0"	7"	5"
n34(E)	12'-4"	1'-5"	1'-1 1/4"
n35(E)	6'-2"	8"	6"
n36(E)	6'-9"	8"	6"
n37(E)	5'-0"	7"	5"
n50(E)	8'-1"	8"	6"
n51(E)	10'-10"	1'-5"	1'-1 1/4"
n52(E)	6'-1"	8"	6"
n53(E)	12'-10"	1'-5"	1'-1 1/4"

Bar	No.	Size	Length	Shape
b50(E)	9	#5	1'-8"	—
c50(E)	3	#5	8'-3"	—
c51(E)	3	#5	2'-5"	—
d50(E)	3	#6	3'-7"	┘
d51(E)	3	#4	3'-5"	┘
d300(E)	26	#5	5'-7"	┘
d301(E)	26	#4	6'-4"	┘
d302(E)	15	#5	5'-7"	┘
d303(E)	15	#4	6'-4"	┘
d304(E)	14	#4	2'-0"	┘
d305(E)	14	#5	9'-2"	┘
d306(E)	24	#5	9'-2"	┘
e300(E)	7	#4	22'-8"	—
e301(E)	7	#4	12'-6"	—
e302(E)	1	#8	22'-8"	—
e303(E)	1	#4	22'-8"	—
e304(E)	1	#8	12'-6"	—
e305(E)	1	#4	12'-6"	—
e306(E)	8	#4	12'-2"	—
e307(E)	8	#4	23'-0"	—
h30(E)	52	#6	12'-6"	—
h31(E)	30	#5	22'-8"	—
h32(E)	54	#6	12'-2"	—
h33(E)	30	#5	23'-0"	—
h34(E)	8	#4	4'-0"	—
h50(E)	10	#6	30'-3"	—
h51(E)	100	#6	30'-3"	—
h52(E)	4	#4	25'-2"	—
h53(E)	8	#6	30'-3"	—
h54(E)	8	#4	1'-8"	—
h55(E)	6	#4	1'-8"	—
n30(E)	14	#6	6'-10"	┘
n31(E)	32	#10	12'-11"	┘
n32(E)	56	#6	7'-2"	┘
n33(E)	24	#5	5'-7"	┘
n34(E)	31	#10	13'-9"	┘
n35(E)	14	#6	6'-10"	┘
n36(E)	57	#6	7'-5"	┘
n37(E)	24	#5	5'-7"	┘
n50(E)	30	#6	8'-9"	┘
n51(E)	70	#10	12'-3"	┘
n52(E)	29	#6	6'-9"	┘
n53(E)	69	#10	14'-3"	┘
s50(E)	27	#4	5'-1"	┘
t30(E)	159	#8	20'-8"	—
t31(E)	161	#6	20'-8"	—
t32(E)	102	#7	14'-8"	—
t33(E)	108	#4	14'-8"	—
u50(E)	50	#6	12'-9"	┘
v30(E)	32	#7	20'-4"	—
v31(E)	14	#6	24'-6"	—
v32(E)	56	#5	12'-0"	—
v33(E)	24	#5	13'-4"	—
v34(E)	31	#7	20'-6"	—
v35(E)	14	#6	25'-4"	—
v36(E)	57	#5	12'-1"	—
v37(E)	24	#5	13'-6"	—
v49(E)	69	#10	10'-2"	—
v50(E)	59	#6	12'-3"	—
v51(E)	30	#6	6'-6"	┘
v52(E)	70	#10	12'-2"	—
v53(E)	70	#6	10'-10"	┘
v54(E)	59	#6	6'-6"	—
v55(E)	70	#4	3'-2"	┘
v56(E)	67	#5	3'-7"	┘
v57(E)	3	#6	5'-10"	—
v58(E)	3	#6	5'-8"	┘
v59(E)	29	#6	8'-6"	┘
w30(E)	150	#10	26'-9"	—
w31(E)	165	#5	23'-4"	—
w32(E)	60	#5	22'-8"	—
Structure Excavation		Cu. Yd.	2,288	
Concrete Structures		Cu. Yd.	521.9	
Reinforcement Bars, Epoxy Coated		Pound	82,220	
Furnishing Metal Shell Piles 14"x0.312"		Foot	5,079	
Driving Piles		Foot	5,079	
Test Pile Metal Shells		Each	1	
Mechanical Splicers		Each	257	
Bar Splicers		Each	56	
Protective Coat		Sq. Yd.	29	
Concrete Sealer		Sq. Ft.	1,504	
Porous Granular Embankment, Special		Cu. Yd.	332	



MIN. BAR LAPS
#5 bar = 2'-2"
#6 bar = 2'-7"
#9 bar = 5'-9"
#10 bar = 7'-3"

SOUTH ABUTMENT DETAILS
STRUCTURE NO. 082-0377

ZROKA Engineering, P.C.
4216 North Hermitage
Chicago, IL 60613

DESIGNED	LAS
CHECKED	JLA
DRAWN	SAW
CHECKED	LAS

3-31-2010

SHEET NO. 30 44 SHEETS	F.A.I. RTE. 64	SECTION 82-1-2HB	COUNTY ST. CLAIR	TOTAL SHEETS 345	SHEET NO. 237
	CONTRACT NO. 76C49				

ILLINOIS FED. AID PROJECT
Revised 4/15/2010